



MERRYWEATHER PLACE, SE10

£1,750 per month

Modern apartment
One bedroom
Third floor
Gated development
Great location
Energy rating: b

@marshandparsons
marshandparsons.co.uk

MARSH &
PARSONS



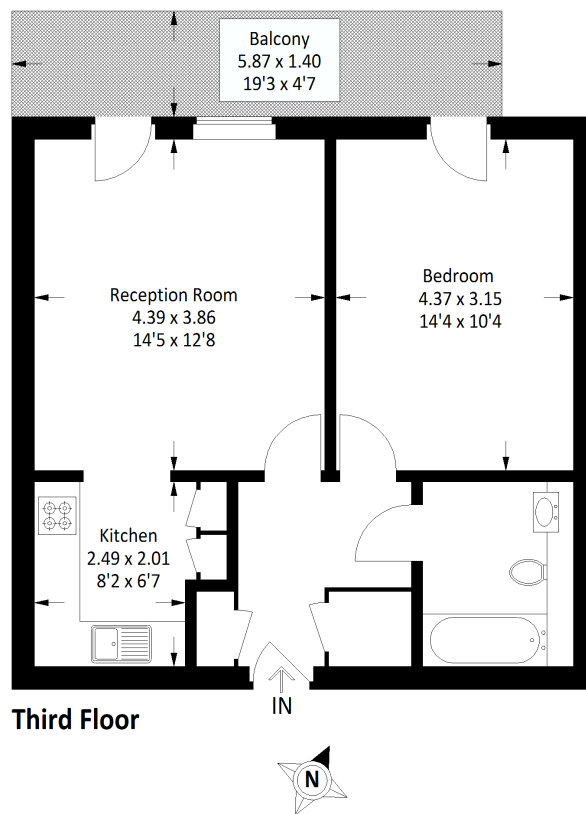
ABOUT THE PROPERTY

A modern one bedroom apartment in a gated development, ideally located in the desirable West Greenwich. This spacious apartment, located on the third floor, boasts an open plan kitchen and reception room with floor-to-ceiling windows, flooding the space with natural light and direct access to the private balcony. The generously sized bedroom also offers direct access to the large balcony.

Conveniently situated just moments from Greenwich mainline and DLR stations, the vibrant Greenwich town centre and the historic royal park, making it perfect for those seeking both modern living and easy access to transport, shops and green spaces.



STEP INSIDE MERRYWEATHER PLACE



Approximate Gross Internal Area = 50.6 sq m / 545 sq ft

Greenwich
020 8815 2230

Energy Rating: B We aim to make our particulars both accurate and reliable. However, they are not guaranteed; nor do they form part of an offer or contract. If you require clarification on any points then please contact us, especially if you're traveling some distance to view. Please note that appliances and heating systems have not been tested and therefore no warranties can be given as to their good working order

MARSH &
PARSONS