

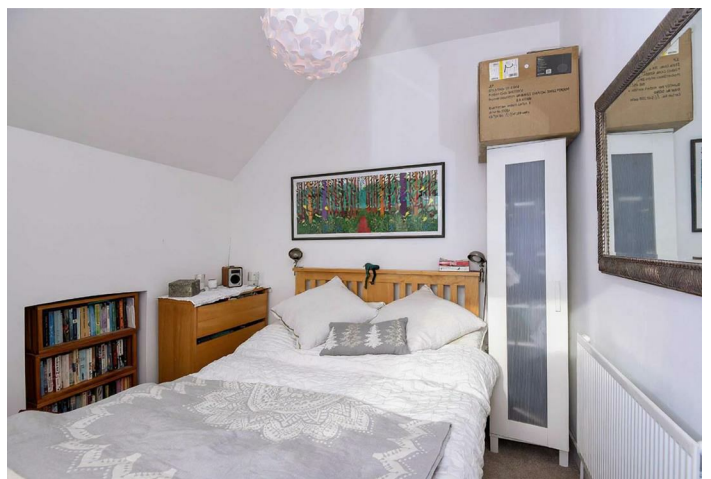


Victoria Road, NW6 £1,900 Per Month

Unfurnished top-floor one-bedroom flat in a converted Victorian house, located on a quiet tree-lined street in the heart of Queen's Park. The property features a bright living room with a fireplace, a separate fully fitted kitchen, a double bedroom, and a modern three-piece bathroom. Ideally situated within walking distance of Salusbury Road's cafés, shops, and restaurants, as well as Queen's Park, with excellent transport links via Queen's Park Station (Bakerloo Line, Zone 2) and 24-hour bus services.



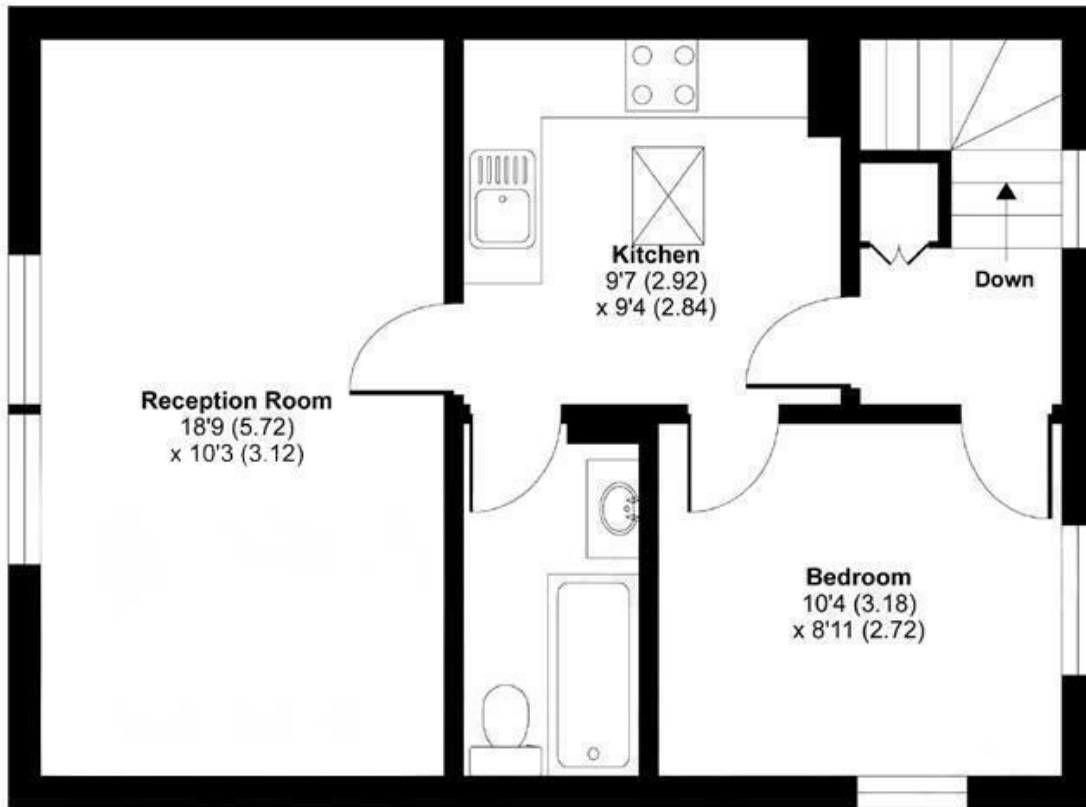
- Lovely 1 bedroom Top Floor Flat
- Offering 533 sq ft of well laid out accommodation
- Stylish modern fitted kitchen
- Transport: Queens Park (Bakerloo- Zone 2)
- Deposit: £2,076
- COUNCIL: Brent (C)



020 8450 9377 - 020 8459 1133
rentals@cameronsstiff.co.uk

Victoria Road, Queens Park, London, NW6

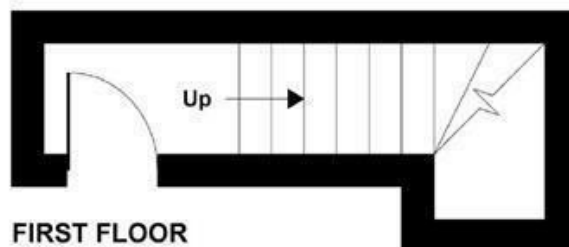
APPROX. GROSS INTERNAL FLOOR AREA 533 SQ FT 49.5 SQ METRES



SECOND FLOOR

EPC: C

Ref: 15083009



FIRST FLOOR

Whilst every attempt has been made to ensure the accuracy of the floor plan contained here, measurements of doors, windows and rooms are approximate and no responsibility is taken for any error, omission or misstatement. These plans are for representation purposes only as defined by RICS Code of Measuring Practice and should be used as such by any prospective purchaser. Specifically no guarantee is given on the total square footage of the property if quoted on this plan. Any figure given is for initial guidance only and should not be relied on as a basis of valuation.

Copyright nichecom.co.uk 2017 Produced for Camerons Stiff & Co REF : 163266

