

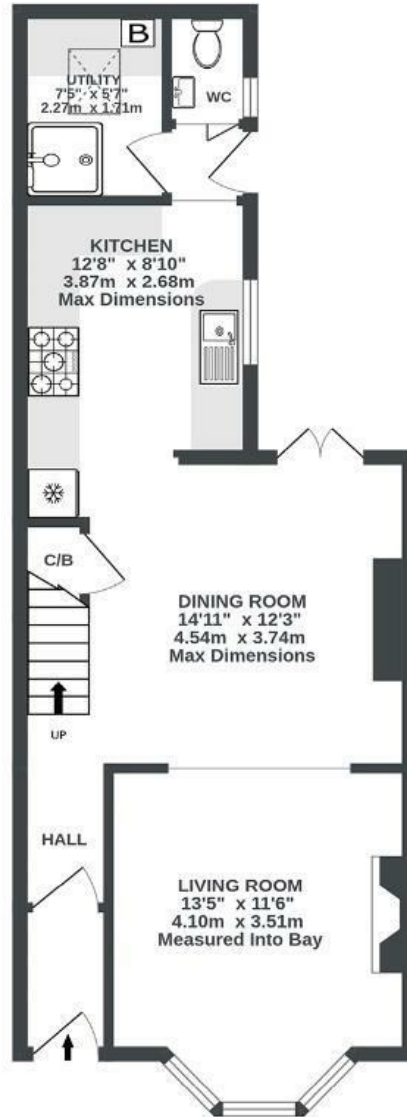
# Dunkerry Road

WINDMILL HILL

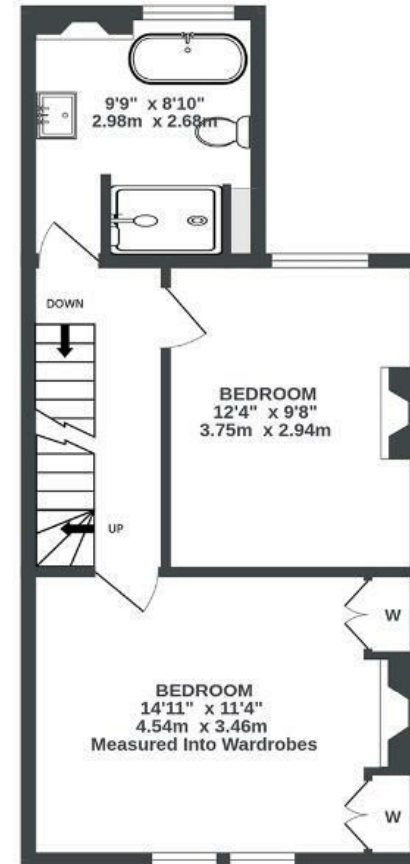
APPROXIMATE FLOOR AREA  
108.3 SQM / 1166 SQFT



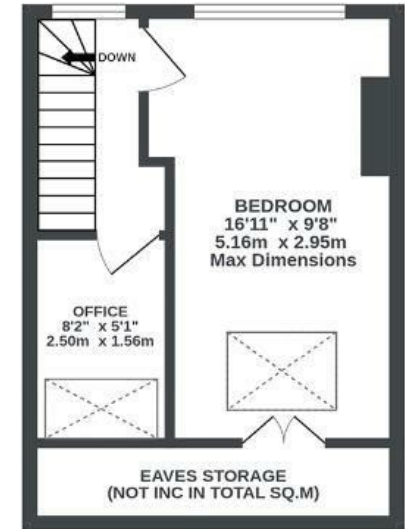
GROUND FLOOR  
506 sq.ft. (47.0 sq.m.) approx.



1ST FLOOR  
425 sq.ft. (39.5 sq.m.) approx.



2ND FLOOR  
234 sq.ft. (21.8 sq.m.) approx.



Illustrations are for reference purposes only, measurements are approximate, not to scale.

Boardwalk

# Dunkerry Road , BRISTOL

£

£550,000

zZz

3 Bedrooms



BS3 4LA



1 Bathrooms

*"Opening the bedroom shutters at dawn and seeing rolling hills towards Dundry - sometimes even with a hot air balloon drifting away - a moment of quiet countryside that seeps into our city house. Heading downstairs to pop the dog on his lead then heading up the road to Victoria Park knowing it won't be long before I've got a steaming coffee and the best pain au chocolat of my life in my hand from the Bristol Loaf down the road. I never tired of this morning routine."*

