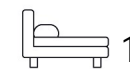




Living
made
better

Baquba Building
Lewisham, SE13 7FF



Asking Price £235,000

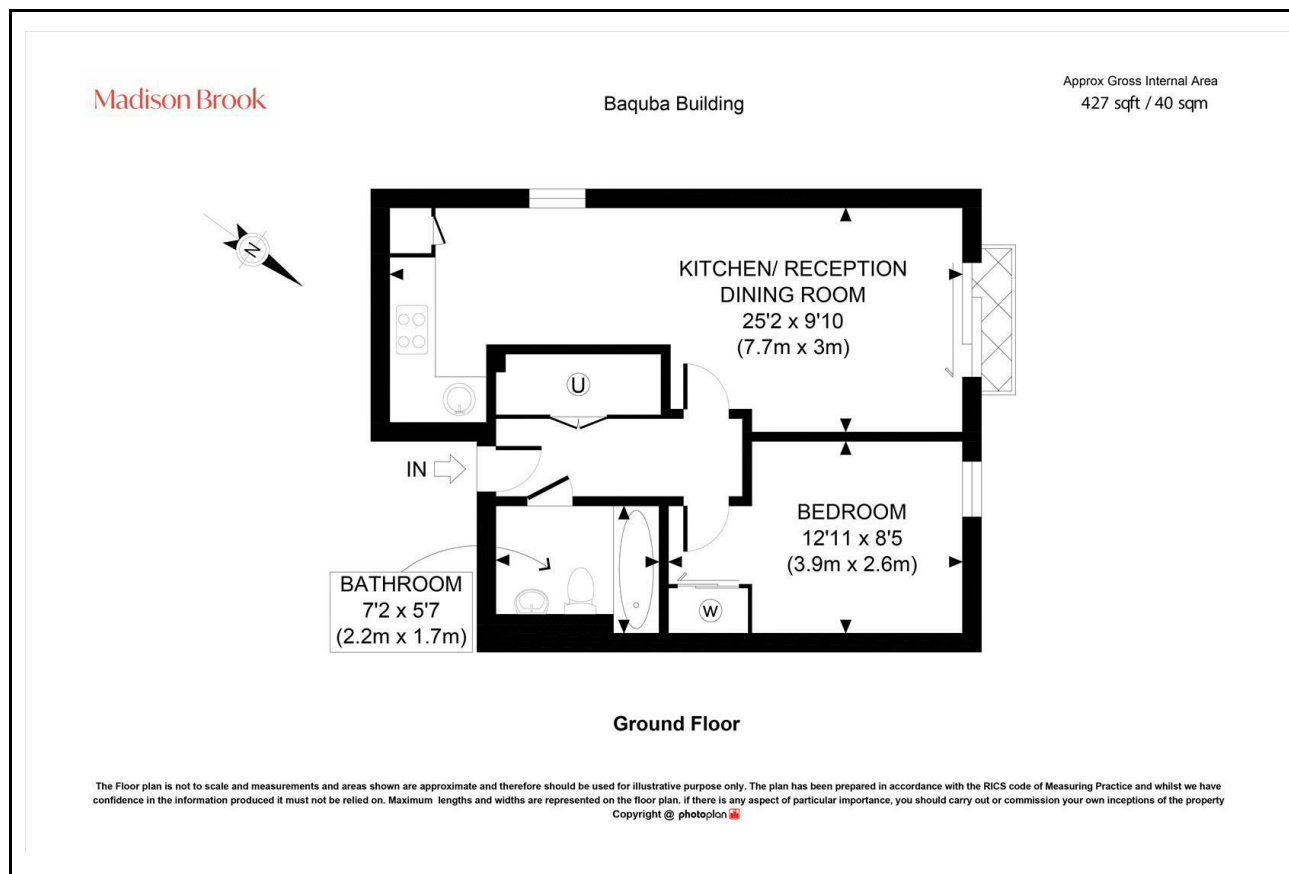
Baquba Building, Lewisham, SE13 7FF

Property Summary

This well-presented one-bedroom apartment is located within the popular Baquba Building and offers approximately 427 sq. ft. of modern living space. The property features a bright open-plan kitchen and reception area with access to a private balcony, a generously sized double bedroom with built-in wardrobe, and a contemporary three-piece bathroom. Residents benefit from a 24-hour concierge service and on-site gym, with Lewisham Station and Lewisham Shopping Centre both within 0.3 miles, providing excellent transport links and local amenities.

Service charge: £2,840 pa | Ground rent: £350 pa | Lease: 988 years remaining

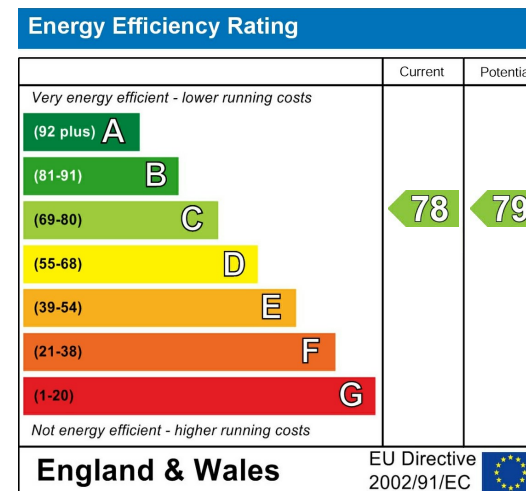
Floorplan



Area Map



Energy Efficiency Graph



These particulars, whilst believed to be accurate are set out as a general outline only for guidance and do not constitute any part of an offer or contract. Intending purchasers should not rely on them as statements of representation of fact, but must satisfy themselves by inspection or otherwise as to their accuracy. No person in this firm's employment has the authority to make or give any representation or warranty in respect of the property.

43 Loampit Vale, Lewisham, London, SE13 7FT

Tel: 020 3946 6200 Email:

lewisham@madisonbrook.com

<https://madisonbrook.com/>