



## Wyndham Place, W1H

£3,500 Per calendar month

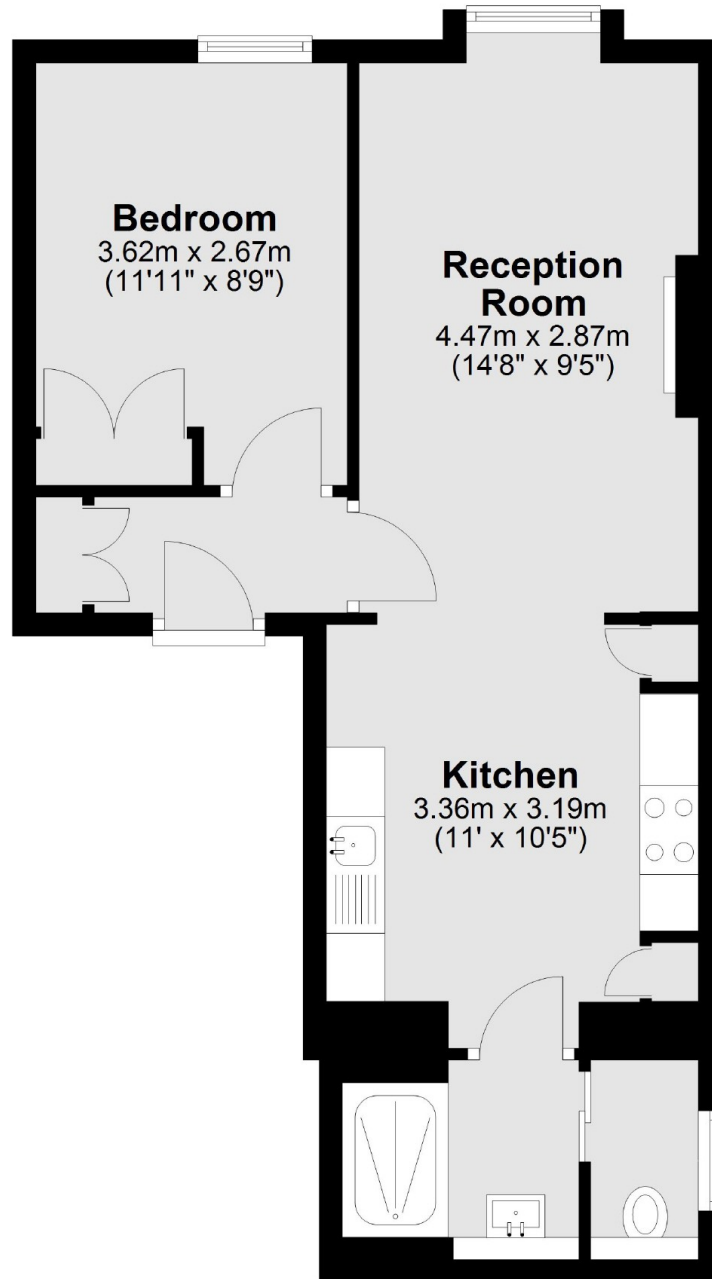
A one bedroom apartment on the first floor of a Georgian building on Wyndham Place. The flat has high ceilings and lots of light throughout, one bathroom, separate kitchen and reception room.

Forming part of a Georgian house located on a quiet residential street close to Portman Village and Hyde Park. Regent's Park and the excellent shops and restaurants of Baker Street also readily accessible.

### Features

- First Floor Flat
- One Bedroom
- One Bathroom
- High Ceilings
- Unfurnished
- The Portman Estate

# Wyndham Place, London, W1H



Total area: approx. 44.5 sq. metres (478.8 sq. feet)