



Sevington Street

Maida Vale, W9

Asking Price £550,000

A beautiful large raised ground floor one-bedroom apartment spanning approximately 570 square feet and is located in the heart of this sought after area.

The apartment forms part of an attractive converted Victorian house and comprises of a grand reception room with high ceilings, full length sash windows offering a wealth of natural light, a separate kitchen/breakfast room, a spacious principal bedroom with fitted wardrobes quietly located to the rear of the apartment, a fully fitted bathroom suite.

Sevington Street is a quiet tree lined residential road which is situated close to all the local amenities offered by this fashionable area, including the boutique shops and cafés on Formosa Street (approx. 0.3 miles), the famous Regent's Canal (approx. 0.4 Miles), Warwick Avenue Underground Station (Bakerloo Line approx. 0.4 miles) as well as Westbourne Park Station (approx. 0.6 miles) which offers both the circle & Hammersmith and city lines.

CHESTERTONS



Sevington Street

Maida Vale, W9

- Beautiful Victorian Conversion
- One Double Bedroom
- Spanning approx. 570 square feet.
- Close To Transport Links



Tenure: Share of Freehold 957 years 5 months

Service Charge: Ad Hoc

Ground Rent: £0

Local Authority: City Of Westminster

Council Tax Band: D

Score	Energy rating	Current	Potential
92+	A		
81-91	B		
69-80	C		79 C
55-68	D	67 D	
39-54	E		
21-38	F		
1-20	G		

Chestertons Little Venice Sales

26 Clifton Road

Maida Vale

London

W9 1SX

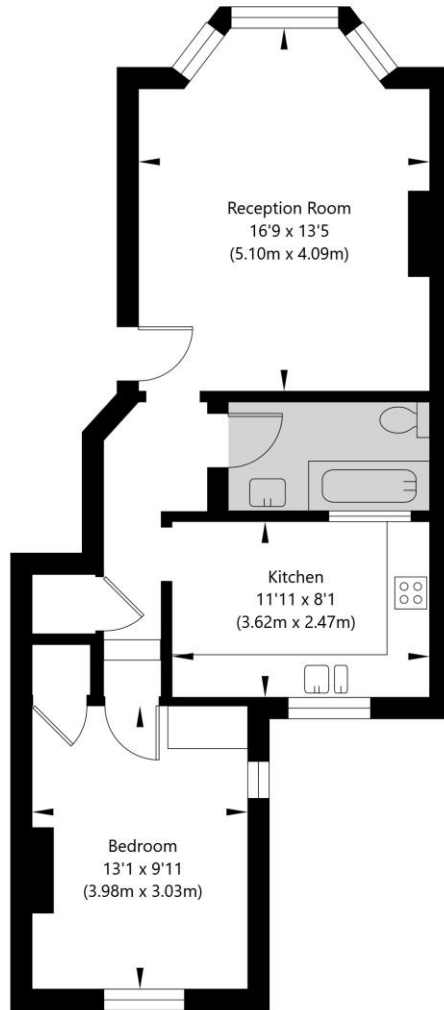
littlevenice@chestertons.co.uk

020 7286 4632

chestertons.co.uk

Sevington Street, London W9 2QN

Raised Ground Floor
GROSS INTERNAL FLOOR AREA
APPROX. 52.87 SQ M / 569 SQ FT



APPROXIMATE GROSS INTERNAL FLOOR AREA 52.87 SQ M / 569 SQ FT
THIS FLOOR PLAN IS FOR ILLUSTRATIVE PURPOSES ONLY AND
SHOULD BE USED FOR THIS PURPOSE BY PROSPECTIVE APPLICANTS AS ITS NOT TO SCALE.

(c) AMBERSHORE PIX LIMITED / PHOTO - VIDEO - FLOOR PLANS / 0800 999 1577 / WWW.AMBERSHOREPIX.CO.UK

