



Castles

ASKING PRICE

£270,000

Egret Court, Teal Close

Enfield, EN3 5TL Leasehold

PROPERTY SUMMARY

Viewing available in January 2026 . A 2 double bedroom 2nd floor modern purpose built flat located off Turkey Street next to Turkey Street train station (serving London Liverpool Street) and close to Great Cambridge Road and local shops. The property offers spacious accommodation and balcony overlooking a local park. Viewing is highly recommended.

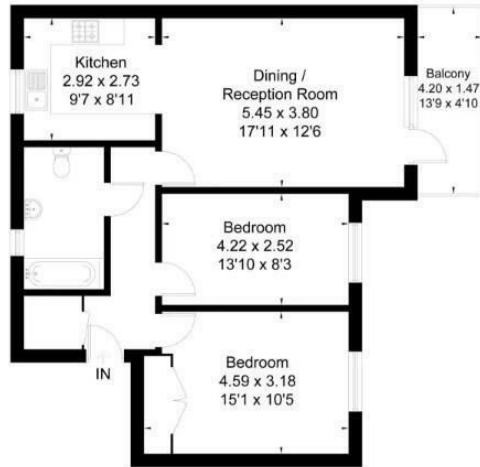
Part buy, part rent. Conditions may apply.





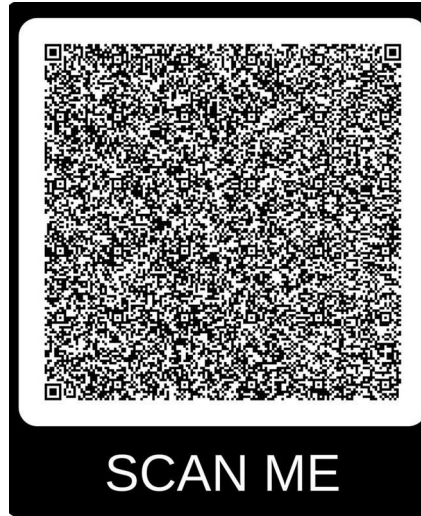
For a guide to the area
please scan this code for
more information

Approximate Floor Area = 70.1 sq m / 754 sq ft



Second Floor

This floor plan has been drawn in accordance with RICS Property Measurement 2nd edition.
All measurements, including the floor area, are approximate and for illustrative purposes only. @fourwalls-group.com #57254



Flat Leasehold

Council: Enfield

Council Tax Band: C

Lease Remaining: New lease being extended by seller to 204 years

Service Charge: £168.35 pcm

Ground Rent: £0

Agents Note: Whilst every care has been taken to prepare these particulars, they are for guidance purposes only. All measurements are approximate and are for general guidance purposes only and whilst every care has been taken to ensure their accuracy, they should not be relied upon and potential buyers/tenants are advised to recheck the measurements



OFFICE ADDRESS

243 - 245 Hertford Road
Enfield
London
EN3 5JJ

OFFICE DETAILS

0208 804 8000
enfield@castles.london
<https://www.castles.london>

Energy Efficiency Rating			
	Current	Potential	
Very energy efficient - lower running costs			
A (12-14)			
B (11-15)			
C (10-16)			
D (9-12)			
E (8-10)			
F (7-8)			
G (6-7)			
Not energy efficient - higher running costs			
England & Wales			