



Connells

Seaton Grove
Broughton Milton Keynes



Property Description

This well-presented home opens into a welcoming entrance hall with stairs to the first floor and access to the ground floor rooms. The comfortable lounge enjoys plenty of natural light from a double-glazed window and offers space for seating and media furniture.

The fitted kitchen features a range of wall and base units, work surfaces, stainless steel sink, electric hob and oven, while a double-glazed window provides natural light. The adjoining dining area offers space for a table and chairs and benefits from patio doors opening onto the rear garden, ideal for indoor-outdoor living. A convenient ground floor WC completes the downstairs.

Upstairs, the property offers three well-proportioned bedrooms. Bedroom one benefits from a double-glazed window and a private en suite shower room. Bedrooms two and three are both light and versatile, suitable for guest rooms, children's bedrooms or a home office. The family bathroom is fitted with a bath with shower over, WC and wash hand basin

Entrance Hall

Entrance hallway with stairs to the first floor and access to ground floor accommodation.

Lounge

Comfortable lounge with double-glazed window, electric radiator and space for seating and media furniture.

Kitchen

Fitted kitchen with a range of wall and base units, work surfaces, stainless steel sink, electric hob and oven, and a double glazed window providing natural light.

Dining Area/Bedroom Four

Dining area with space for table and chairs, benefiting from natural light and patio doors

providing access to the rear garden.

W/C

Ground floor WC fitted with a low level WC and wash hand basin.

Bathroom

Bathroom fitted with a bath and shower over, WC, wash hand basin and radiator.

Bedroom One

Bedroom one with double glazed window and direct access to an en suite shower room.

En-Suite

En suite shower room fitted with a shower enclosure, WC, wash hand basin and radiator.

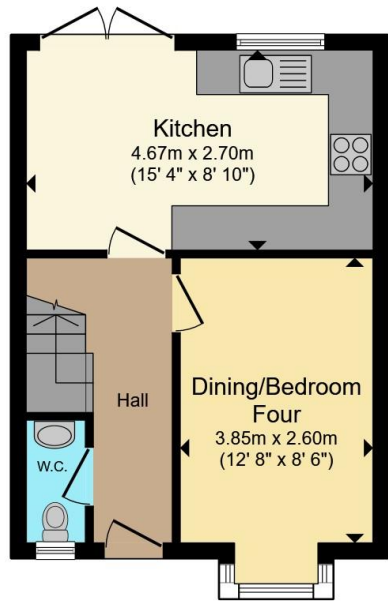
Bedroom Two

Bedroom two with double glazed window, suitable for a child's room or guest accommodation.

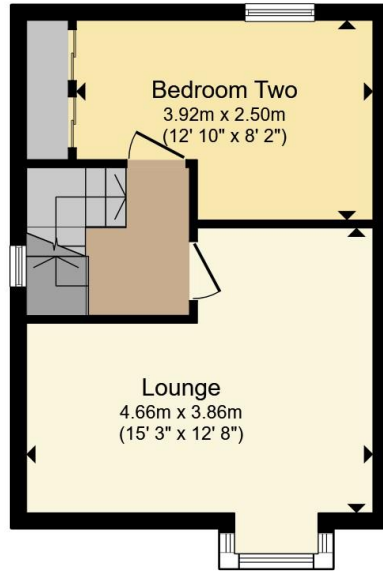
Bedroom Three

Bedroom three with double glazed window, offering flexible space suitable for a bedroom or home office

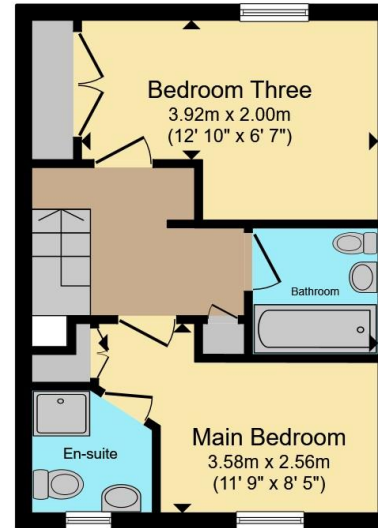




Ground Floor



First Floor



Second Floor



Total floor area 94.4 m² (1,016 sq.ft.) approx

This floor plan is for illustrative purposes only. It is not drawn to scale. Any measurements, floor areas (including any total floor area), openings and orientation are approximate. No details are guaranteed, they cannot be relied upon for any purpose and they do not form part of any agreement. No liability is taken for any error, omission or misstatement. A party must rely upon its own inspection(s). Powered by www.propertybox.io



To view this property please contact Connells on

T 01908 691606

E walnuttree@connells.co.uk

26A Fyfield Barrow The Walnut Tree Local Centre Walnut Tree

EPC Rating: C Council Tax Band: C

Tenure: Freehold

view this property online connells.co.uk/Property/WNT306692



1. MONEY LAUNDERING REGULATIONS Intending purchasers will be asked to produce identification documentation at a later stage and we would ask for your co-operation in order that there will be no delay in agreeing the sale. 2. These particulars do not constitute part or all of an offer or contract. 3. The measurements indicated are supplied for guidance only and as such must be considered incorrect. Potential buyers are advised to recheck measurements before committing to any expense. 4. We have not tested any apparatus, equipment, fixtures, fittings or services and it is in the buyers interest to check the working condition of any appliances.

Connells Residential is registered in England and Wales under company number 1489613, Registered Office is Cumbria House, 16-20 Hockliffe Street, Leighton Buzzard, Bedfordshire, LU7 1GN. VAT Registration Number is 500 2481 05.

See all our properties at www.connells.co.uk | www.rightmove.co.uk | www.zoopla.co.uk

Property Ref: WNT306692 - 0002