

Gloucester Road, W3

£250,000

Modern, sleek and seamless. This top floor Victorian conversion is ideal for buyers looking for a turn-key residence offering a share of the freehold minimising costs and control over the lease. The property has newly laid flooring, high ceilings and is situated on the very residential pocket of Gloucester Road - conveniently positioned south of the High Street and borders of Chiswick.

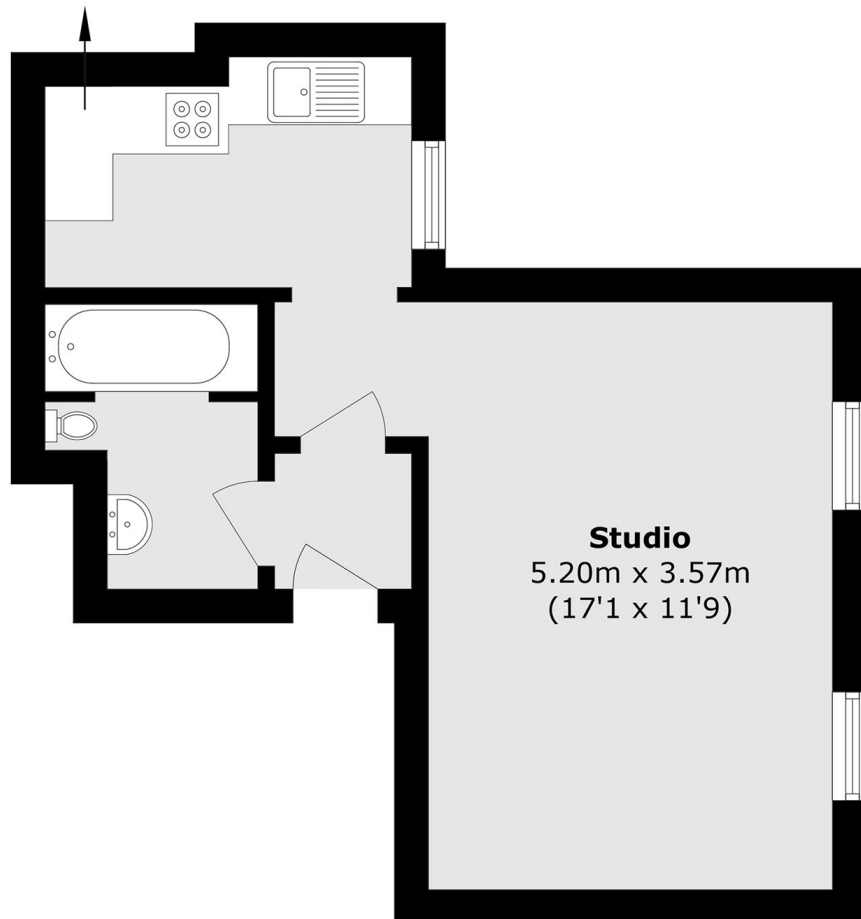
Located under a mile from Acton Town station (District and Piccadilly line) and a short walk from Acton Central (Overground line). Gloucester Road benefits from being positioned nearby both Acton and Chiswick High Street.

Features

- Top Floor Victorian Conversion
- Lateral Space
- Share of Freehold
- Modern Condition
- Local Amenities Nearby
- Great Transport Links

Gloucester Road,
London, W3

Kitchen
3.14m x 1.96m
(10'4 x 6'5)



Total area (approx.): 32.8 sq. m (353.0 sq. ft)

Dexters

Acton
171 High Street
London
W3 6LP
Sales
020 8896 2112

Energy Rating: E. We aim to make our particulars both accurate and reliable. However they are not guaranteed; nor do they form part of an offer or contract. If you require clarification on any points then please contact us, especially if you're traveling some distance to view. Please note that appliances and heating systems have not been tested and therefore no warranties can be given as to their good working order.

 **RICS** | Regulated
Estate Agent
and Letting Agent

dexters.co.uk