



Pembroke Square, W8

£16,500 Per calendar month

A stunning four-bedroom family home offering spacious, light-filled interiors with large skylights and open-plan living. Finished with wooden flooring and elegant marble details in the kitchen and bathroom.

Located just a 5 minute walk from High Street Kensington Station. Virgin Active and Holland Park

Features

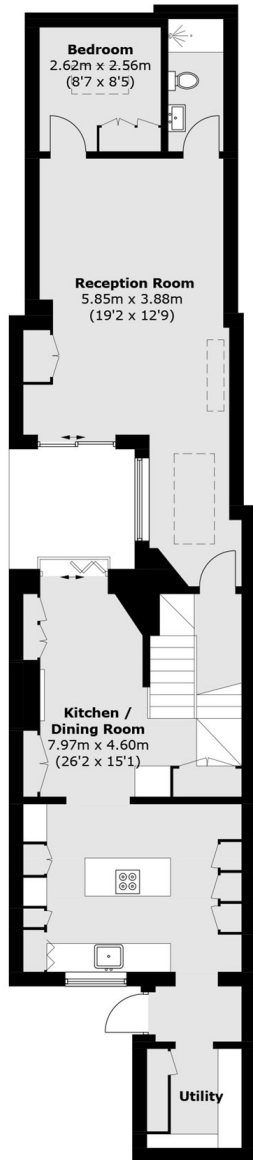
- Four Bedroom
- Four Receptions
- Four Bathrooms
- Patio
- Mezzanine
- Natural Lighting
- Access to nearby tennis court



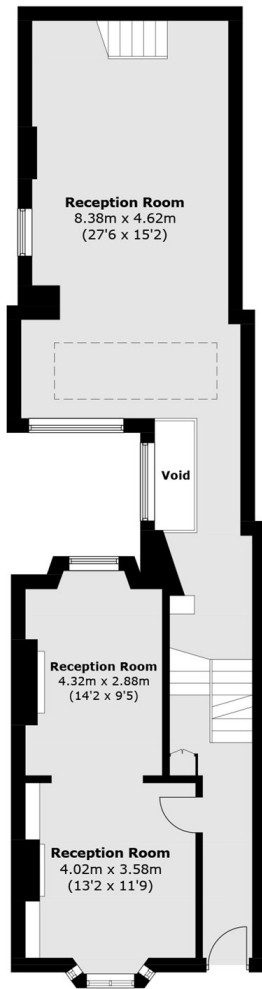
Pembroke Square, W8



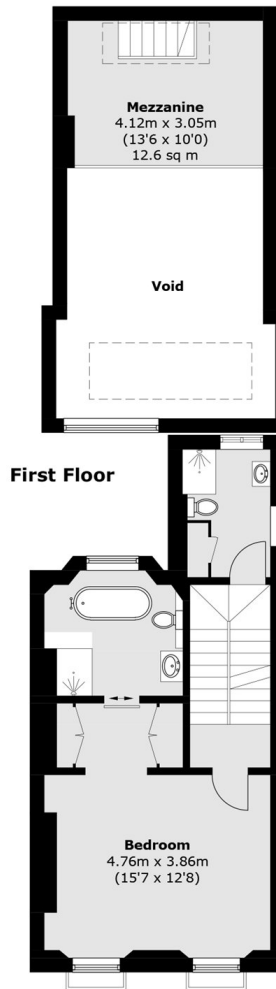
Pembroke Square, London, W8



Lower Ground Floor

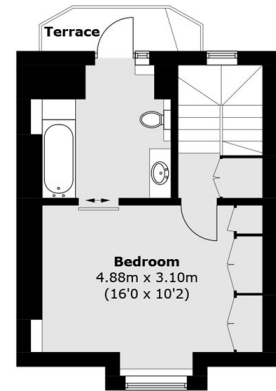


Raised Ground Floor

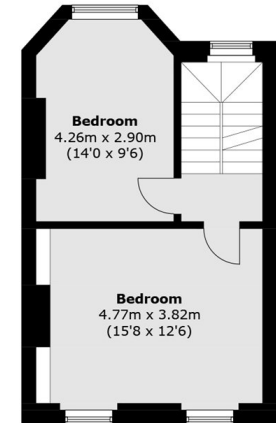


First Floor

First Floor



Third Floor



Second Floor

Total area (approx.): 286.1 sq. m (3,079.6 sq. ft)
(Excluding Void)
Terrace area (approx.): 2.8 sq. m (30.1 sq. ft)