



Flat 1, 131, Longden Coleham, Coleham, Shrewsbury, SY3 7DN
£650 Per Month



Flat 1, 131, Longden Coleham, Coleham, Shrewsbury, SY3 7DN

£650 Per Month

VIRTUAL TOUR AVAILABLE - Spacious one bedroom ground floor apartment in the heart of Coleham on the edge of Shrewsbury town centre and the beautiful Quarry Park. The property has been modernised throughout and benefits from a modern kitchen, bathroom, flooring, wiring and decor.

Available: 09/06/26

Description

Comprising: Entrance lobby, large open plan living, dining and kitchen room including oven & hob, shower room, large double bedroom. Ample storage. Gas central heating, partial double glazing. EPC D

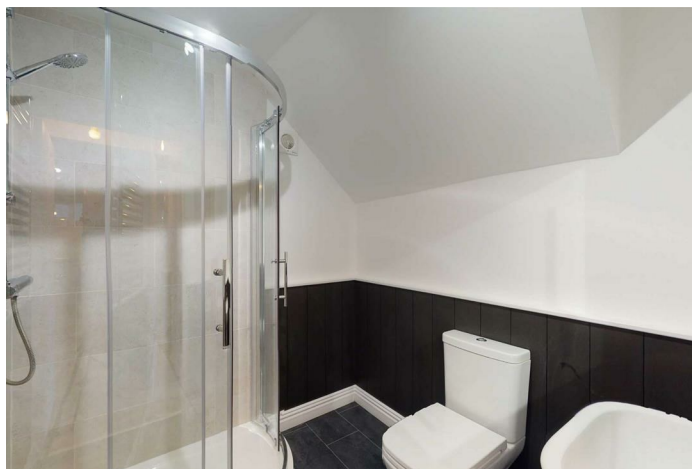


Unfurnished

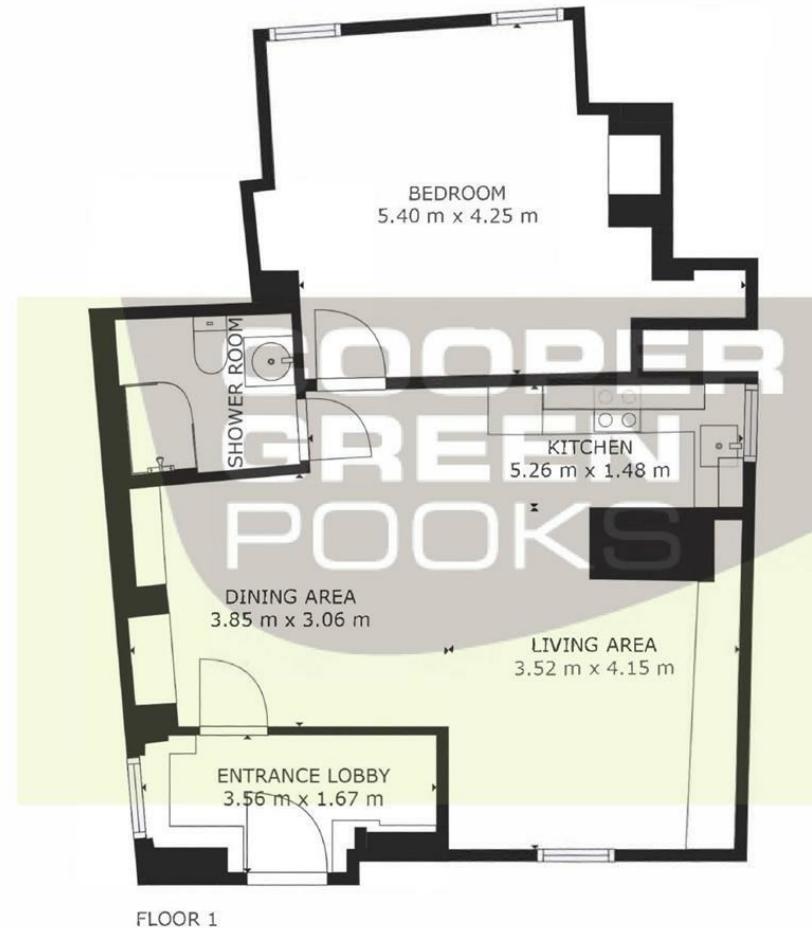
Council Tax Band: A

Available: 9th June 2026

EPC: D



Floor Plans



GROSS INTERNAL AREA
FLOOR 1: 63 m²
TOTAL: 63 m²
SIZES AND DIMENSIONS ARE APPROXIMATE, ACTUAL MAY VARY.



These particulars, whilst believed to be accurate are set out as a general outline only for guidance and do not constitute any part of an offer or contract. Intending purchasers should not rely on them as statements of representation of fact, but must satisfy themselves by inspection or otherwise as to their accuracy. No person in this firm's employment has the authority to make or give any representation or warranty in respect of the property.