



COCKBURN
ESTATE AND LETTINGS AGENTS

Southern Way

SE10 OPR

***** CHAIN FREE SALE *****

This charming two-bedroom maisonette is located within Kilby Court, forming part of the popular Greenwich Millennium Village.

Set over two floors and offering 910 Sq. Ft of internal space, this stunning property consists of a bright, airy living room which provides access to a private patio, an open plan kitchen equipped with a range of appliances and a ground floor W/C; with the second floor providing access to two generously sized double bedrooms and a chic family bathroom suite. The property benefits from its own allocated parking garage.

Ideally situated for the commuter, the property is only a short walk from numerous bus routes and North Greenwich Station (Jubilee Line).

Greenwich Millennium Village is a highly sought-after development at the base of the North Greenwich Peninsula, close to local shops, a retail park, and GP services just a short walk away. Southern Park and Greenwich Ecology Park are also nearby.

Lease Length 972 Years
Service Charge £3,319.20 Per Annum
Ground Rent £50.04 Per Annum
(all figures are approx)



Key Features:

- ❑ Chain Free Sale
- ❑ Split Level Apartment
- ❑ Two Double Bedrooms
- ❑ Private Terrace Area
- ❑ Private Parking Garage
- ❑ Concierge On Site
- ❑ Excellent Bus Links & North Greenwich Station Within Walking Distance
- ❑ Easy Reach Of The O2 Arena + Shopping Outlet
- ❑ Close To Schools, Nurseries & Open Green Spaces
- ❑ Council Tax Band C - Royal Borough Of Greenwich





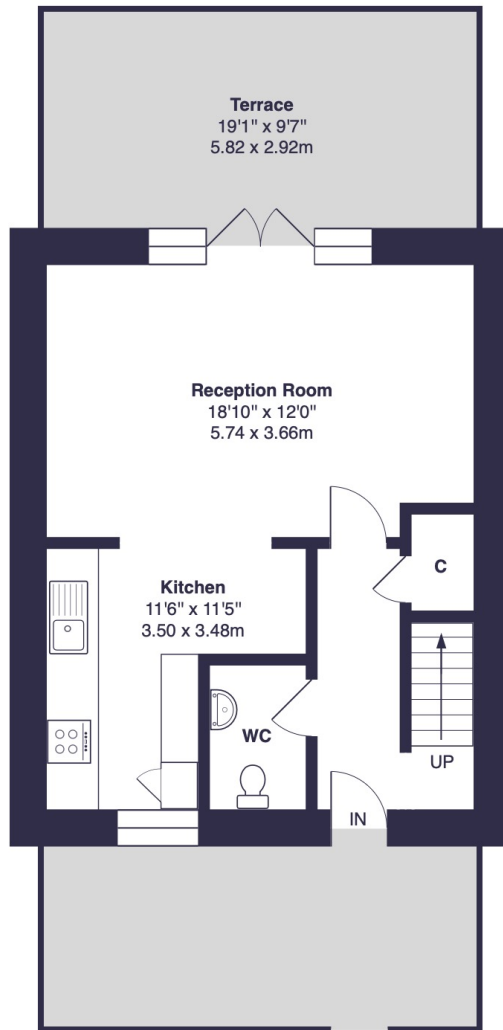
Southern Way, SE10

Approximate Gross Internal Area = 900 sq ft / 83.6 sq m

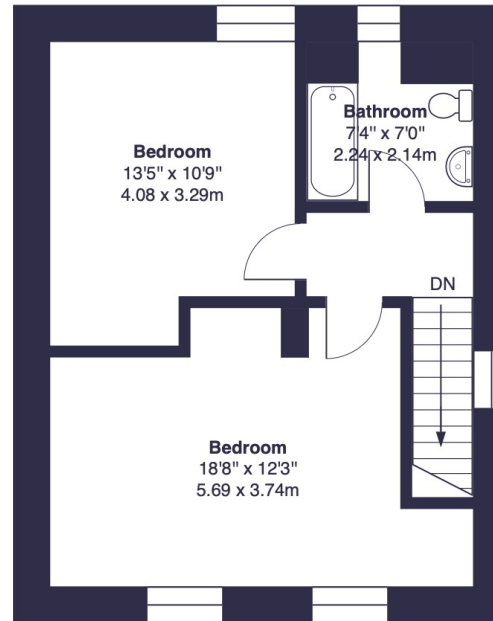
EPC: C

COUNCIL TAX BAND: C

TENURE: Leasehold



Ground Floor



First Floor

This floor plan was produced using RICS measurements standards 2nd edition.
For layout guidance only and not drawn to scale unless stated. Window and door openings are approximate.
Whilst every care is taken in the preparation of this plan, we would advise interested parties to check all dimensions, shapes and compass bearings prior to making any decisions reliant upon them. No liability is accepted for any errors.
By www.primesquarephotography.com / Copyright 2026

For more information on this property or to arrange a viewing please call the office on

0208 859 8590

Alternatively, you can scan below to view all of the details of the property online.



352 Footscray Road
New Eltham
London
SE9 2EB