



## Maitland Park Road, NW3

### £425,000

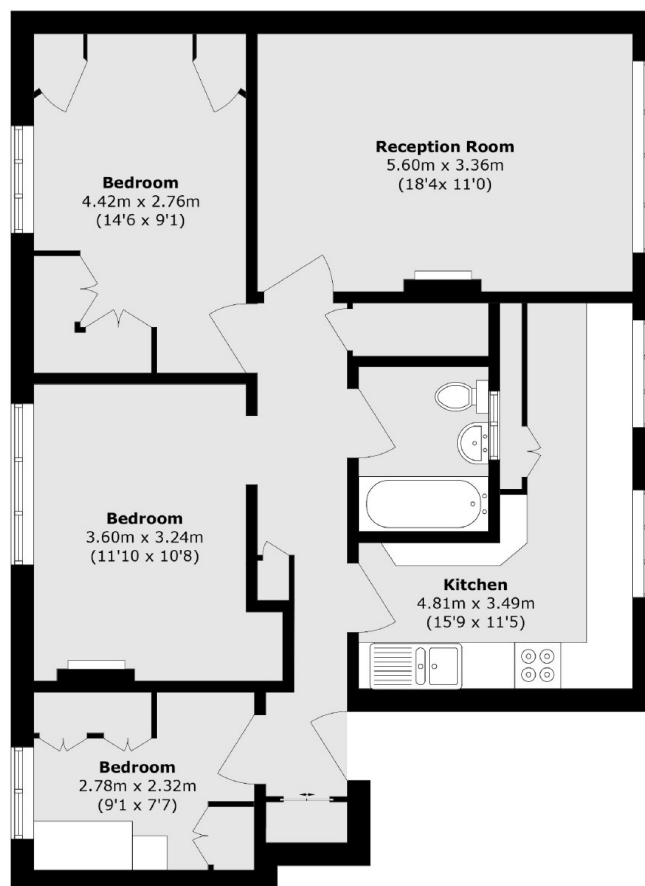
This spacious three bedroom apartment has a large reception room and a separate kitchen. The apartment has lots of windows throughout, letting in lots of natural light.

Located in the Maitland Park Conservation Area area between Belsize Park and Chalk Farm, and is only 0.5 miles away from both Northern line stations. Hampstead is also easily accessible, with a variety of shops, restaurants and cafés.

### Features

- Three Bedrooms
- One Bathroom
- Leasehold
- Chain Free
- First Floor
- Great Location

# Maitland Park Road, London, NW3



Total area (approx.): 75.1 sq. m (808.4 sq. ft)