



Oakwood Road, Hampstead Garden Suburb, NW11

Freehold

£950,000

 **litchfields**

800 Finchley Road, Hampstead Garden Suburb, London, NW11 7TJ

020 8458 5000

[sales@litchfields.com](mailto:sales@litchfields.com)

[www.litchfields.com](http://www.litchfields.com)

Offices also in Highgate



Situated on a sought-after corner plot along a popular residential road, this delightful three-bedroom cottage is just moments from the vibrant amenities of The Market Place, as well as the green open spaces of Big Wood and Northway Gardens. Extended on the ground floor, the property offers bright and well-proportioned living throughout. The accommodation comprises a spacious double reception room, perfect for both relaxing and entertaining, alongside a kitchen/breakfast room and a convenient guest WC. Upstairs, the home features three bedrooms and a family bathroom, providing comfortable living space for families or professionals alike. The standout feature of this property is the stunning wrap-around garden, offering excellent outdoor space ideal for entertaining. Offered to the market chain free, this superb home presents an excellent opportunity for buyers seeking character, space, and a prime location. Early viewing is highly recommended.



3

1

2

D

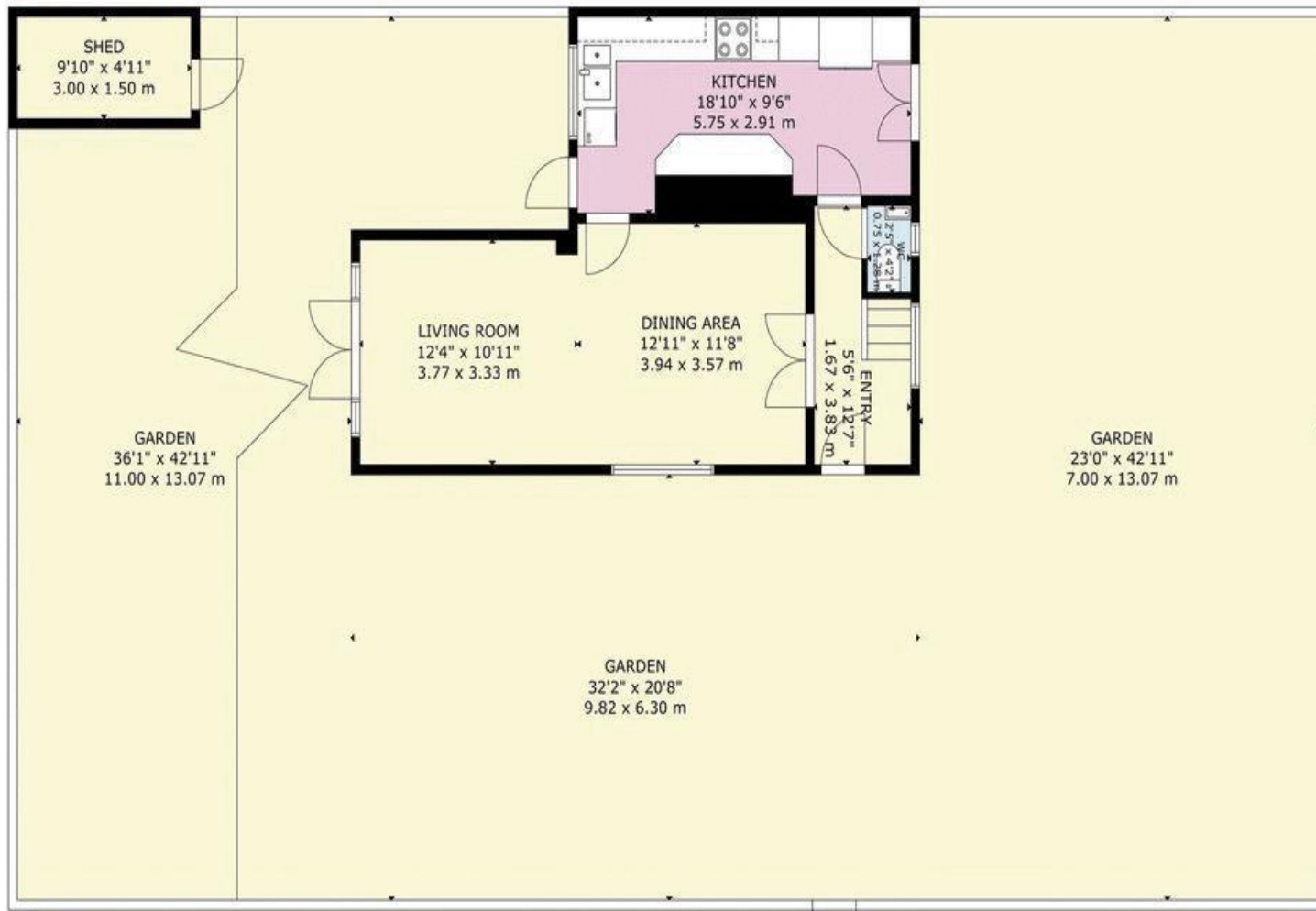


- 3 bedrooms
- Lounge/dining room
- Kitchen/breakfast room
- Bathroom
- Downstairs wc
- Wrap around garden

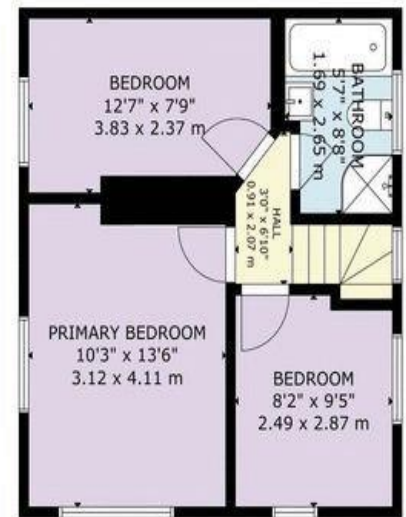








GROUND FLOOR



FIRST FLOOR

GROSS INTERNAL AREA  
TOTAL: 89 m<sup>2</sup>/955 sq ft  
GROUND FLOOR: 51 m<sup>2</sup>/545 sq ft, FIRST FLOOR: 38 m<sup>2</sup>/410 sq ft  
EXCLUDED AREAS: GARDEN: 304 m<sup>2</sup>/3,270 sq ft, SHED: 5 m<sup>2</sup>/48 sq ft  
SIZE AND DIMENSIONS ARE APPROXIMATE, ACTUAL MAY VARY

