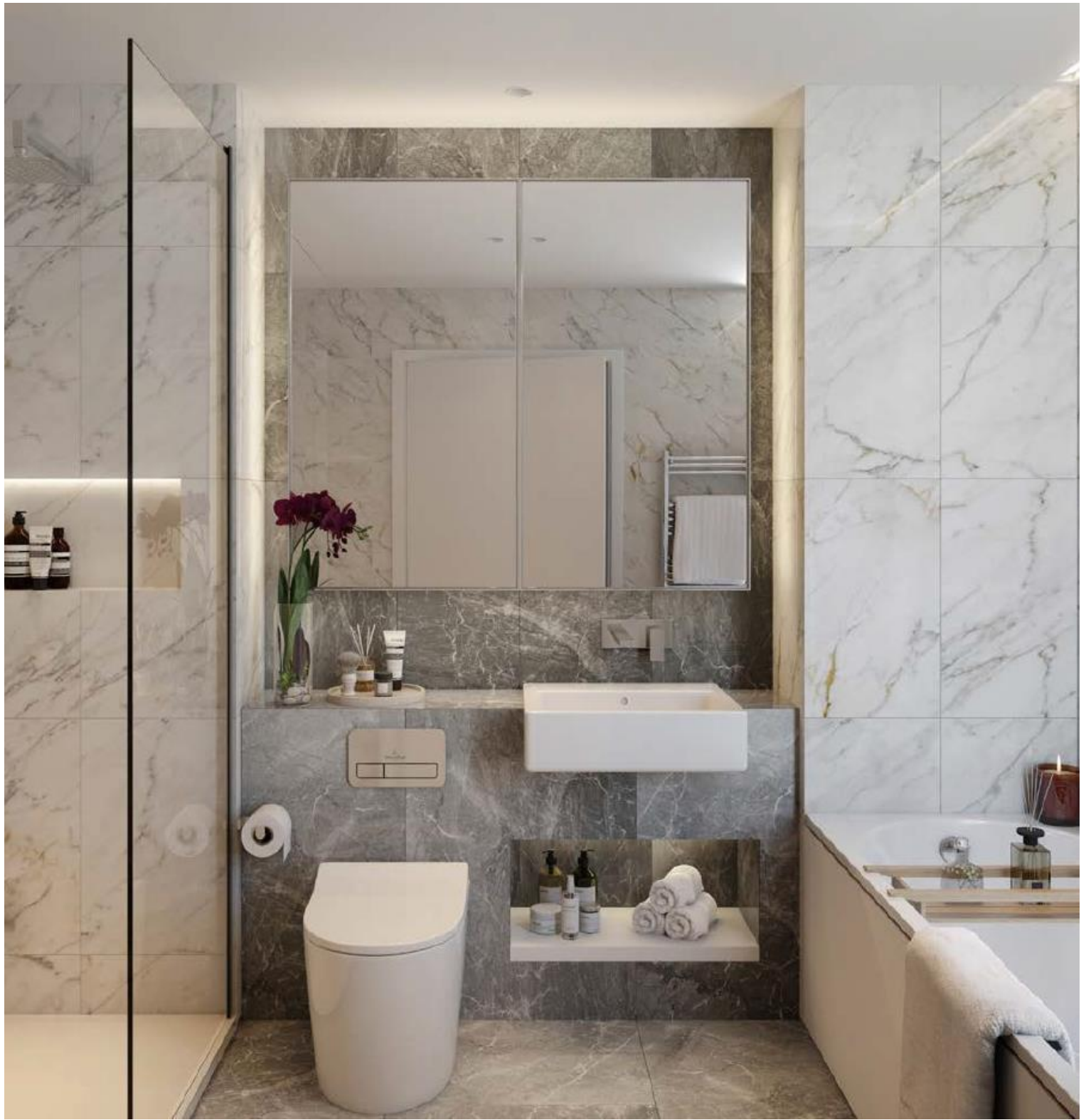




Chelsea Riverview, London SW6

Price £1,100 per week - Unfurnished







Description

Please note photos are for indicative purposes.

JLL are delighted to present a selection of one and two bedroom apartments in the new and exciting Chelsea Riverview Development, SW6. The development offers fantastic on-site resident facilities and is conveniently located for access to Central London.

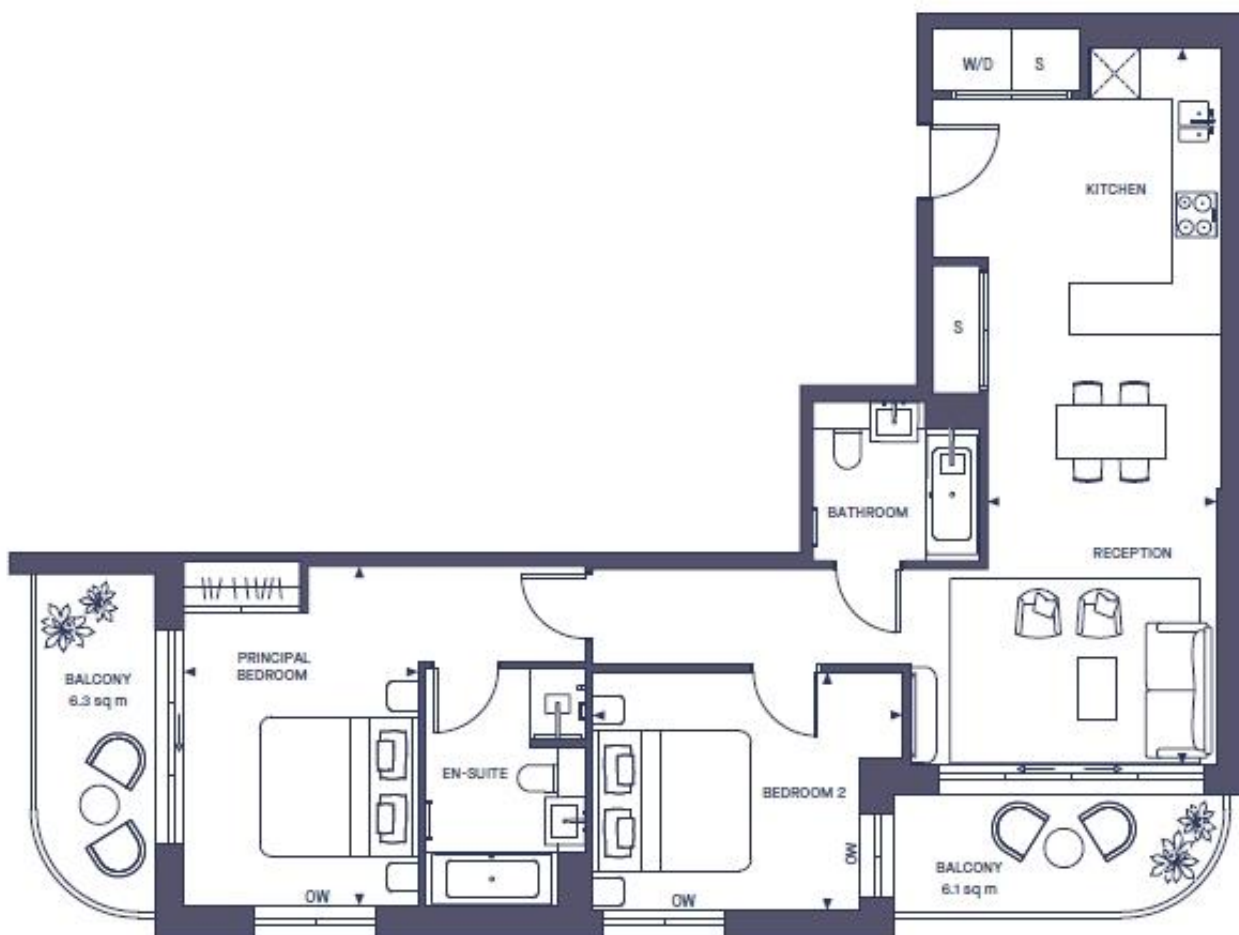
The apartments will be finished to an exceptional standard with a fully fitted kitchen with state of the art appliances, spacious living room, master bedroom with built-in storage and an en-suite, a second bedroom and family sized bathroom as well as a balcony. It also has fantastic on site amenities which include 24 hour concierge, fitness/yoga studio, River Club Cinema and capacious residents' lounge.

Council tax band: TBC. Rent is payable on a monthly basis, and you may be required to pay more than a month's rent in advance for tenancies with annual rents exceeding £100,000. You will be required to pay a 1 week holding deposit following a successful offer. Tenancies with annual rents up to £50,000 will require a 5 weeks' security deposit, while those exceeding this threshold will require a 6 weeks' deposit. Utility bills, council tax, telephone line and broadband are not included in the rent. As well as paying the rent, you may also be required to make some additional permitted payments. If your tenancy does not qualify as an APT, additional fees may apply. Please visit jll.co.uk/fees for details of fees that may be payable when renting a property. To check broadband and mobile phone coverage please visit Ofcom here ofcom.org.uk/phones-telecoms-and-internet/advice-for-consumers/advice/ofcom-checker

- Gymnasium
- Cinema room
- Fitness studio
- Yoga studio
- The River Club Cinema
- 24 hour concierge
- Chelsea River Club
- Residents' lounge
- Council tax: TBC
- Deposit amount: £6,600

Floorplan

sq ft | sq m



Chelsea
2 Cale Street,
London SW3 3QU
+4420 7399 5010
saleschelsea@jll.com

Urban living, your way.

jll.co.uk/residential

© 2019 Jones Lang LaSalle IP, Inc. All rights reserved. All information contained herein is from sources deemed reliable; however, no representation or warranty is made to the accuracy thereof.

