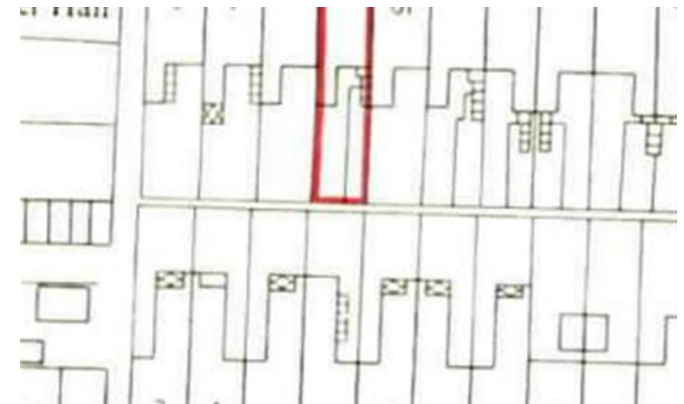


HS HAIR & SON



Ronald Park Avenue

, Westcliff-on-Sea SS0 9QL

- *****FREEHOLD INVESTMENT OPPORTUNITY*****
- PRODUCING AN OVERALL INCOME OF £17,700 PER ANNUM
- ONE BEDROOM GROUND FLOOR FLAT
- WEST FACING REAR GARDEN SPLIT 50/50
- BOTH LET ON ASSURED SHORTHOLD TENANCIES
- TWO FLATS
- THREE BEDROOM FIRST FLOOR MAISONETTE
- *****CASH BUYERS ONLY*****

Offers In The Region Of £375,000 Freehold

Local Authority
Council Tax Band **A**
EPC Rating **D**

Sales Office

190 London Road, Southend-On-Sea,
Essex, SS1 1PJ

Contact

01702 34 11 77

<https://hairandson.co.uk/>

Agents Note: Whilst every care has been taken to prepare these particulars, they are for guidance purposes only. All measurements are approximate and for general guidance purposes only and whilst every care has been taken to ensure accuracy, they should not be relied upon and potential buyers/tenants are advised to recheck the measurements.