

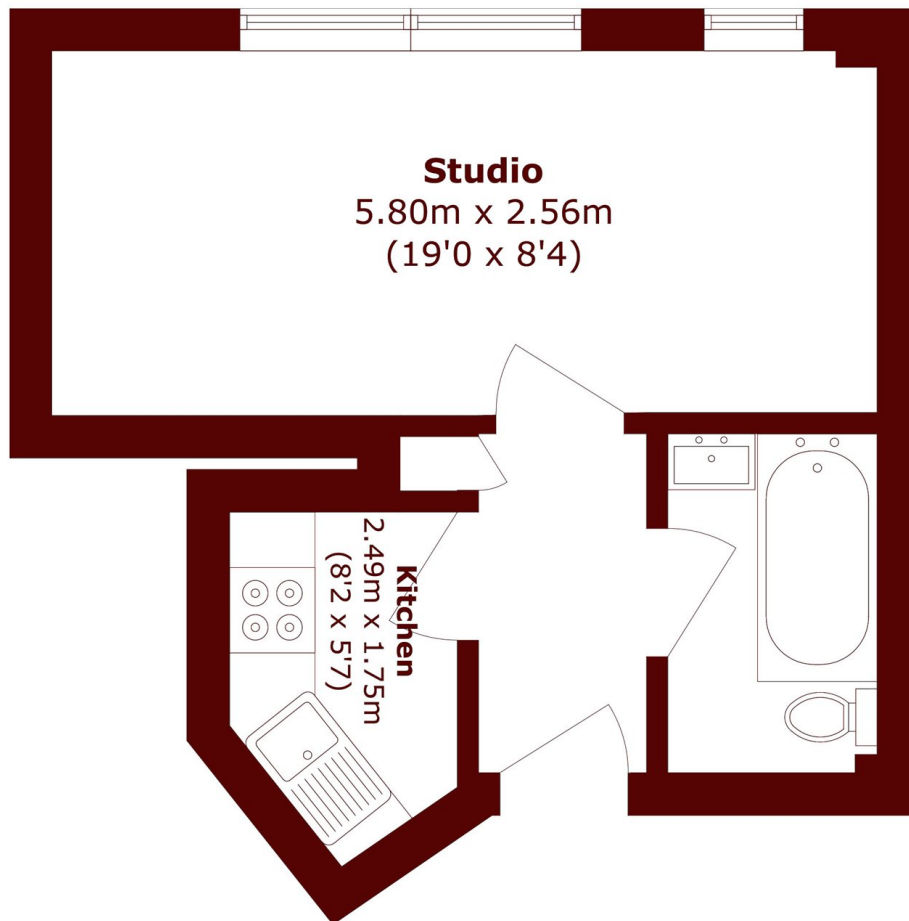


Upper Berkeley Street, W1H

£225,000



- Studio
- Concierge
- Wooden floors
- Long lease
- Central location
- Energy rating: c



Total area (approx.): 25.9 sq. m (278.8 sq. ft)

Marsh & Parsons Marylebone & Mayfair

94 Baker Street, London,
W1U 6FZ
020 7935 1775