



12 Hemingway Court

Thornhill Road, Ponteland



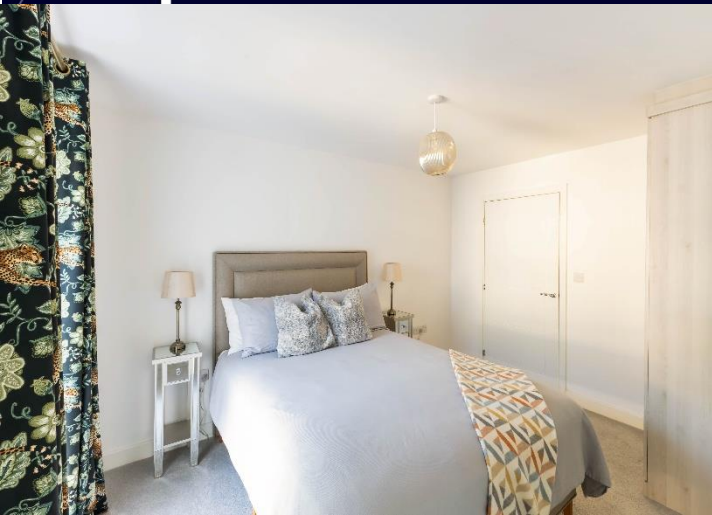
12 Hemingway Court, Thornhill Road, Ponteland, NE20 9DQ

An excellent two bedroom purpose built apartment, positioned to the first floor of Hemingway Court, with a Juliet balcony to the open plan sitting room/kitchen, allocated parking for one car and attractive communal grounds. The contemporary apartment, built by Ascent Homes in 2019, has been further improved with bespoke fitted wardrobes and drawers added to the principal bedroom.

The property is ideal for a number of buyers including young professionals, downsizers/retired and investors seeking a property for rental. Hemingway Court is ideally placed in the centre of Ponteland village, only minutes walk from the local shops, supermarkets, cafes, and pubs and restaurants, as well as excellent public transport links to Newcastle city centre and Newcastle International Airport.

The internal accommodation comprises: Secure communal entrance | Lift and stair access to all floors | Hallway with large storage cupboard | Fabulous open plan kitchen/sitting room with French doors opening to a Juliet balcony | Contemporary fitted kitchen with modern cabinetry, worktops and integrated appliances | Generous principal bedroom with fitted wardrobes and drawers | Ensuite shower room WC with double length shower | Bedroom two, enjoying a further double room | Bathroom WC with rainfall head and hand held shower over the bath, basin & WC | Communal grounds | Allocated parking space | Visitor parking.





Offered to the market with No Onward Chain, early viewings are strongly encouraged!

Services: Mains electric, gas, water and drainage | Tenure: Leasehold | Council Tax: Band D | Energy Performance Certificate: Rating B |
Service Charge per annum: £2054.05 | Lease Length: 242 Years

Price Guide: Offers Over £255,000



*Floorplans
Coming soon...*



SANDERSON
YOUNG

Regional Gosforth Office
95 High Street | Gosforth
Newcastle upon Tyne | NE3 4AA
gosforth@sandersonyoung.co.uk
0191 213 0033