



Unity Building, 3 Rumford Place, Liverpool, Merseyside L3 9BZ

£1,300 PCM

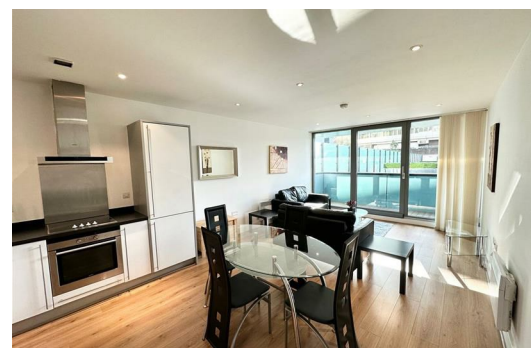
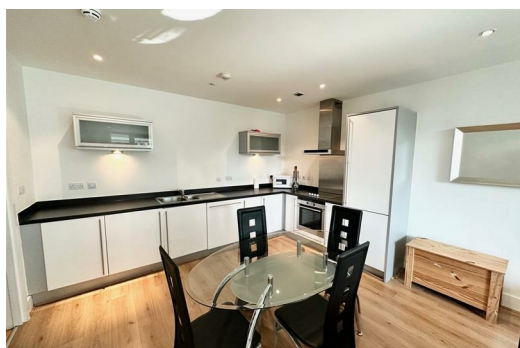
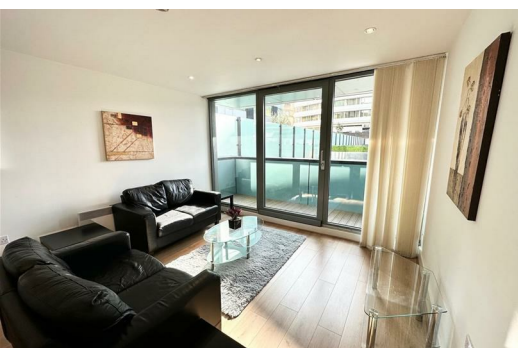
Welcome to the Unity Building, an exquisite apartment located in the vibrant heart of Liverpool. This modern residence boasts a spacious reception room, perfect for entertaining guests or enjoying a quiet evening at home. With two well-appointed bedrooms, this apartment offers ample space for both relaxation and privacy.

The property features two stylish bathrooms, ensuring convenience for both residents and visitors alike. The contemporary design and thoughtful layout make this apartment an ideal choice for those seeking a comfortable urban lifestyle.

Situated in a prime location, residents will benefit from easy access to Liverpool's rich cultural offerings, including shops, restaurants, and entertainment venues. The Unity Building is not just a home; it is a gateway to the dynamic life that Liverpool has to offer.

Parking Available on request (T&C's Apply)

Deposit: £1300
Council Tax: Band C
Lease Length: minimum 12 months



Hallway

wooden flooring, built in storage cupboards

Open Plan Lounge/ Dining Kitchen

Double glazed patio door on to balcony, wooden floor, electric wall heaters, kitchen comprises of a range of fitted wall and base units integrated appliances include fridge / freezer, dishwasher, washer dryer, cooker and hob, extractor hood, furnishings included please see photo

Bedroom 1

Double glazed window, electric wall heater, carpet, fitted wardrobes, furnishings include please see photos

Ensuite Bathroom

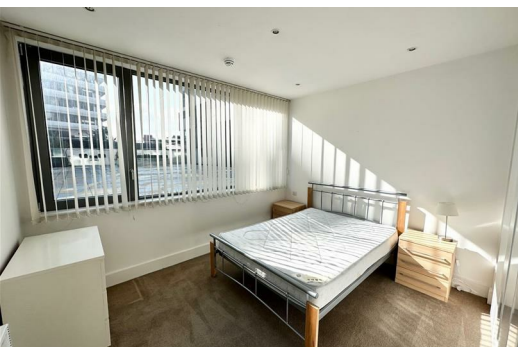
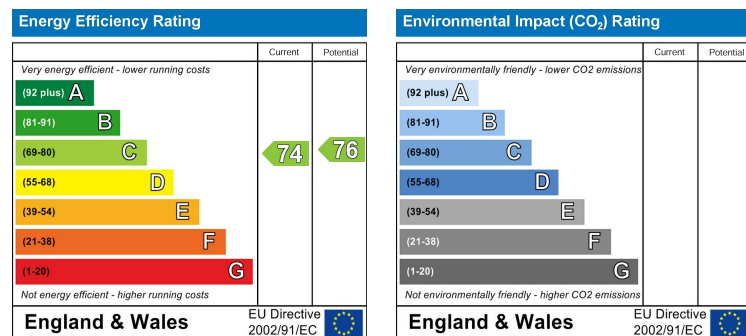
Fully tiled, bath with shower over, sink and low level wc

Bedroom 2

Double glazed window, electric wall heater, carpet, furnishings include please see photos

Shower Room

Fully tiled, walk in shower with shower, sink and low level wc



Berkeley Shaw Estate Agents Limited.
Company No. 0784754

Berkeley Shaw Real Estate Limited.
Company No. 05206927

