



## MARLBOROUGH ROAD, W4

£2,750 pcm

Situated on the second floor with lift access, this unique two-bedroom, two-bathroom apartment features a spacious hallway with extensive storage. Residents enjoy a communal roof terrace and secure underground parking.

- Communal Roof Terrace
- Secure Underground Parking
- Chiswick High Street Nearby
- Flexible Furniture Arrangements

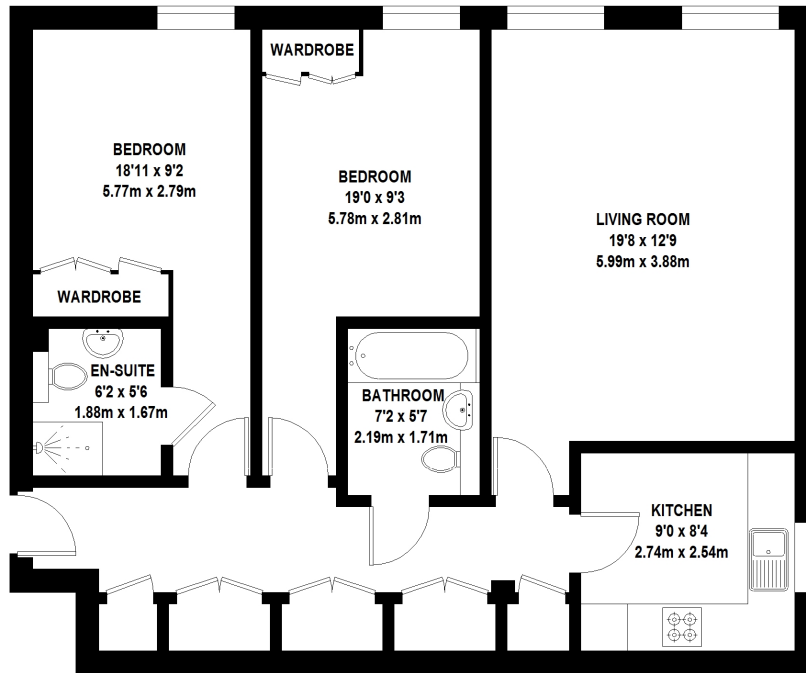


## ABOUT THE HOME

Located moments from Chiswick Park and Gunnersbury Stations, this development offers excellent transport links. The vibrant Chiswick High Street is on your doorstep, providing easy access to renowned shops and cafes.







TOTAL APPROX. FLOOR AREA 836 SQ.FT. (77.68 SQ.M)



Whilst every attempt has been made to ensure the accuracy of the floor plan contained here, measurements of door, windows, rooms and any other items are approximate and no responsibility is taken for any error, omission, or mis-statement. This plan is for illustrative purposes only and should be used as such by any prospective purchaser. The services, systems and appliances shown have not been tested and no guarantee as to their operability or efficiency can be given  
© 2021 (ID745970)

**LiFE RESIDENTIAL**

203 Trentham Court, Victoria  
Road, London, W3 6BT  
Sales: 020 3668 1112  
Lettings: 020 3668 1111

Energy Rating: C. We aim to make our particulars both accurate and reliable. However they are not guaranteed; nor do they form part of an offer or contract. If you require clarification on any points then please contact us, especially if you're traveling some distance to view. Please note that appliances and heating systems have not been tested and therefore no warranties can be given as to their good working order.