



Connells

Icen Way
Dorchester



Property Description

Situated close to the heart of Dorset's county town, lies this two bedroom home. The property comprises two double bedrooms and family bathroom on the first floor. There is a spacious lounge-diner on the ground floor as well as kitchen opening to enclosed courtyard garden. The property is offered to the market with no onward chain.

Ground Floor

Entrance Hall

The front door leads into the entrance hall with a radiator, a door to the lounge / dining room, doorways leading to the conservatory and the kitchen, an understairs cupboard and stairs leading to the first floor.

Lounge / Dining Room

23' 2" x 10' 6" (7.06m x 3.20m)

A door leads from the entrance hall into the lounge / dining room with a double glazed bay window to the front aspect, a radiator, a television aerial socket, a telephone point and a double glazed window looking into the conservatory.

Kitchen

12' x 8' 4" (3.66m x 2.54m)

A doorway leads from the entrance hall into the fitted kitchen with a range of wall and base units with worksurfaces over, a 1 1/2 bowl stainless steel sink and drainer, an electric oven and a gas hob with a cookerhood over, plumbing for a washing machine and a dishwasher, space for a fridge freezer and double glazed windows to the rear and side aspects.

Conservatory

6' 2" x 5' 7" (1.88m x 1.70m)

A doorway opens from the entrance hall into the conservatory which has a double glazed window to the rear aspect and a door leading out onto the rear patio garden.



First Floor

First Floor Landing

Stairs lead up from the ground floor to the first floor landing with a radiator, a double glazed window to the side aspect and doors leading to the bathroom and to bedrooms 1 and 2.

Bedroom 1

14' 1" x 12' 1" (4.29m x 3.68m)

A door leads from the first floor landing into bedroom 1 with a double glazed window to the front aspect, a radiator and a telephone point.

Bedroom 2

12' 5" x 10' 6" (3.78m x 3.20m)

A door leads from the first floor landing into bedroom 2 with a radiator and a double glazed window to the rear aspect.

Bathroom

A door leads from the first floor landing into the part tiled bathroom with a WC, a wash hand basin, a bath, a shower cubicle, an extractor fan, the boiler cupboard and a radiator.

Outside Space

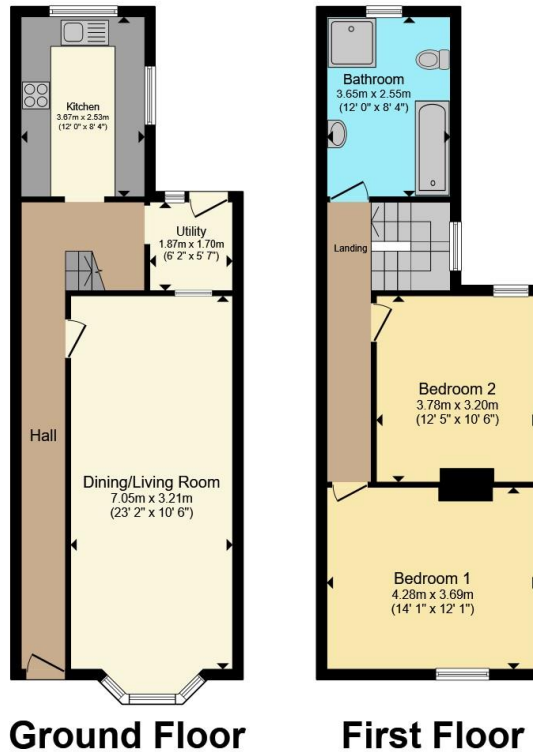
Rear Garden

A door from the conservatory leads out onto the low maintenance rear garden that is laid to a patio allowing ample space for a table and chairs for alfresco dining. The garden further benefits from a garden shed.









Total floor area 97.2 m² (1,046 sq.ft.) approx

This floor plan is for illustrative purposes only. It is not drawn to scale. Any measurements, floor areas (including any total floor area), openings and orientation are approximate. No details are guaranteed, they cannot be relied upon for any purpose and they do not form part of any agreement. No liability is taken for any error, omission or misstatement. A party must rely upon its own inspection(s). Powered by www.propertybox.io

Connells

To view this property please contact Connells on

T 01305 266 755
E Dorchester@connells.co.uk

3 High West Street
 DORCHESTER DT1 1UH

EPC Rating: C Council Tax
 Band: C

Tenure: Freehold

view this property online connells.co.uk/Property/DCH309472



1. MONEY LAUNDERING REGULATIONS Intending purchasers will be asked to produce identification documentation at a later stage and we would ask for your co-operation in order that there will be no delay in agreeing the sale. 2. These particulars do not constitute part or all of an offer or contract. 3. The measurements indicated are supplied for guidance only and as such must be considered incorrect. Potential buyers are advised to recheck measurements before committing to any expense. 4. We have not tested any apparatus, equipment, fixtures, fittings or services and it is in the buyers interest to check the working condition of any appliances.

Connells Residential is registered in England and Wales under company number 1489613, Registered Office is Cumbria House, 16-20 Hockliffe Street, Leighton Buzzard, Bedfordshire, LU7 1GN. VAT Registration Number is 500 2481 05.

See all our properties at www.connells.co.uk | www.rightmove.co.uk | www.zoopla.co.uk

Property Ref: DCH309472 - 0005