



Focus Building, 17 Standish Street, Liverpool, Merseyside L3 2BD

£150,000

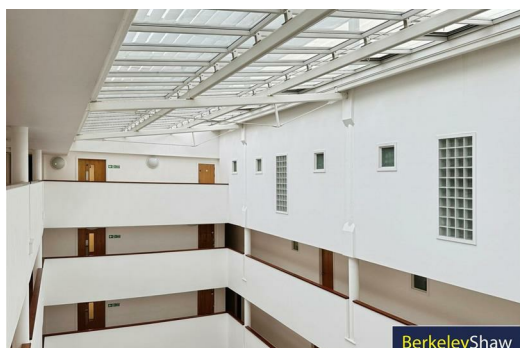
Welcome to this spacious sixth-floor duplex apartment set within the highly sought-after Focus Building in the heart of Liverpool City Centre. Boasting panoramic views across the city skyline, including St John's Beacon and The Anglican Cathedral, this impressive property offers the perfect combination of modern style, convenience, and urban living.

Ideally positioned, the apartment enjoys easy access to Liverpool's excellent amenities, including shops, restaurants, and bars, as well as superb transport links via Moorfields Train Station and Queens Square Bus Station, both just a short walk away.

The development itself provides lift and stair access from the striking communal atrium, along with a concierge service for residents' convenience.

Inside, the apartment comprises an inviting entrance hall, leading to an impressive open-plan kitchen, dining, and living space—perfect for both relaxing and entertaining. The property also features a modern family bathroom and two double bedrooms, with the master bedroom benefiting from an en-suite shower room and access to a private balcony.

Further benefits include electric heating throughout and one allocated parking space.



Communal entrance

Secure access with stairs & lift access to upper floors.

Entrance hall

Bathroom

Open plan kitchen diner/living room

Landing

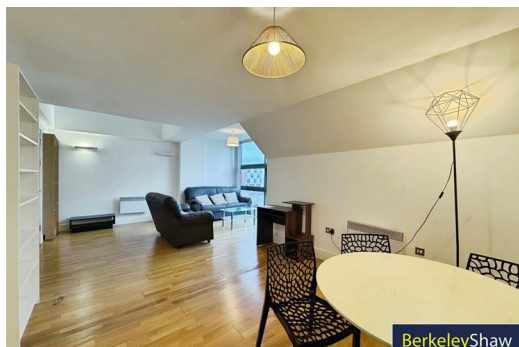
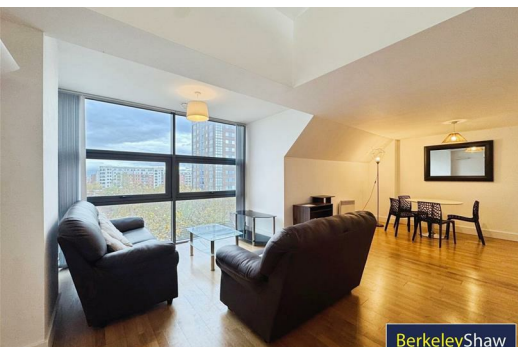
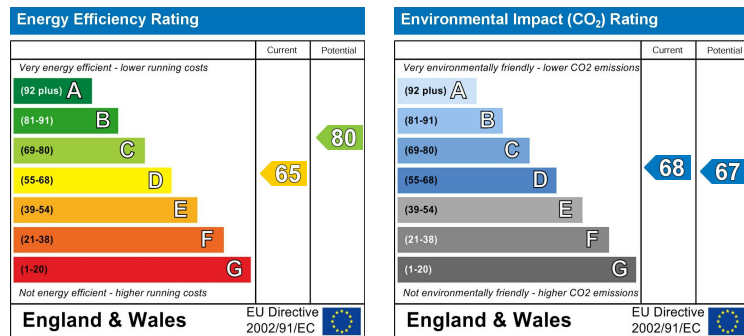
Master bedroom

En-suite

Balcony

Bedroom 2

Externally



Berkeley Shaw Estate Agents Limited.
Company No. 0784754

Berkeley Shaw Real Estate Limited.
Company No. 05206927

