



43 Australian Avenue, Salisbury, Wiltshire, SP2 7JS

£435,000 Freehold

About The Property

A detached bungalow, extended to now provide spacious accommodation with two reception rooms and three bedrooms, all offered in really good condition throughout. It has obviously been well maintained and now benefits from double glazed windows and doors as well as gas central heating by radiators. A further benefit is that it is offered with no onward chain.

To the front of the bungalow is a gravelled driveway which could be enlarged to provide further parking. Beside the drive is a large flower bed with mature shrubs. Gated, side pedestrian access leads to the rear garden.

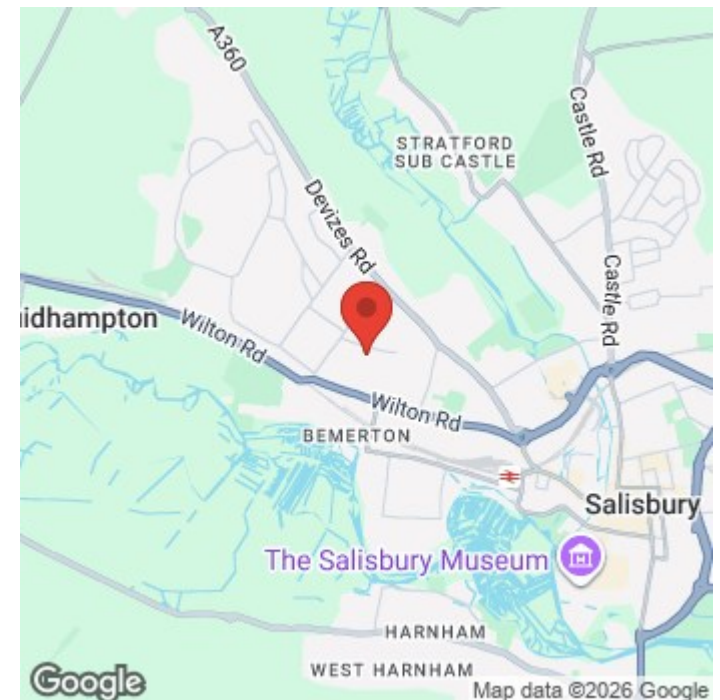
The entrance porch has lighting and a part glazed door into the hall from which doors lead to all main rooms. There is a cloakroom with wc and hand basin and a storage cupboard. To the front elevation are two double bedrooms with bay windows and there is a further single bedroom. The bathroom is a good size with shower cubicle, bath, wc, hand basin and cupboard housing the gas fired boiler. Overlooking the rear garden is the kitchen/breakfast room which has an excellent range of wood effect work surfaces with base and wall mounted cupboards and drawers together with built in fridge and freezer, double oven, gas hob and extractor hood. There is space and plumbing for both washing machine and dishwasher, tiled floor and splashbacks and ceiling downlighters. There is a stable door to the side garden area and a breakfast bar. The dining room is also a good size and this is open to the sitting room, again overlooking the rear garden with double French doors and ornamental fireplace.

Outside there is a storage area and pathway to the front whilst the rear garden has a large paved patio leading to a lawn with flower beds and mature shrubs to sides and rear. Two wooden garden sheds, water tap, power and all enclosed by timber fencing.

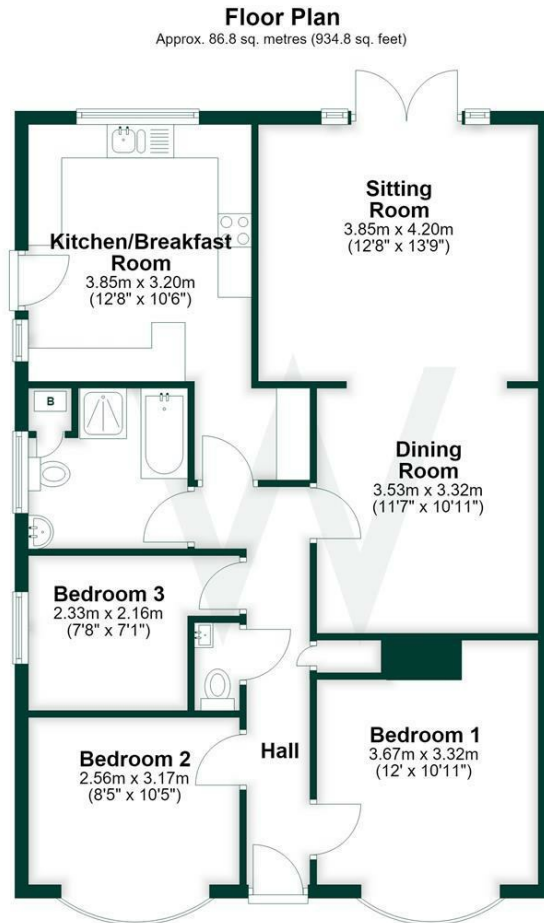
Australian Avenue is located on the western edge of the city within easy reach of amenities on the nearby Wilton Road which includes a general store and bus stops. The city centre is approximately 1 mile away where there are further good amenities including a mainline railway station serving London Waterloo.



- Detached Bungalow
- Three Bedrooms
- Good Sized Sitting Room and Dining Room
- Kitchen/Breakfast Room
- Driveway Parking
- Good Garden
- Gas Central Heating
- Bathroom and Cloakroom
- Double Glazed
- No Onward Chain







Total area: approx. 86.8 sq. metres (934.8 sq. feet)

Further Information

Local authority: Wiltshire Council

Council Tax: D - £2777.59 (2026/2027)

Tenure: Freehold

Services: All main services are connected

Heating: Gas Central Heating by radiators

Directions: Leave Salisbury on the A36 Wilton Road and after approximately a quarter of a mile turn right by the Texaco Garage into Australian Avenue. Proceed up the hill and the property can be found towards the end on the left hand side.

What3words:///family.shades.edge

Energy Efficiency Rating		
	Current	Potential
Very energy efficient - lower running costs		
(92 plus) A		
(81-91) B		
(69-80) C	71	78
(55-68) D		
(39-54) E		
(21-38) F		
(1-20) G		
Not energy efficient - higher running costs		
England & Wales	EU Directive 2002/91/EC	