



## 3 Lanchester Way London

**£850 Per Week**

This stunning two bedroom apartment set within the luxury development Lexington Gardens. Situated in Nine Elms, close to Vauxhall and Nine Elms Stations, this stunning property is conveniently located for transport links to the City.

The property has been finished to the highest standard including underfloor heating, a combination washer / dryer and dishwasher.

Residents also benefit from the 24 hour concierge service, a residents gym and media lounge.

Council Tax Band: Wandsworth - F  
Minimum contract: 12 months  
Change of contract fee: £50 including VAT  
Lift access  
Holding Deposit - £850 (1 weeks rent, subject to agreed offer)

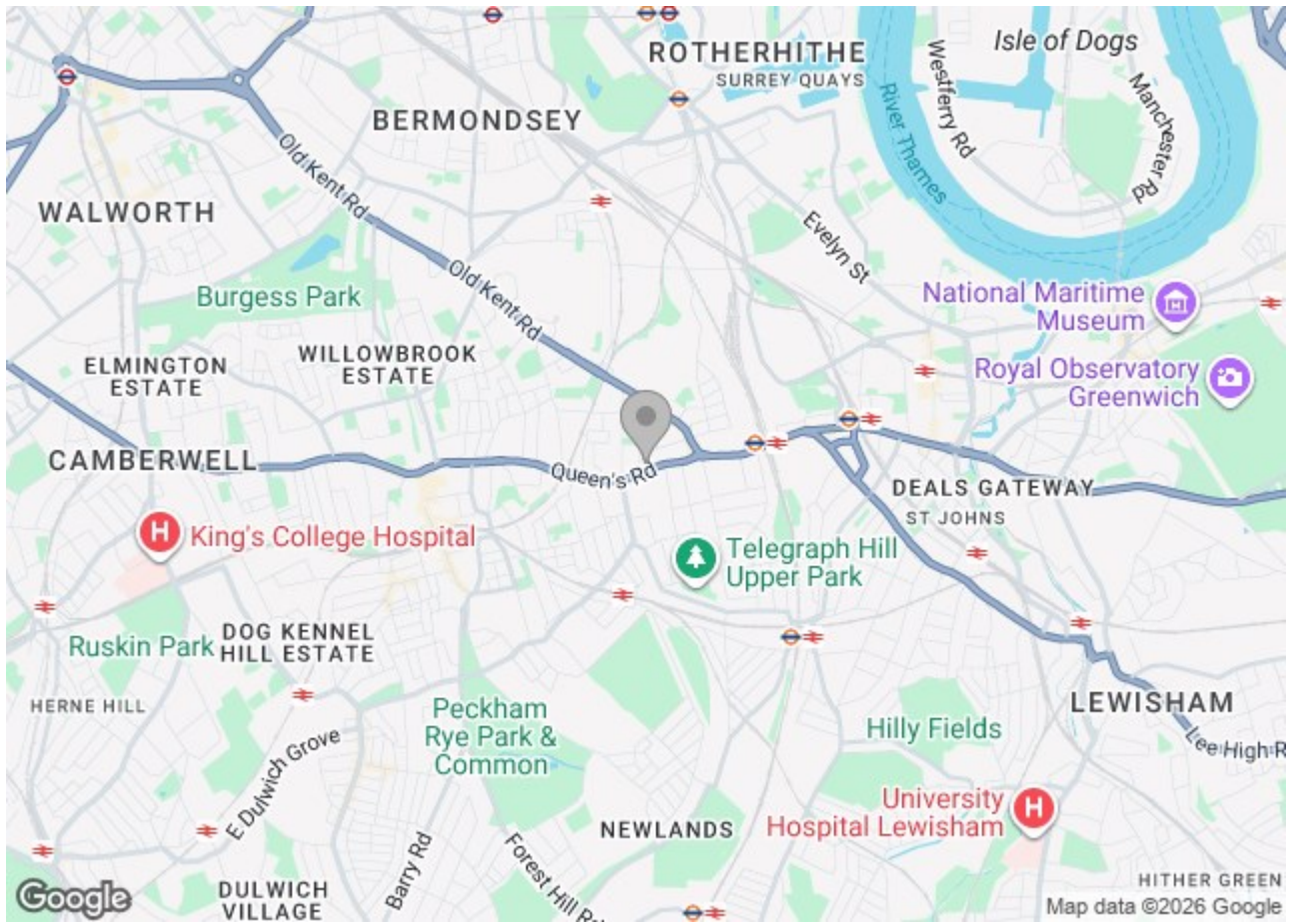
Electricity supply – Mains | Cold Water supply – Mains | Sewerage – Mains | Heating – Communal | Internet: Fibre

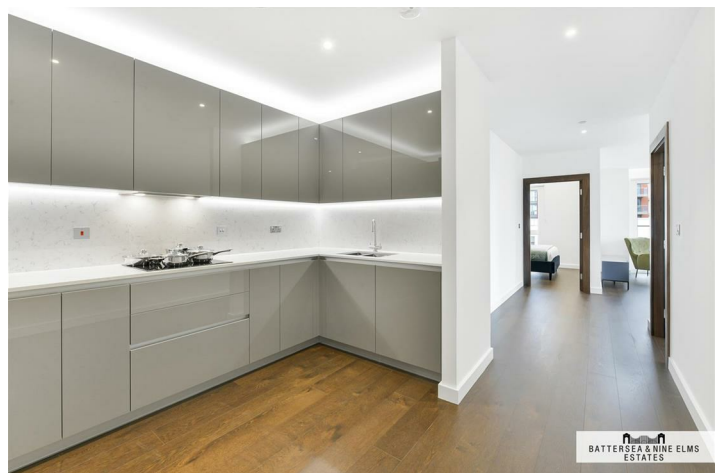
To check broadband and mobile phone coverage please visit Ofcom.  
To check planning permission please visit Wandsworth Council Website, Planning & Building Control

### 3 Lanchester Way London



- 24 Hour concierge
- Residents gym
- Screening room
- Zone 1 transport links





Floor Plan

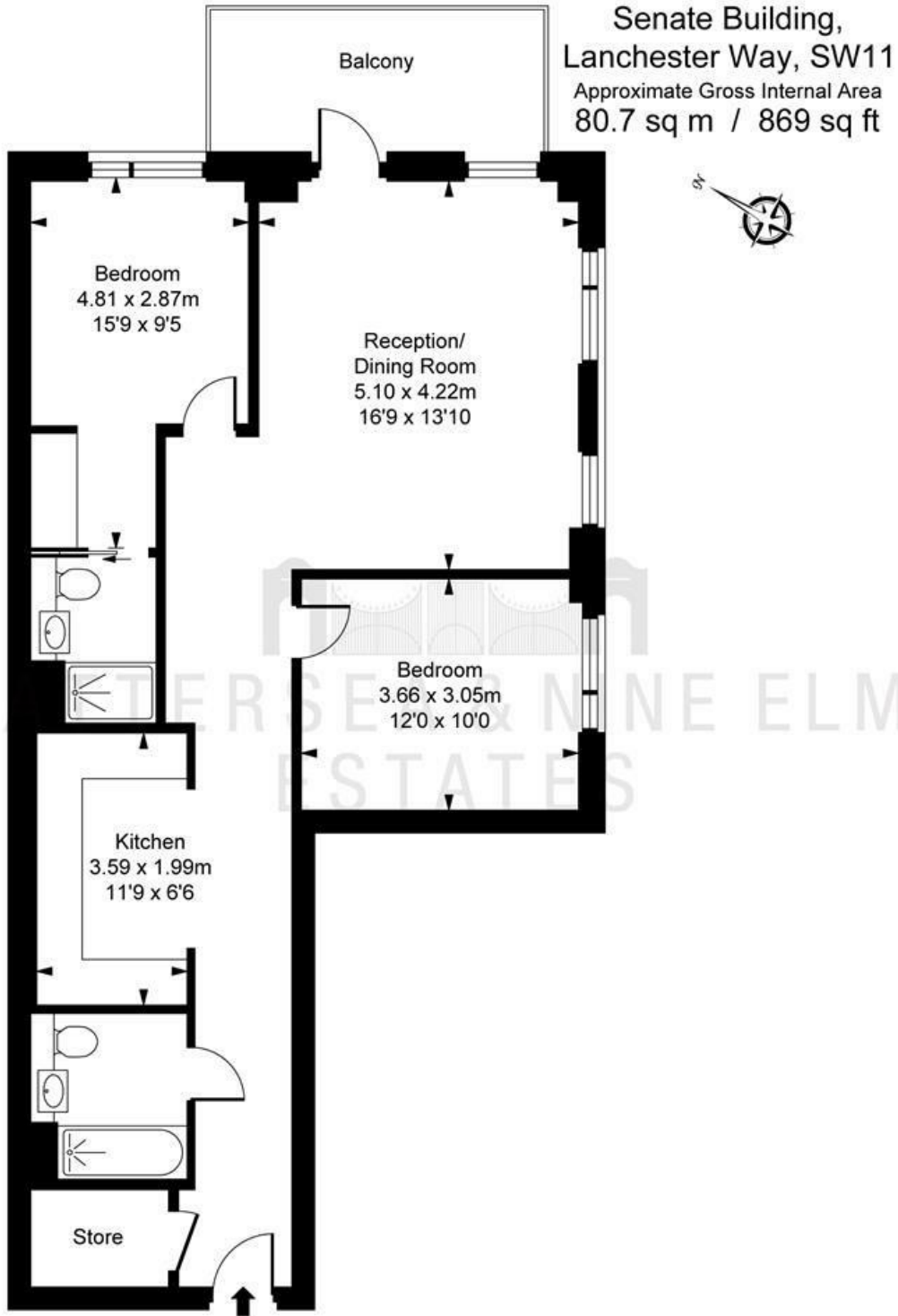


ILLUSTRATION FOR IDENTIFICATION PURPOSES ONLY  
ALL MEASUREMENTS AND AREA FIGURES SUPPLIED BY OTHERS. ACCURACY IS NOT GUARANTEED.  
THIS PLAN MUST NOT BE REPRODUCED BY ANY OTHER PERSON WITHOUT PERMISSION

These particulars, whilst believed to be accurate are set out as a general outline only for guidance and do not constitute any part of an offer or contract. Intending purchasers should not rely on them as statements of representation of fact, but must satisfy themselves by inspection or otherwise as to their accuracy. No person in this firm's employment has the authority to make or give any representation or warranty in respect of the property.

