



Collingham Place
Earls Court, SW5

CHESTERTONS





An incredibly stylish and beautifully presented two-bedroom, two-bathroom duplex apartment arranged over the top two floors of an elegant Victorian building in the heart of Earl's Court.

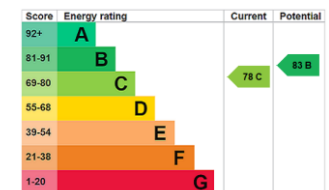
This bright and well-balanced home offers excellent entertaining space, centred around an elegant living room and spacious kitchen dining room, flooded with natural light through large sash windows. The apartment further comprises two generous double bedrooms, two contemporary bathrooms, and excellent built-in storage throughout.

Thoughtfully designed with a modern finish whilst retaining a sense of character and volume, the property enjoys a wonderful feeling of light and space across both floors.

Collingham Place is ideally positioned for the excellent transport links, restaurants and amenities of Earl's Court, Gloucester Road and South Kensington.

- Stylish duplex apartment arranged over the top two floors of an elegant Victorian building
- Bright reception room and spacious kitchen dining room ideal for entertaining
- double bedrooms, two contemporary bathrooms and excellent built-in storage throughout
- Ideally located moments from the amenities and transport links of Earl's Court, Gloucester Road a South Kensington

Asking Price £1,590,000



Tenure: Leasehold 997 years
Service Charge: £4600
Ground Rent: Peppercorn
Local Authority: Royal Borough of Kensington & Chelsea
Council Tax Band: D

Chestertons South Kensington Sales

44-48 Old Brompton Road
 London
 SW7 3DY

southkensington@chestertons.co.uk

020 7589 1234

chestertons.co.uk

Collingham Place, SW5

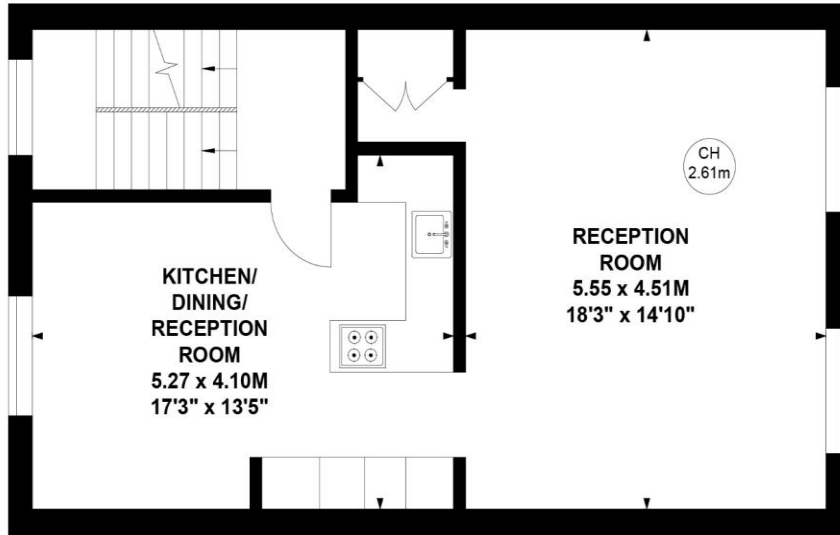
Approximate Gross Internal Area

103.88 sq m / 1118 sq ft

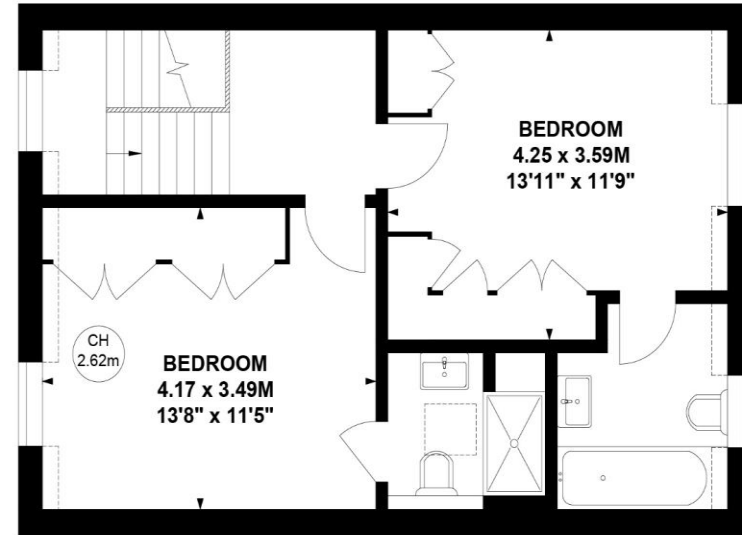


Key :

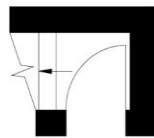
CH - Ceiling Height



Second Floor



Third Floor



First Floor

Not to scale, for guidance only and must not be relied upon as a statement of fact.

All measurements and areas are approximate only

Chesterton UK Services Limited trading as Chestertons for themselves and for the vendor of this property whose agents they are, give notice that (i) these particulars do not constitute any part of an offer or contract, (ii) all statements contained within these particulars are made without responsibility on the part of Chestertons or the vendor, (iii) whilst made in good faith, none of the statements contained within these particulars are to be relied upon as a statement or representation of fact, (iv) any intending purchasers must satisfy themselves by inspection or otherwise as to the correctness of each of the statements contained within these particulars, (v) the vendor does not make or give either Chestertons or any person in their employment any authority to make or give representation or warranty whatsoever in relation to this property. Wide angle lenses may be used. ©Copyright Chestertons | Chesterton UK Services Limited | Registered Office 5th Floor, The Lantern, 75 Hampstead Road, London, NW1 2PL Registered Company Number 05334580.



This paper is
100% recyclable