



Guide Price
£395,000

Freehold

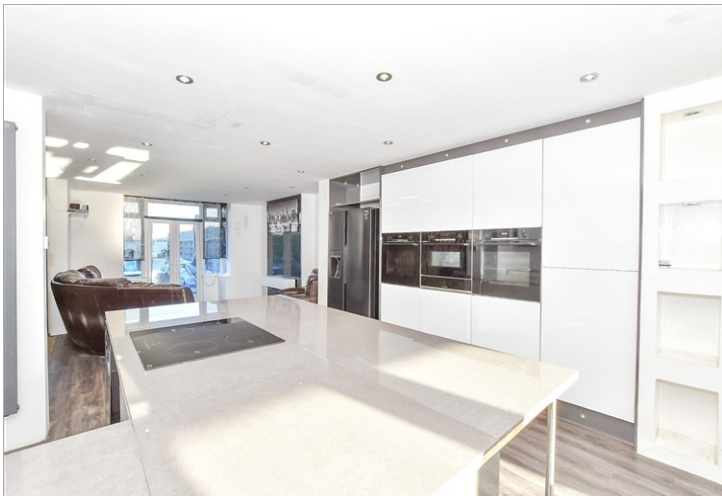
3x  2x  1x 

**Locksway Road, Milton,
Portsmouth, Hampshire,
PO4**

OVER 60?

Secure this property
for up to **59% less!**

cubitt & west
Helping you move forwards



Main features

- No forward chain
- Open plan living area with modern kitchen
- Ample parking for multiple cars
- Front and rear gardens
- Close to local shops, restaurants and transport links

Accommodation

GROUND FLOOR

Entrance Hallway

Lounge Area: 18'4 x 17'3 (5.59m x 5.26m)

Kitchen Area: 15'9 x 8'9 (4.80m x 2.67m)

Dining Area: 12'4 x 10'8 (3.76m x 3.25m)

Shower Room

FIRST FLOOR

Landing

Bedroom 1: 14'3 x 11'9 (4.35m x 3.58m)

Bedroom 2: 12'9 x 11'0 (3.89m x 3.36m)

Bedroom 3: 9'3 x 7'2 (2.82m x 2.19m)

Bathroom

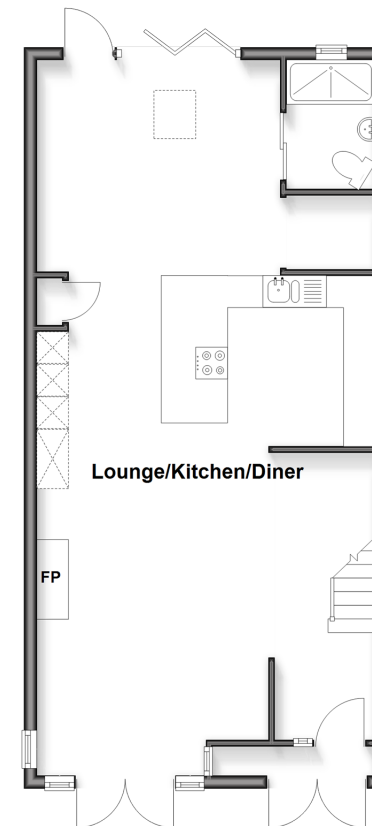
OUTSIDE

Front and Rear Gardens

Driveway

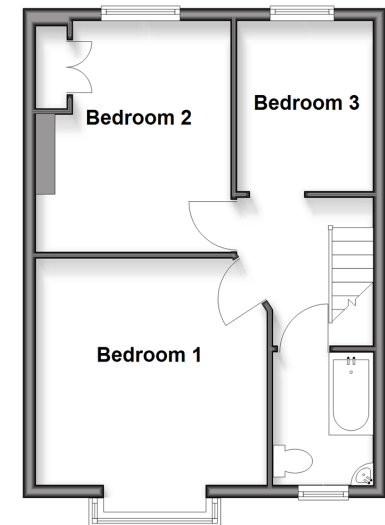
Ground Floor

Approx. 60.0 sq. metres (645.7 sq. feet)



First Floor

Approx. 39.3 sq. metres (422.6 sq. feet)



Call Southsea - 023 9229 6396 ■ cubittandwest.co.uk

■ Through a Homewise Home For Life Plan people aged 60+ can secure this property for up to 59% less, by purchasing a Lifetime Lease



42227617/20260326/JT/MO