



17 Corringham Road, Wembley Park, HA9 9PX

AN EXTREMELY SPACIOUS FIVE DOUBLE BEDROOM, THREE BATHROOM, DETACHED FAMILY HOME We are delighted to bring to the market this large double fronted detached property located on the Barn Hill Estate, boasting a unique position close to Fryent Country Park, offering you quick access to enjoy open spaces for children to play, along with quiet tranquil woodland walks and stunning panoramic views.

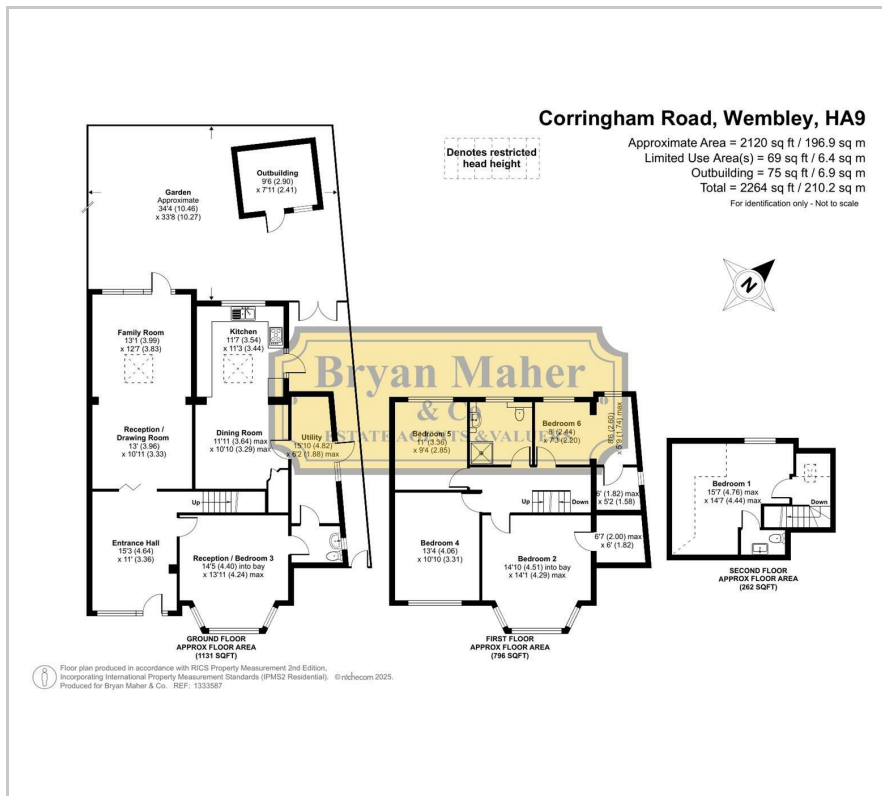
The property briefly comprises of a vast welcoming entrance hallway, a large fitted kitchen/dining room, a through lounge, a front reception room, a separate utility room with a guest cloakroom, five double bedrooms, three bathrooms and a top floor W/C. Externally the front of the property provides off street parking and a manageable garden to the rear.

Wembley Park tube station is within close proximity, providing you with the Metropolitan & Jubilee lines. These are perfect for quick access into London & the surrounding areas.

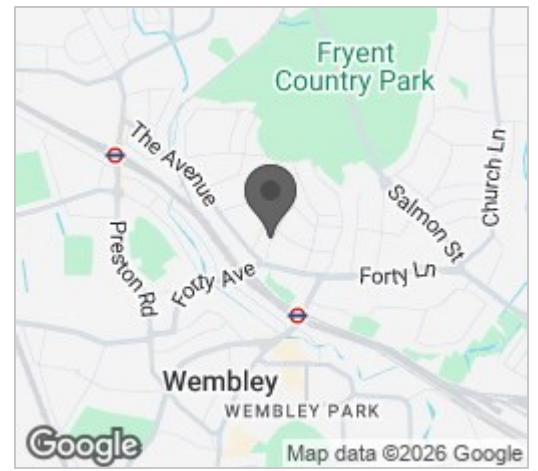
- FIVE DOUBLE BEDROOMS DETACHED FAMILY HOME
- 2264sqft OF SPACIOUS ACCOMODATION
- THREE BATHROOMS
- HUGE WELCOMING ENTRANCE HALL
- LARGE KITCHEN / DINING ROOM
- SPACIOUS THROUGH LOUNGE
- SEPARATE FRONT RECEPTION ROOM
- UTILITY ROOM AND SEPARATE W/C
- SOUGHT AFTER BARN HILL LOCATION
- CLOSE TO THE MET' & JUBILEE LINE TUBE STATION

£899,950

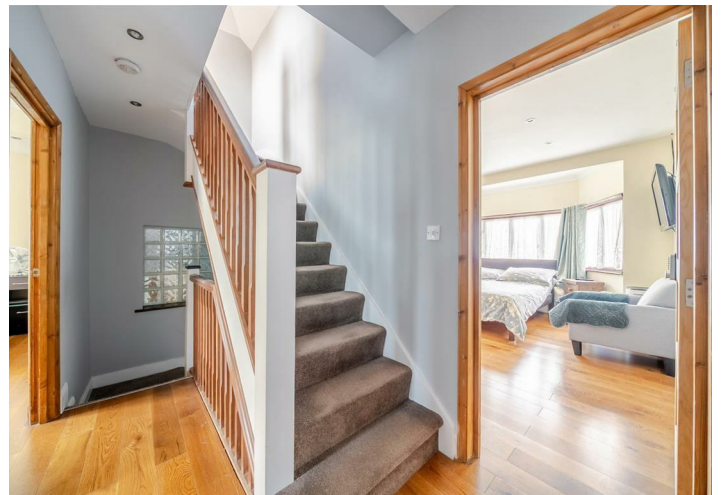
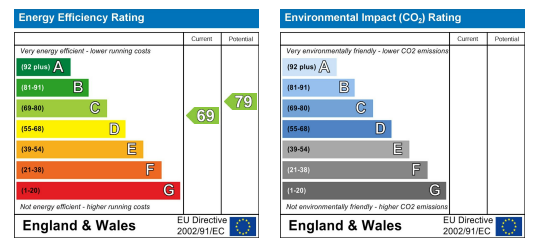
Floor Plan



Area Map



Energy Efficiency Graph



These particulars, whilst believed to be accurate are set out as a general outline only for guidance and do not constitute any part of an offer or contract. Intending purchasers should not rely on them as statements of representation of fact, but must satisfy themselves by inspection or otherwise as to their accuracy. No person in this firm's employment has the authority to make or give any representation or warranty in respect of the property.

