



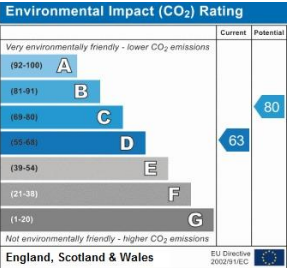
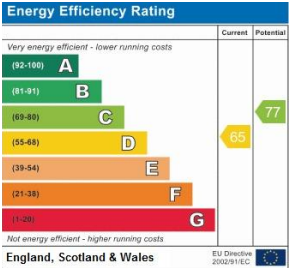
Brigstock House | London | SE5

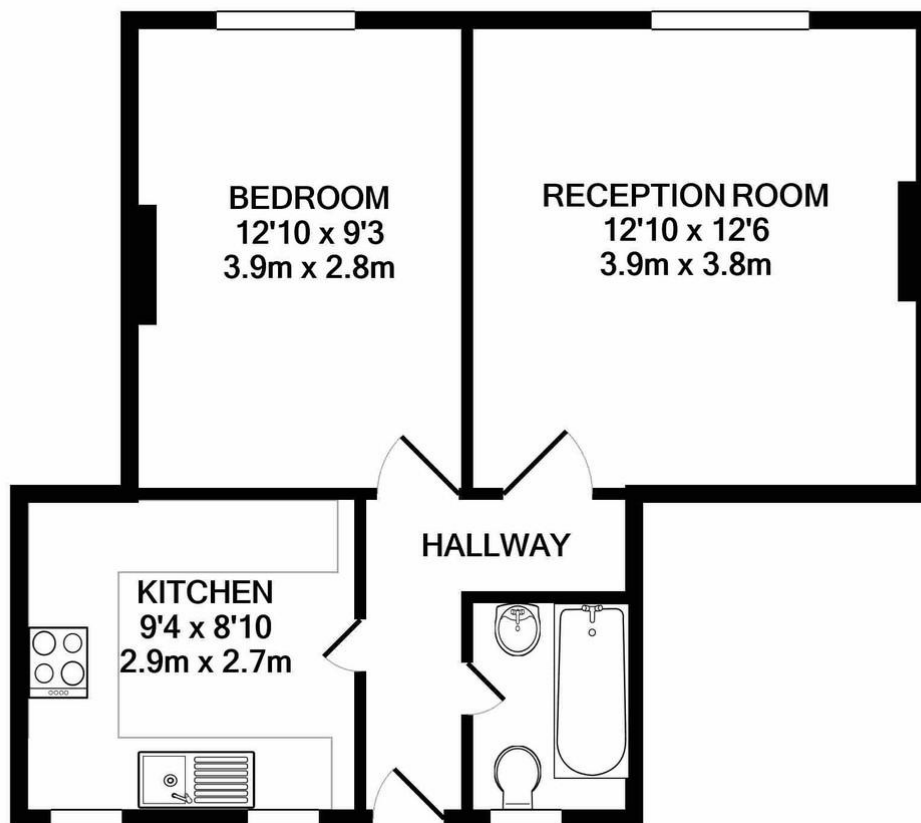
£1,100 pcm

- One Double Bedroom
- Bright And Airy
- Camberwell
- Close to Peckham
- Close to Brixton
- Great Transport Links
- Brixton market POP
- Denmark Hill Station
- Victoria Station in 10 Minutes
- Brixton tube



VIDEO AVAILABLE Urban Village a delighted to bring this bright and spacious, One bedroom flat to the lettings market. Situated walking distance of Denmark Hill Station, Loughborough Junction and Brixton Tube. The apartment boasts a generously sized bedroom, kitchen, separate living area and bathroom. Fantastic place for a couple looking for an easy commute and a cheerful flat. Walking distance to Peckham bars and restaurants and Camberwell Green shops and gastropubs.





TOTAL APPROX. FLOOR AREA 425 SQ.FT. (39.5 SQ.M.)

Whilst every attempt has been made to ensure the accuracy of the floor plan contained here, measurements of doors, windows, rooms and any other items are approximate and no responsibility is taken for any error, omission, or mis-statement. This plan is for illustrative purposes only and should be used as such by any prospective purchaser. The services, systems and appliances shown have not been tested and no guarantee as to their operability or efficiency can be given

Made with Metropix ©2020

Viewing Arrangements

Strictly by appointment

Contact Details

121 Denmark Hill

London

SE5 8EN

www.urbanvillagehomes.co.uk

lettings@urbanvillagehomes.com

020 3519 9121

Agents Note: Whilst every care has been taken to prepare these sales particulars, they are for guidance purposes only. All measurements are approximate are for general guidance purposes only and whilst every care has been taken to ensure their accuracy, they should not be relied upon and potential buyers are advised to recheck the measurements