



10
Vanessa

Littlestairs Road, Shanklin, PO37 6HR

Offers In Region Of £375,000

DANIEL PARR

exp[®] UK

@ daniel.parr@exp.uk.com

🌐 danielparr.exp.uk.com

📞 07414 630 782

Littlestairs Road, Shanklin, PO37 6HR

DP1216

****Fed up of the train set in the lounge? We've got that covered.****

This well-proportioned 3 bedroom bungalow is moments from the lovely Shanklin to Sandown cliff top walk with stunning views over The Channel. You can enjoy the front and rear gardens, good sized lounge and a cosy reading room to watch the world go by. The property also includes a lovely sized loft room, enabling some flexibility with the use of space throughout the home.





Bedroom 1

3m x 3m (9'10" x 9'10")

Front facing UPVC double glazed window to the front with radiator under the window and new carpets.

Lounge

5.97m x 4.06m (19'7" x 13'4")

Front facing wooden doors and windows, with a radiator under. The lounge looks towards the reading room and to the side is a UPVC double glazed window. The carpets have been replaced and there is a feature fireplace.

Reading Room

4.06m x 0.86m (13'4" x 2'9")

Two arched UPVC double glazed windows to the front, the gas meter can be found in this room. A comfortable tucked away spot to enjoy some peace.





Kitchen

4.22m x 2.57m (13'10" x 8'5")

Two double glazed UPVC Windows, one to the rear and one to the side, the UPVC Double glazed back door is located to the side of the kitchen. The kitchen has a range of wall and base units with roll top work surfaces, stainless steel sink and a free-standing cooker. There is a pantry cupboard with an Ideal boiler and plenty of shelf storage space.

Shower Room

2.29m x 1.68m (7'6" x 5'6")

Recently completed shower room with 2 UPVC double glazed windows to the rear, a good-sized walk-in shower, vanity basin unit, low level WC, heated towel rail, and tiled all round.

Bedroom 3

2.69m x 2.08m (8'10" x 6'10")

A comfortable third bedroom or office space. With rear facing UPVC double glazed window



Bedroom 2

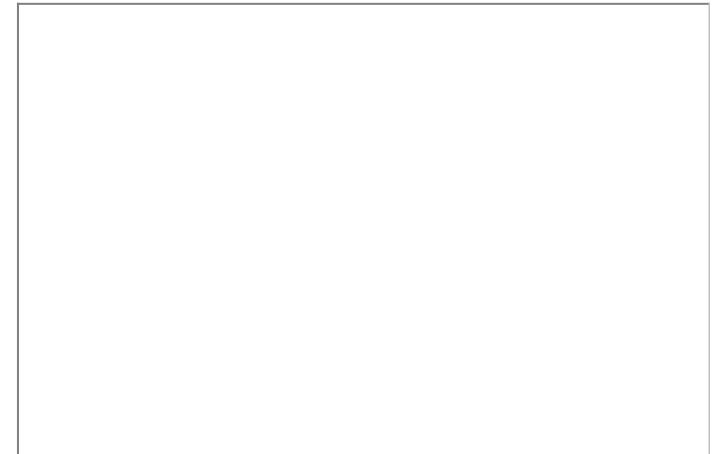
3.02m x 2.72m (9'11" x 8'11")

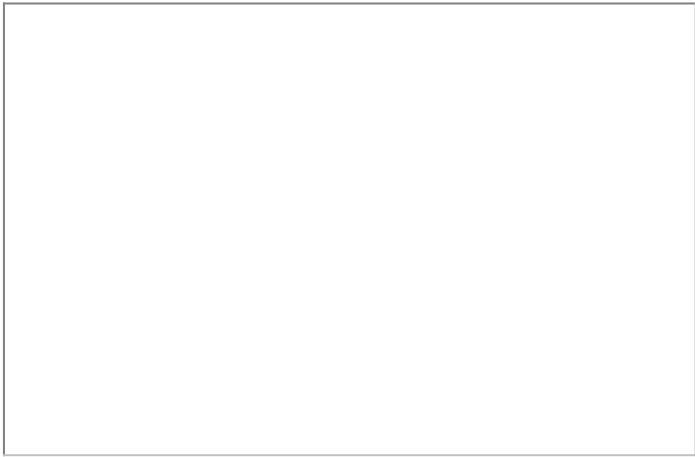
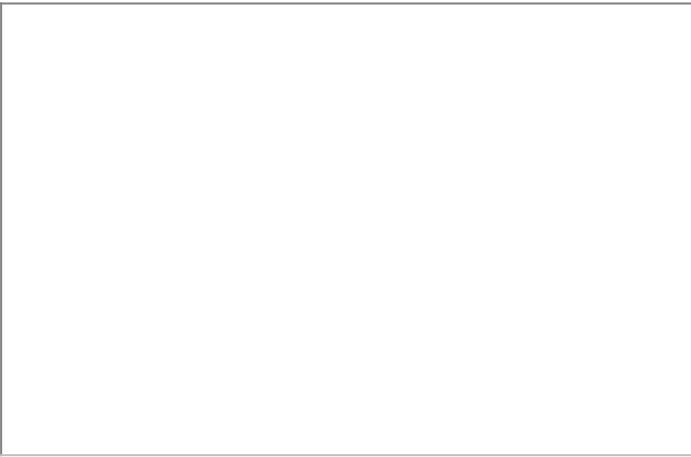
Side facing UPVC double glazed window, with radiator under, and new carpets

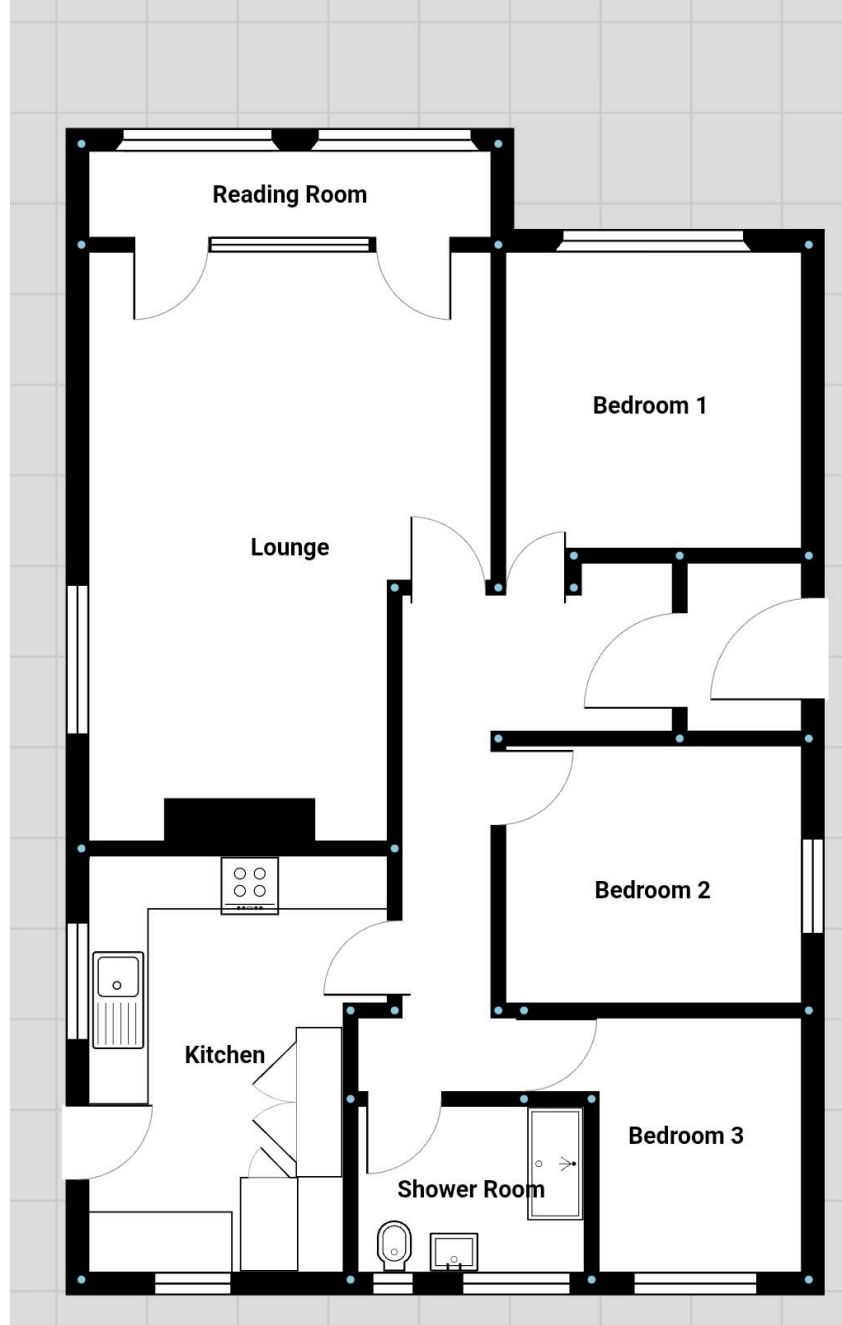
Loft Room

6.91m x 3.78m (22'8" x 12'5")

The loft room is accessed by a pull down ladder in the hallway, the room benefits from a rear facing dormer window and eave storage cupboards.







eXp World UK Ltd is a registered company at Corporation Service Company (UK) Limited, 5 Churchill Place, 10th Floor, London, United Kingdom, E14 5HU. Registered company number is 12016573. VAT Registration Number is 327 4120 29