



St. Luke's Avenue, SW4

£425,000

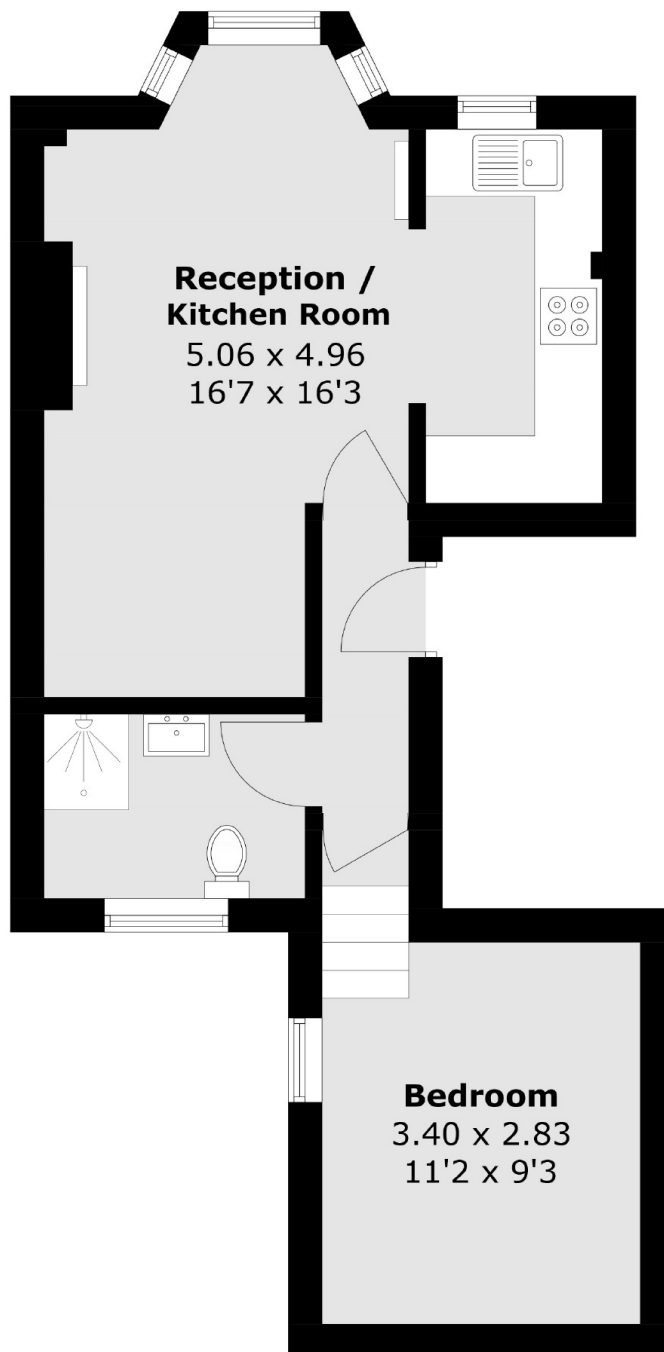
A first-floor period conversion situated in the heart of Clapham. The well-balanced accommodation comprises a spacious reception room with ample room to dine, an adjoining, well-equipped kitchen, a double bedroom and a bathroom. Offered to the market chain free.

St. Luke's Avenue provides excellent access to the shops, bars and restaurants of Clapham High Street and Clapham Old Town. Clapham Common and Clapham North (Northern Line) stations are also close by.

Features

- Period Conversion
- Spacious Reception Room
- Semi-Open Plan Kitchen
- Double Bedroom
- Chain Free

St. Luke's Avenue, London, SW4



Total area (approx.): 39.1 sq. m (420.9 sq. ft)