

£550,000

Moor Road

Nottingham, NG14 6FW

PROPERTY SUMMARY

NO CHAIN

A rare opportunity to acquire this substantial five-bedroom family home occupying a generous plot on the sought-after Moor Road in Calverton, enjoying breathtaking countryside views towards Epperstone and Lowdham.

Offering versatile and spacious accommodation throughout, this impressive home is perfectly suited to growing families seeking both space and a semi-rural outlook. The property boasts exceptionally well-proportioned bedrooms, with five generous double bedrooms arranged across two floors. The principal bedroom benefits from its own en-suite shower room, whilst the remaining accommodation is served by a family bathroom and an additional first-floor bathroom, providing excellent convenience for busy family life.

At the heart of the home are spacious living areas designed for both everyday living and entertaining. A bright conservatory opens onto the rear garden, creating the perfect place to relax and take in the stunning surroundings. Stepping outside, the true appeal of the property becomes clear, with uninterrupted views across open countryside and rolling hills, offering a wonderful sense of peace and privacy rarely found.

Externally, the property occupies an impressive plot with generous outdoor space, ideal for families, gardening enthusiasts or those simply looking to enjoy the idyllic setting. To the front, there is ample off-road parking for

5



3



1





**ASHFORD
& MOULT**
ESTATE AGENTS





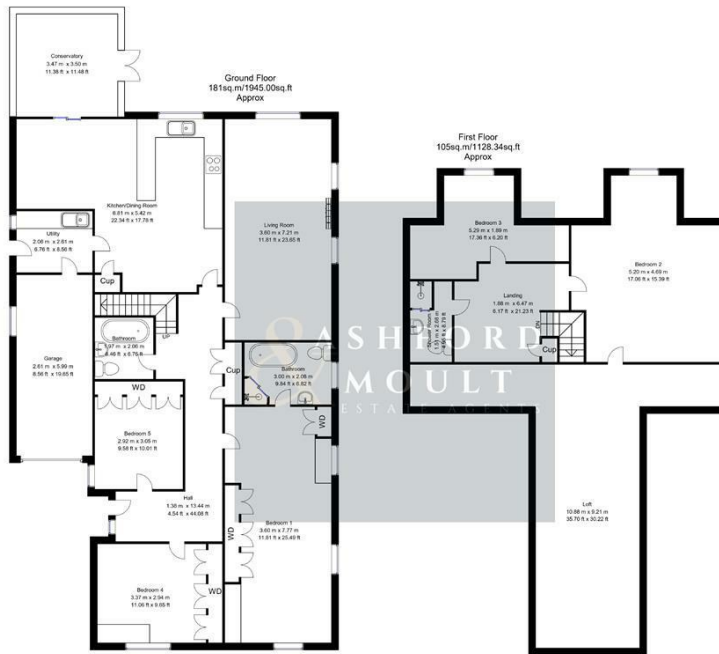
ASHFORD
& MOULT
ESTATE AGENTS

LOCAL AUTHORITY
Gedling Borough Council

TENURE
Freehold

COUNCIL TAX BAND
E

VIEWINGS
By prior appointment only



Energy Efficiency Rating		Current	Potential
Very energy efficient - lower running costs			
(92 plus) A			
(81-91) B			
(69-80) C		75	78
(55-68) D			
(39-54) E			
(21-38) F			
(1-20) G			
Not energy efficient - higher running costs			
England & Wales		EU Directive 2002/91/EC	

Agents Note: Whilst every care has been taken to prepare these particulars, they are for guidance purposes only. All measurements are approximate and are for general guidance purposes only and whilst every care has been taken to ensure their accuracy, they should not be relied upon and potential buyers/tenants are advised to recheck the measurements

Whilst every attempt has been made to ensure the accuracy of the floor plan contained here, no responsibility is taken for incorrect measurements of doors, windows, appliances and room or any error, omission or misstatement. Exterior and interior walls are drawn to scale based on interior measurements. Any figure given is for initial guidance only and should not be relied on as basis of valuation. These plans are for marketing purposes only and should be used as such by any prospective purchase. Specially no guarantee is should not be relied on as a basis of valuation. These plans are for marketing purposes only and should be used as such by any prospective purchase. Specifically no guarantee is given on the total square footage of the property if quoted on this plan.
CC Ltd ©2018



OFFICE ADDRESS

56 Main Street
Calverton
Nottinghamshire
NG14 6FN

OFFICE DETAILS

01158 656675
sales@ashfordandmoulton.co.uk