



Page Street, SW1P | £1,750 Per Month



TUCKERMAN
ESTATE AGENTS
PROPERTY PROFESSIONALS

Page Street, Westminster, SW1P

A well-presented ground floor studio apartment located in the sought-after Westminster area.

Extending to approximately 321 sq ft, the property comprises a bright studio room, fitted kitchen and modern bathroom. The apartment benefits from good storage throughout and is offered furnished. The kitchen and bathroom have both been recently refurbished.

Probyn House is situated on Page Street, conveniently positioned for the shops, cafés and restaurants of Horseferry Road and Victoria Street. Tate Britain, the River Thames, Vincent Square and the Houses of Parliament are all within easy walking distance.

Excellent transport links are available from Pimlico Underground Station, St James's Park Underground Station and Victoria Station.

Council Tax Band: B (Westminster City Council).





Page Street, Westminster, SW1P

Let Agreed

Per Month: £1,750 Per Month


Furnishing: Furnished

Available From: 24th April 2026

Local Authority: Westminster City Council

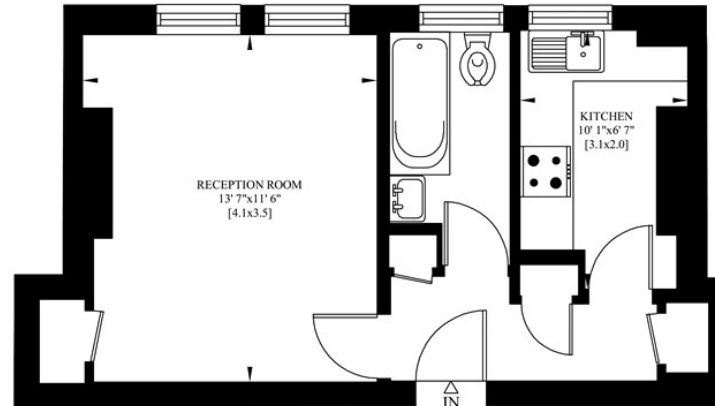
Council Tax Band: B

Approximate Gross Internal Area:
321.00 sq ft

Energy Efficiency Rating		
	Current	Potential
<i>Very energy efficient - lower running costs</i>		
(92 plus) A		
(81-91) B		
(69-80) C	74	78
(55-68) D		
(39-54) E		
(21-38) F		
(1-20) G		
<i>Not energy efficient - higher running costs</i>		
England & Wales	EU Directive 2002/91/EC	

PROBYN HOUSE
PAGE STREET
LONDON SW1

Gross Internal Area: 30 Sq. metres
321 Sq. feet



LOWER GROUND FLOOR

Agents Note: Whilst every care has been taken to prepare these sales particulars, they are for guidance purposes only. All measurements are approximate and for general guidance purposes only and whilst every care has been taken to ensure their accuracy, they should not be relied upon and potential buyers are advised to recheck the measurements

TUCKERMAN
ESTATE AGENTS
PROPERTY PROFESSIONALS

020 7222 5510

info@tuckermanresidential.co.uk
52 Moreton Street, London, SW1V 2PB
www.tuckermanresidential.co.uk