

MUNDAY'S

Lancaster Street, Waterloo

£550,000



Offers in excess of £550,000.

Roomy and chain free one bedroom ground floor flat of 633 square feet within 'Lumiere Court', with its own front door, and a private courtyard rear garden off your open-plan reception/kitchen. The modern building is an attractive low-rise one.

Find your new pad positively encircled by tube and rail stations! Waterloo, Waterloo East, Southwark, Borough and Lambeth North are your closest. You are also easily-walkable to London Bridge, Elephant & Castle and London Blackfriars. Bus and cycle routes are fab, too.

*Munday's Estate Agents Ltd.*  
2 Mary Boast Walk  
London SE5 8SP  
020 3318 8900

[www.mundays.com](http://www.mundays.com)

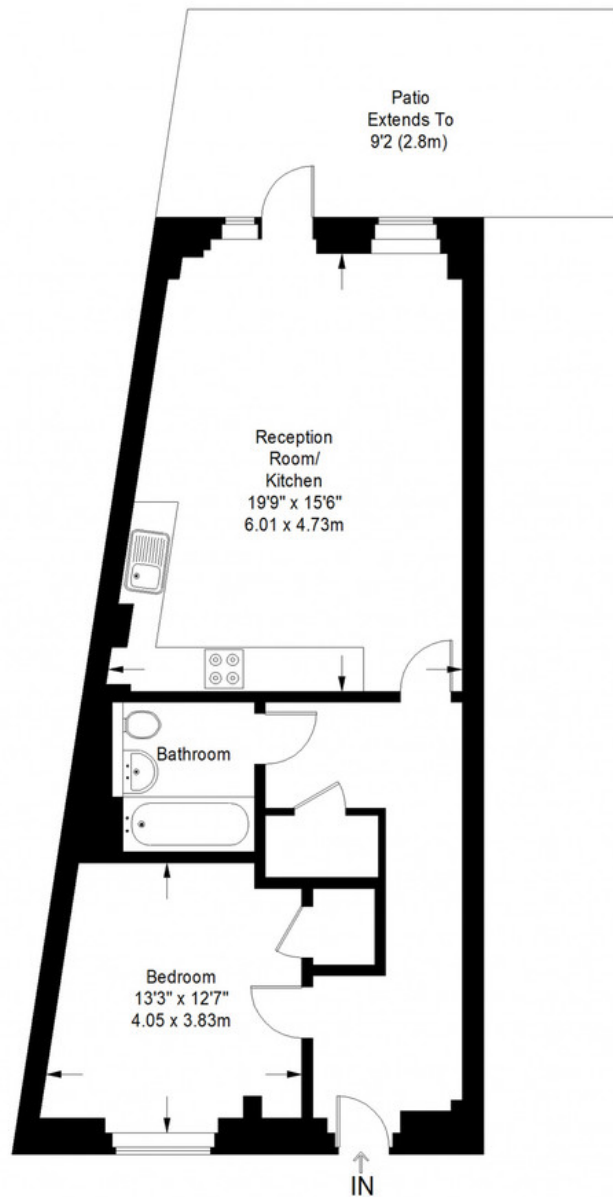
MUNDAY'S



*Munday's Estate Agents Ltd.*  
2 Mary Boast Walk  
London SE5 8SP  
020 3318 8900

[www.mundays.com](http://www.mundays.com)

# MUNDAY'S



**Ground Floor = 633 sq ft**

Approximate Gross Internal Area  
GROUND FLOOR = 633 sq ft / 58.81 sq m  
Total = 633 sq ft / 58.81 sq m



This plan is for layout guidance only. Not drawn to scale unless stated. Windows and door openings are approximate. Whilst every care is taken in the preparation of this plan, please check all dimensions, shapes and compass bearings before making any decisions reliant upon them. (ID357409)

*Munday's Estate Agents Ltd.*  
2 Mary Boast Walk  
London SE5 8SP  
020 3318 8900

[www.mundays.com](http://www.mundays.com)