



**Connells**

Broomfield  
Stacey Bushes MILTON KEYNES



## Property Description

Situated in the popular residential area of Stacey Bushes, just a few minutes from Stony Stratford, this well-proportioned four-bedroom detached property offers generous family living space in a highly convenient location.

The accommodation briefly comprises a welcoming entrance leading into a spacious living room, flowing through to a separate dining room-ideal for entertaining. The dining area provides access to a well-appointed kitchen, with the added benefit of a downstairs cloakroom.

Upstairs, the property offers four bedrooms, including two good-sized double bedrooms and two comfortable single rooms, along with a family bathroom.

Externally, the home boasts a generous rear garden, perfect for families and outdoor enjoyment. To the front, there is a driveway providing off-road parking and access to a separate garage.

Stacey Bushes is ideally positioned close to Stony Stratford, offering a range of shops, cafés, and local amenities. The property also benefits from excellent transport links, with easy access to rail services and major road networks.

This is a fantastic opportunity to acquire a spacious and well-located family home-early viewing is highly recommended.

## Entrance Hall

Doors to accommodation, stairs raising to first floor. Tiled flooring. Large Storage cupboard

under the stairs with plumbing for washing machine.

## Cloakroom

WC, Sink and window to side aspect.

## Living Room

Bright and airy separate living space with window to rear aspect.

## Kitchen

Range of wall and base units, sink and drainer, space for appliances and integrated extractor fan. Window to front aspect and opening through into dining room.

## Dining Room

Conveniently located off the kitchen, bright dining space with patio doors opening in to the rear garden.

## Upstairs

## Landing

Doors to accommodation, storage cupboard and access to the loft.

## Bedroom One

Window to Side aspect

## Bedroom Two

Window to Side aspect.

## Bedroom Three

Window to Side aspect. Single bedroom

## Bedroom Four

Window to Side aspect. Ideal single bedroom, nursery or office space.

## Outside

## Rear Garden

Mainly laid to lawn with patio area. Wooden garden shed, sun canopy and side access to the driveway and garage.

## Garage

Up and over garage door

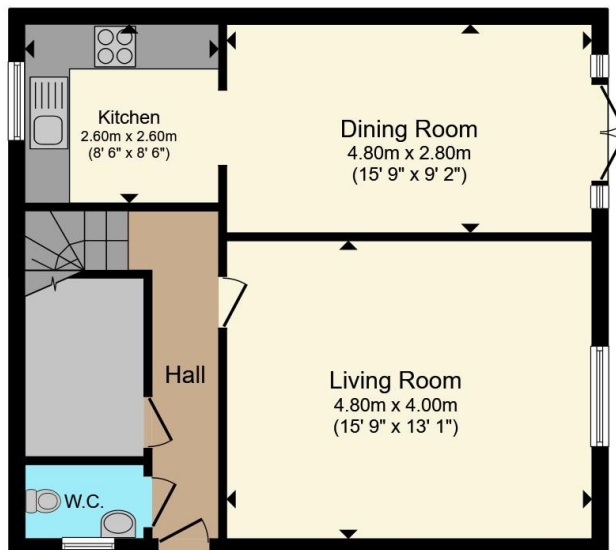
## Parking

Driveway to the front of the property.

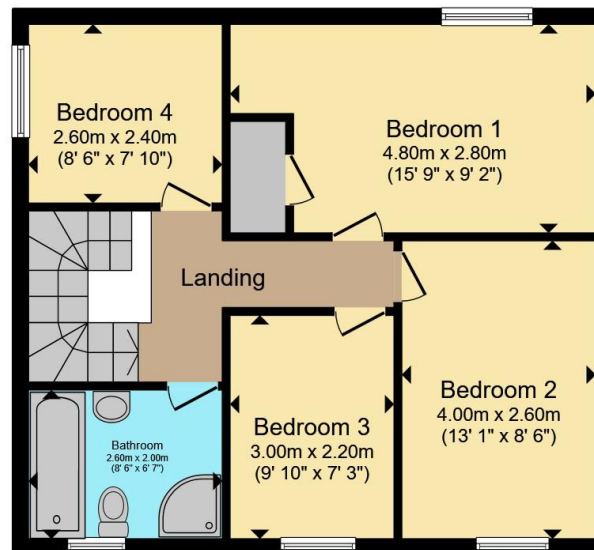








**Ground Floor**



**First Floor**

Total floor area 104.9 m<sup>2</sup> (1,129 sq.ft.) approx

This floor plan is for illustrative purposes only. It is not drawn to scale. Any measurements, floor areas (including any total floor area), openings and orientation are approximate. No details are guaranteed, they cannot be relied upon for any purpose and they do not form part of any agreement. No liability is taken for any error, omission or misstatement. A party must rely upon its own inspection(s). Powered by [www.propertybox.io](http://www.propertybox.io)



To view this property please contact Connells on

**T 01908 563 993**  
**E [stonystratford@connells.co.uk](mailto:stonystratford@connells.co.uk)**

82 High Street Stony Stratford  
 MILTON KEYNES MK11 1AH

EPC Rating: C Council Tax  
 Band: C

Tenure: Freehold

**[check out more properties at connells.co.uk](http://connells.co.uk)**



1. MONEY LAUNDERING REGULATIONS Intending purchasers will be asked to produce identification documentation at a later stage and we would ask for your co-operation in order that there will be no delay in agreeing the sale. 2. These particulars do not constitute part or all of an offer or contract. 3. The measurements indicated are supplied for guidance only and as such must be considered incorrect. Potential buyers are advised to recheck measurements before committing to any expense. 4. We have not tested any apparatus, equipment, fixtures, fittings or services and it is in the buyers interest to check the working condition of any appliances.

Connells Residential is registered in England and Wales under company number 1489613, Registered Office is Cumbria House, 16-20 Hockliffe Street, Leighton Buzzard, Bedfordshire, LU7 1GN. VAT Registration Number is 500 2481 05.

**See all our properties at [www.connells.co.uk](http://www.connells.co.uk) | [www.rightmove.co.uk](http://www.rightmove.co.uk) | [www.zoopla.co.uk](http://www.zoopla.co.uk)**

Property Ref: SSD307781 - 0003