



8 Park Grove, Knotty Green - HP9 2EN
£325,000





8 Park Grove

Knotty Green, Beaconsfield

- Top Floor
- Allocated Parking
- No Through Road Location
- Modern Apartment
- Long Lease
- Great First Time Buy or Investment

Beaconsfield New Town is located around 1 mile away, with a mainline train station providing a 30 minute train service to London Marylebone. The New Town area is also home to a fine selection of shops including Waitrose, Sainsbury's and M&S amongst many others, aswell a large number of popular coffee shops and restaurants. Beaconsfield Old Town completes the area, with a further selection of amenities including a bi-weekly farmers' market and an annual Chartered Fair.



8 Park Grove

Knotty Green, Beaconsfield

Fantstic top floor one bedroom apartment in a prestigious gated development. Incredibly well sized property with well manicured communal gardens and underground allocated parking.

This oversized one bedroom apartment is situated on the top floor of this small development within a gated community in Knotty Green.

With open plan living space to the kitchen this bright and airy space is flexible with room for dining, lounge and study space. The bedroom is generous with lots of storage, the bathroom is modern and of a good size.

Underground allocated parking with well manicured communal gardens.

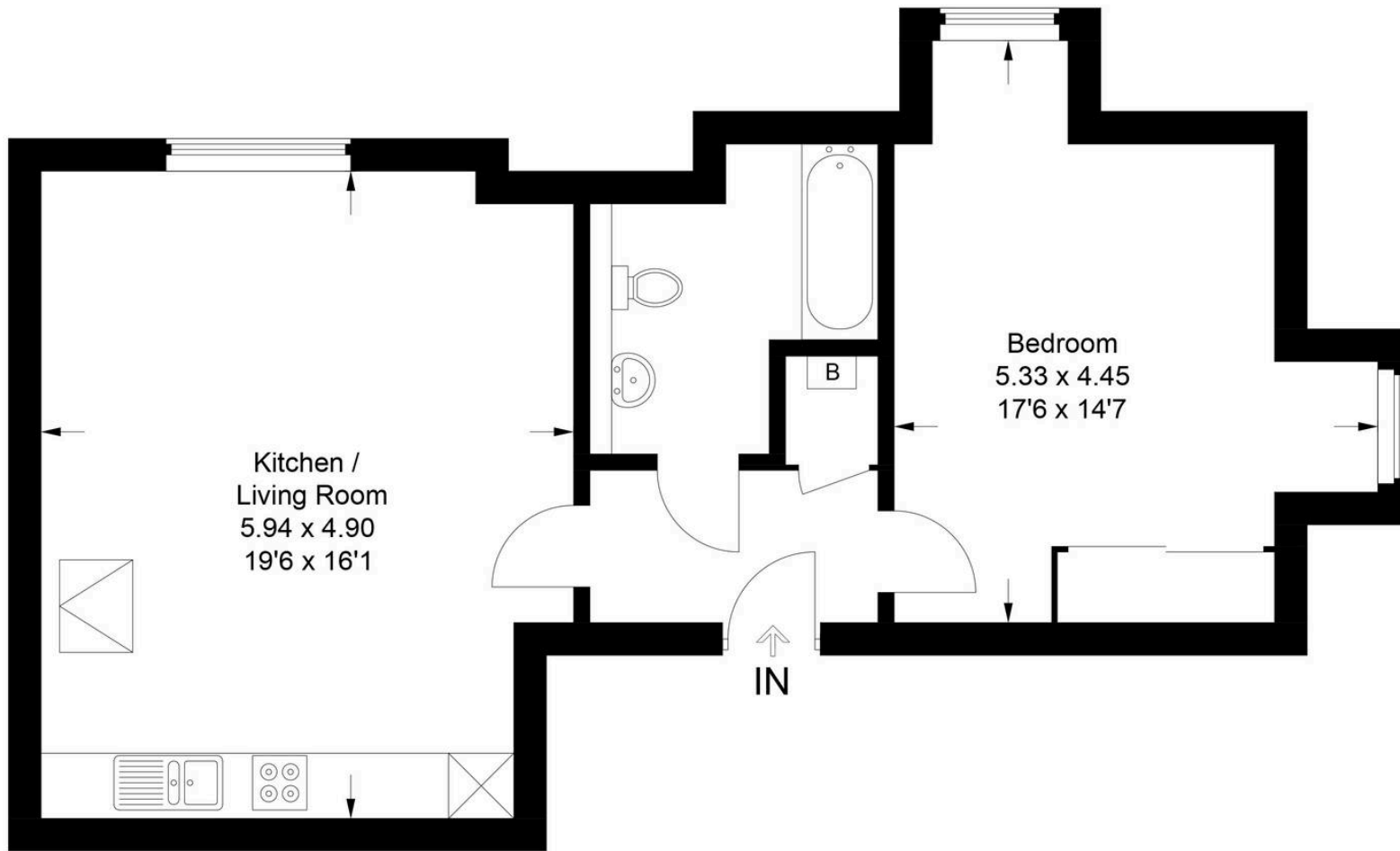
Council Tax band: D

Tenure: Leasehold

EPC Energy Efficiency Rating: C

EPC Environmental Impact Rating: B





Second Floor

8 Park Grove

Approximate Gross Internal Area = 58.0 sq m / 624 sq ft

This plan is for layout guidance only. Not drawn to scale unless stated. Windows and door openings are approximate. Whilst every care is taken in the preparation of this plan, please check all dimensions, shapes and compass bearings before making any decisions reliant upon them.

© CJ Property Marketing Ltd Produced for Tim Russ & Company



Tim Russ and Company

Tim Russ & Co, 6 Burkes Court Burkes Road - HP9 1NZ

01494 674321 • Beaconsfield@timruss.co.uk • timruss.co.uk/

