



Woodland Court, Dyke Road Avenue, Hove, BN3 6DQ
£350,000



**GOLDIN
LEMCKE**

01273 777123
GOLDINLEMCKE.COM

SELLING HOMES
IN BRIGHTON
& HOVE
SINCE 2002

Woodland Court, Dyke Road Avenue, Hove, BN3 6DQ

£350,000

A bright and spacious three-bedroom flat, occupying part of the second (top) floor of this sought-after purpose-built block. The property greatly benefits from stunning distant sea views, garage (only suitable for storage), and no onward chain.



GOLDINLEMCKE





Further Information

The accommodation comprises an excellent sized living/dining room, three double bedrooms, bathroom, separate WC and modern fitted kitchen. The flat benefits from lovely distant sea views, gas central heating, double glazed windows, communal bike store, large storage room in basement and garage - only suitable for storage as its not big enough to house a car.

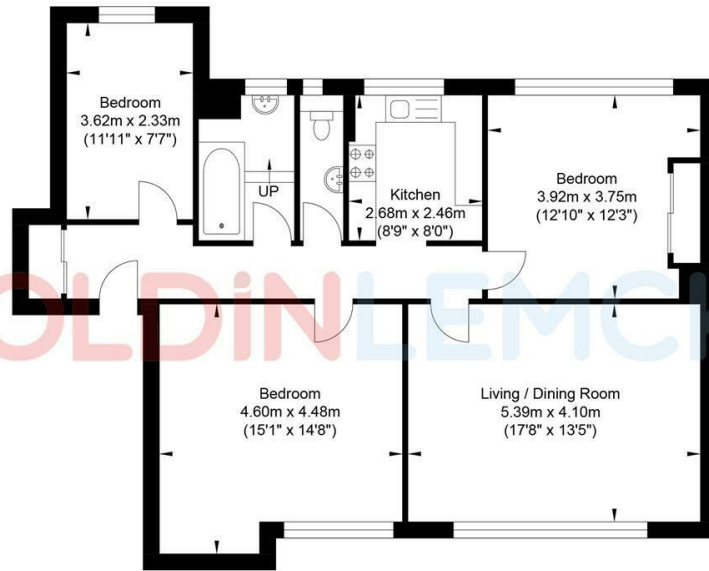
Woodland Court sits in a convenient spot on Dyke Road Avenue, giving you easy access in and out of the city while still being close to Hove's cafes, shops, and green spaces. The A27 and local bus routes are nearby for simple commuting, and local amenities are just a short distance away. It's a great location for anyone who wants a quieter residential feel without being far from everything you need day to day.



GOLDINLEMCKE

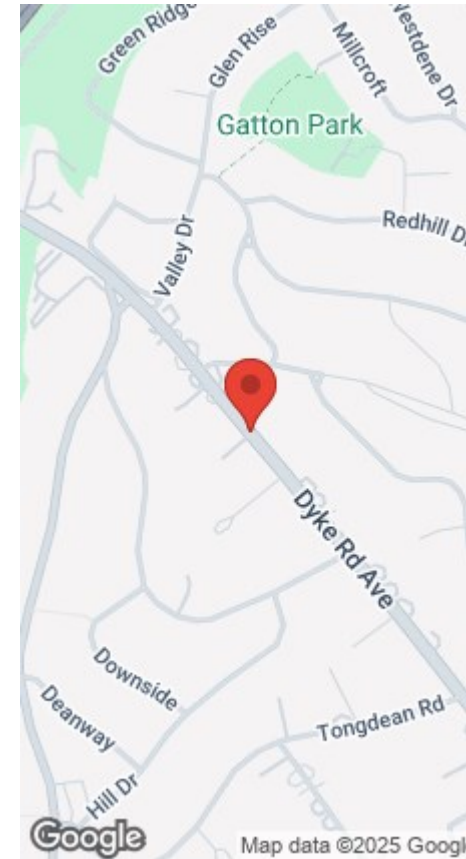
01273 777123
GOLDINLEMCKE.COM

Dyke Road Avenue



Second Floor Flat
Approximate Floor Area
967.89 sq ft
(89.92 sq m)

Approximate Gross Internal Area = 89.92 sq m / 967.89 sq ft
Illustration for identification purposes only, measurements are approximate, not to scale.



GOLDIN LEMCKE

01273 777123
GOLDINLEMCKE.COM

SELLING SOMETHING SIMILAR?

Get in touch for a free, no obligation valuation.

Call 01273 777123 or email property@goldinlemcke.com

The above information has been provided by the vendor in good faith, but will need verification by the purchaser's solicitor. Any areas, measurements or distances referred to are given as a guide only and are not precise. Floor plans are not drawn to scale and are provided only to help illustrate the general layout of the property. The mention of any appliances and/or services in this description does not imply that they are in full and efficient working order and prospective purchasers should make their own investigations before finalising any agreement to purchase. It should not be assumed that any contents, furnishings or other items shown in photographs (which may have been taken with a wide angle lens) are included in the sale. Any reference to alterations to, or use of, any part of the property is not a statement that the necessary planning, building regulations, listed buildings or other consents have been obtained. We endeavour to make our details accurate and reliable, but they should not be relied on as statements or representations of fact and they do not constitute any part of an offer or contract. The seller does not give any warranty in relation to the property and we have no authority to do so on their behalf.

Energy Efficiency Rating		Current	Potential
Very energy efficient - lower running costs			
(92 plus) A			
(81-91) B			
(69-80) C			
(55-68) D		66	79
(39-54) E			
(21-38) F			
(1-20) G			
Not energy efficient - higher running costs			
England & Wales		EU Directive 2002/91/EC	

SELLING HOMES
IN BRIGHTON
& HOVE
SINCE 2002