



Fiador Apartments, 21 Telegraph Avenue, Greenwich SE10 0TH



## Fiador Apartments, Greenwich SE10

### Leasehold

Offering views over the River Thames from every room, this stunning 1st floor apartment comes to market in the ever popular Enderby Wharf development. Boasting access to concierge services, and a residents only gym

### Key Features

- 2 Double bedrooms, 2 Bathrooms
- 2 Balconies
- Stunning river views
- Council Tax: **D**
- Service Charge: **£3,058.50**
- Ground Rent: **£622.74**
- Excellent transport links
- EPC: **B**

The accommodation comprises; a large entrance hallway with ample storage cupboards and a utility cupboard. The reception room / kitchen is a generous size at (19'6 x 15'3) having been decorated in neutral tones throughout. The kitchen has been thoughtfully arranged with an array of eye and base level units and integrated appliances and finished with high-quality worksurfaces. From the reception room is the large balcony, offering unparalleled views over the River Thames, Canary Wharf & The City, perfect for sitting out with friends, enjoying a drink in the evenings.

Both bedrooms are also situated at the front of the property, meaning all rooms share the same impressive views. The main bedroom is a large double room at 13'0 x 11'6 benefitting from access onto its own private balcony, built-in wardrobes and en-suite shower room. The second bedroom is also a large double room benefits from built in wardrobes and access onto the same balcony as the reception room. A beautiful family bathroom finishes off the property.



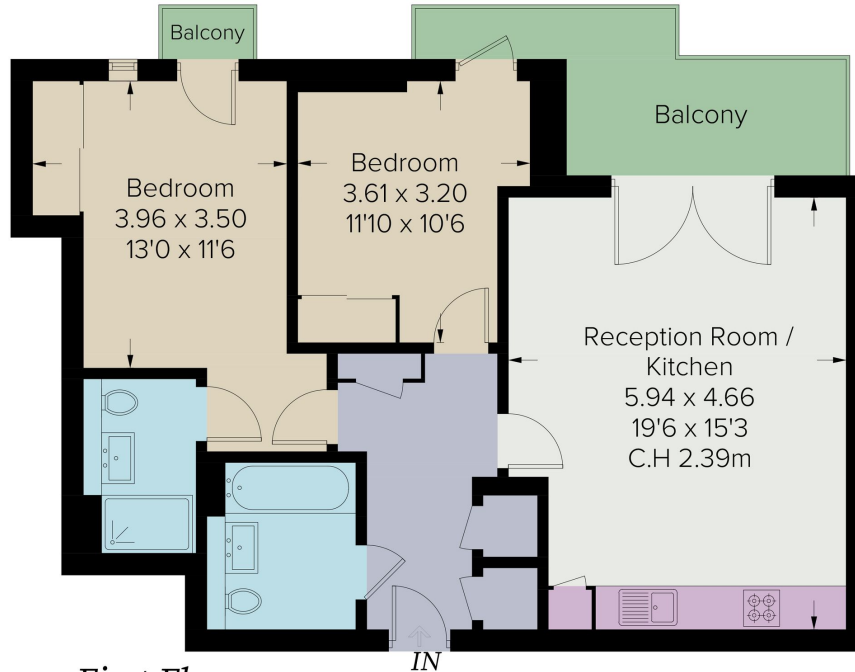






# Fiador Apartments

Approximate Gross Internal Area = 72.3 sq m / 778 sq ft



*First Floor*

Illustration for identification purposes only, measurements are approximate, not to scale. Fourlabs.co © (ID1206760)

22 College Approach, Greenwich,  
London, SE10 9HY  
Tel: 020 7399 5595

**Sales, Lettings & Property Management**

[residential.jll.co.uk](http://residential.jll.co.uk)

