

Thatches Mill Street

Harlow, Harlow

Surrounded by beautiful Essex countryside, welcome to Thatches. Steeped in over 300 years of history with its gated driveway, five bedrooms and three bathrooms, this is a stand-out family home. Council Tax band: F

Tenure: Freehold

- Five Bedroom Period Home
- Character Features
- Gated Driveway
- Three Bathrooms
- Garage & Outbuilding
- Short drive to M11



Entrance Porch

Living Room

20' 7" x 14' 5" (6.27m x 4.40m)

Living Room

13' 0" x 19' 11" (3.97m x 6.07m)

Kitchen / Diner

15' 6" x 14' 11" (4.72m x 4.55m)

Utility Room

14' 0" x 8' 4" (4.27m x 2.54m)

WC

Conservatory

7' 3" x 20' 0" (2.20m x 6.10m)

Primary Bedroom

16' 10" x 14' 2" (5.12m x 4.32m)

Ensuite Shower Room

Bedroom

11' 5" x 13' 9" (3.48m x 4.20m)

Bedroom

9' 1" x 11' 9" (2.77m x 3.59m)

Bedroom

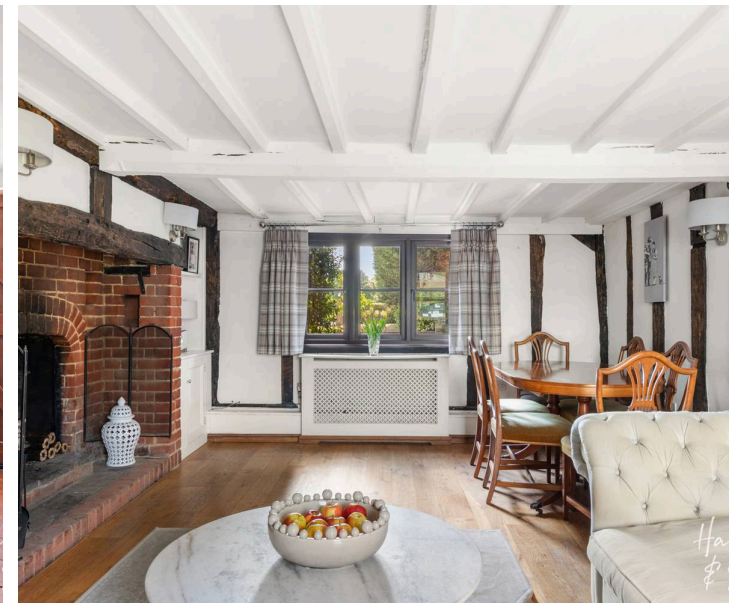
8' 10" x 11' 9" (2.70m x 3.59m)

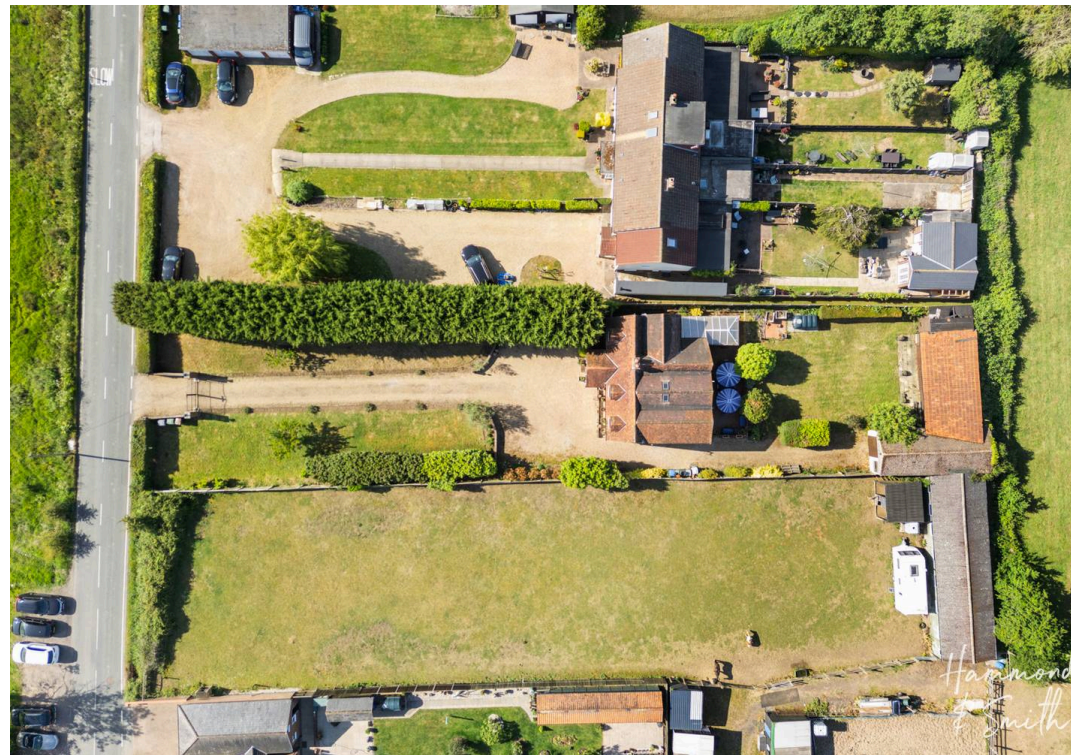
Bedroom / Study

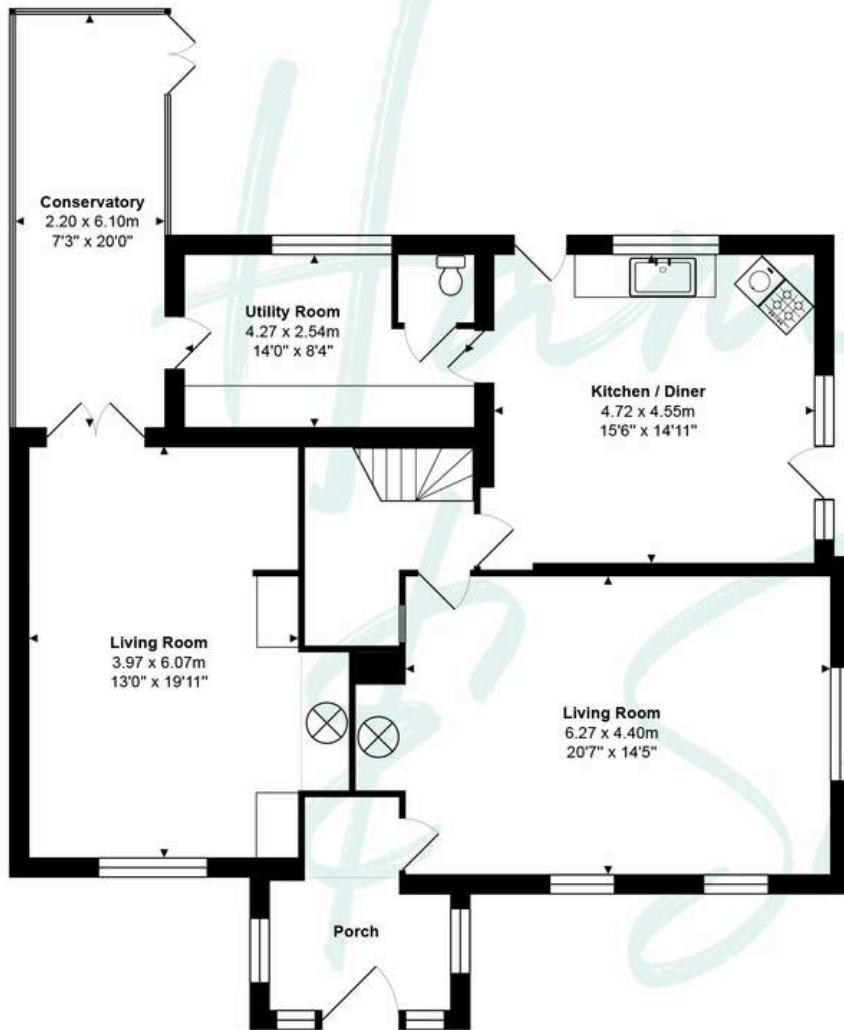
9' 9" x 6' 1" (2.96m x 1.85m)

Bathroom

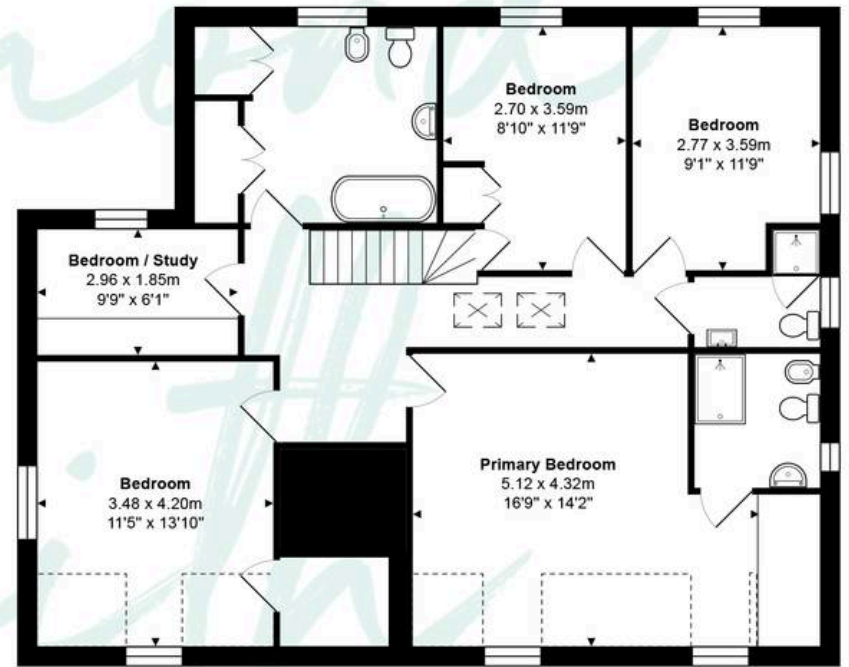
Shower Room







Ground Floor



First Floor

Total Area: approx. 218.1 m² ... 2348 ft²

THE FLOORPLAN IS FOR ILLUSTRATIVE PURPOSES ONLY AND IS NOT TO SCALE.
Measurements and features are approximate and may differ from the actual property. Verify all details independently; no liability is accepted for errors or omissions.

Property marketing provided by www.fotomarketing.co.uk