



Charles Court Feltham Road
Ashford

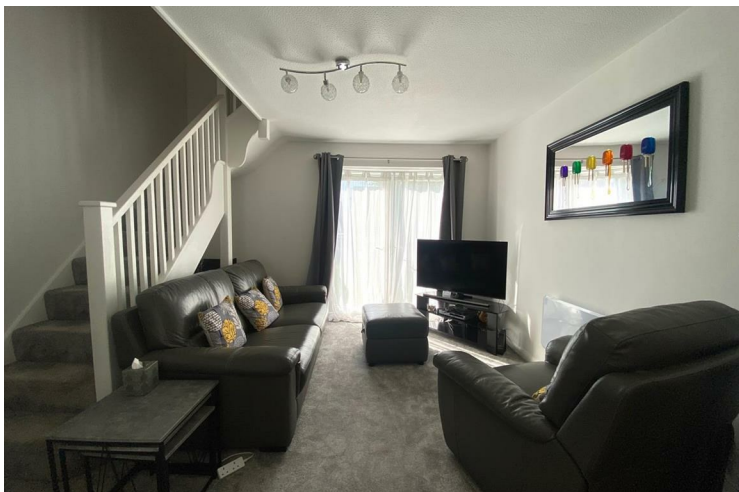
£249,950

Leasehold

NO ONWARD CHAIN

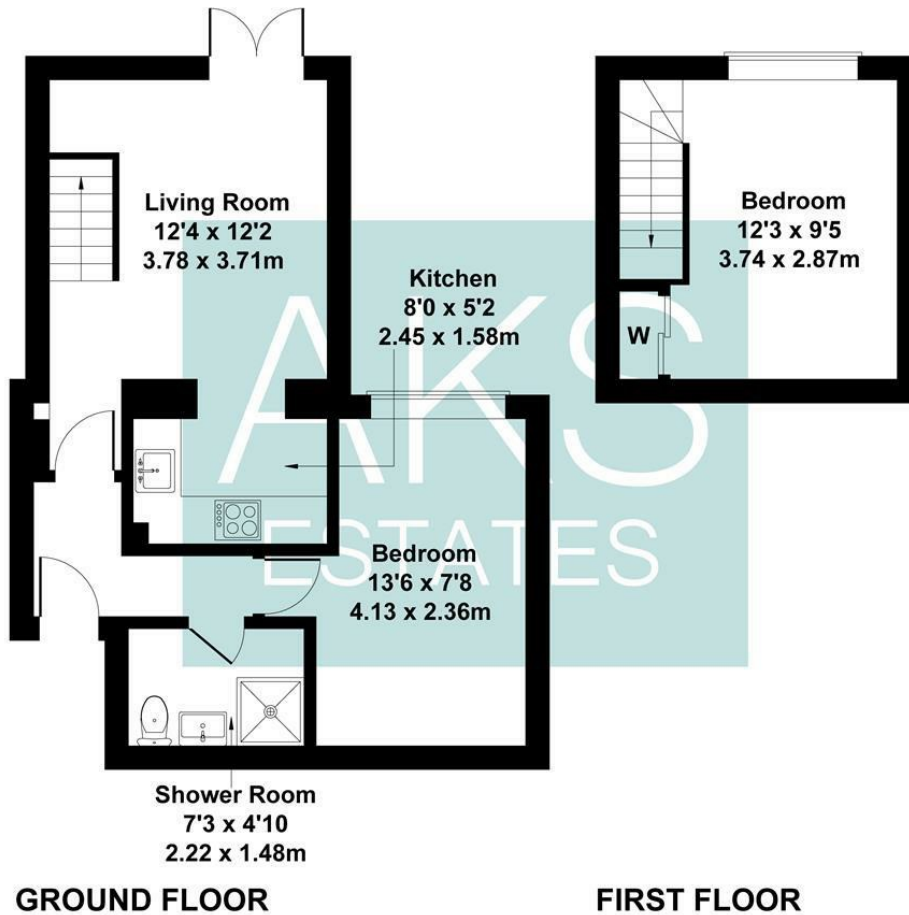
This delightful two bedroom split level flat offers a perfect blend of comfort and convenience, purpose built the flat has been well maintained in good condition, ensuring a pleasant living environment. The spacious reception room provides an inviting space, while the two bedrooms are thoughtfully designed, featuring fitted wardrobes that offer ample storage solutions.

The flat also benefits from allocated parking, a valuable asset in this bustling area, making it easy for residents and guests alike. With its practical layout and modern amenities, this property is an excellent opportunity for those looking to step onto the property ladder seeking a welcoming home.



Charles Court, Ashford

Approximate Gross Internal Area
560 sq ft - 52 sq m



Not to Scale. Produced by The Plan Portal 2025
For Illustrative Purposes Only.



Energy Efficiency Rating		
	Current	Potential
Very energy efficient - lower running costs		
(92 plus) A		
(81-91) B		
(69-80) C		
(55-68) D		
(39-54) E	45	
(21-38) F		
(1-20) G		
Not energy efficient - higher running costs		
England & Wales	EU Directive 2002/91/EC	

Agents Note: Whilst every care has been taken to prepare these particulars, they are for guidance purposes only. All measurements are approximate and are for general guidance purposes only and whilst every care has been taken to ensure their accuracy, they should not be relied upon and potential buyers/tenants are advised to recheck the measurements

Heston
131A Heston Road
Hounslow
TW5 0RF

020 8059 0595
shiv@aksestates.co.uk
aksestates.co.uk

