



4 Montgomery Terrace

Hove BN3 5AX

Offers Over £550,000
Freehold

- POETS CORNER
- THREE BEDROOMS
- BATHROOM
- KITCHEN
- CONSERVATORY
- LIVING/DINING ROOM
- PATIO GARDEN
- NO ONWARD CHAIN

Whitlock and Heaps bring to market this modern Victorian style house situated in the favoured Poets Corner district of Hove. The house offers three-bedroom accommodation presented in excellent decorative order with new carpets to the first floor. To the ground floor is a south facing through living/dining room and kitchen opening onto the conservatory and patio garden. Being neutrally decorated throughout and sold with no onward chain. Situated in the favourable Poets Corner district of Hove being within a short walk of Hove seafront and mainline station. Local independent shops, eateries and cafes are all within a short walk.

ENTRANCE HALL

KITCHEN Incorporating stainless steel sink unit with drainer and mixer tap, adjacent laminate work surface with cupboards and drawers under, matching eye level wall cupboards, inset four ring gas hob, eye level oven, appliance space, tiled splashback, opening to:

SUN ROOM Door to garden.

LIVING/DINING ROOM Sash bay window, two radiators, door to garden.

FIRST FLOOR

LANDING Hatch to loft space.

BEDROOM 1 Sash bay window, radiator.

BEDROOM 2 UPVC double glazed window, radiator.

BEDROOM 3 UPVC double glazed window, radiator.

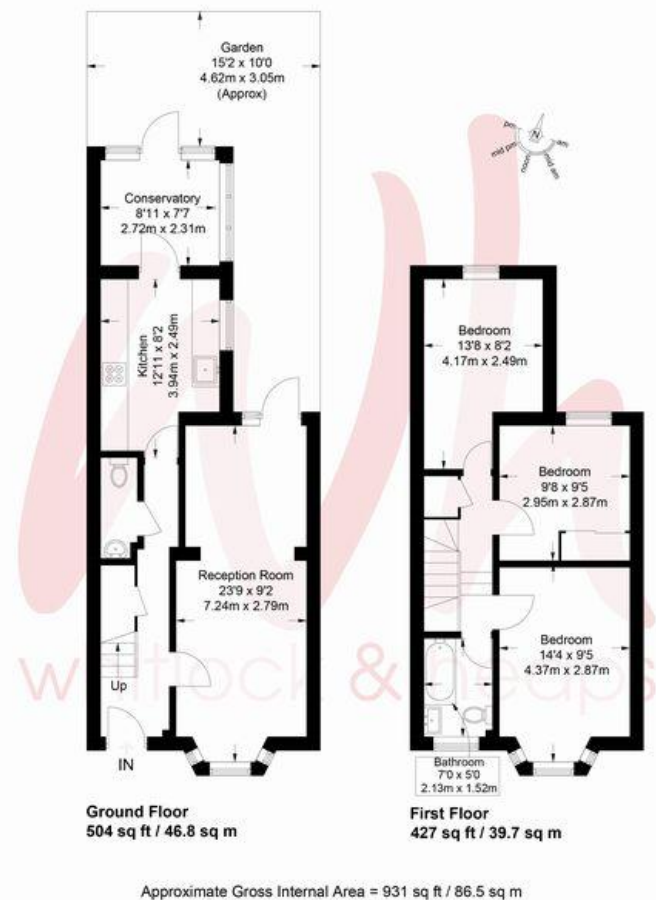
BATHROOM White suite comprising panelled bath with shower over, glazed shower screen, wash hand basin with drawer under, low level w.c, part tiled walls, tiled floor, heated ladder style towel rail, sash window.

OUTSIDE

REAR PATIO GARDEN

Council Tax Band D (taken from www.brighton-hove.gov.uk/council-tax).

We advise that you check this information, we will not be held responsible if the council tax band differs when occupying the property.



Score	Energy rating	Current	Potential
92+	A		
81-91	B		87 B
69-80	C	75 C	
55-68	D		
39-54	E		
21-38	F		
1-20	G		

65 Sackville Road, Hove BN3 3WE
sales@whitlockandheaps.co.uk
 01273 778577



Disclaimer: Whitlock & Heaps have produced these particulars in good faith and they are set out as a general guide. Accuracy is not guaranteed, nor do they form part of any contract. If there is any particular aspect of these details which you require any confirmation, please do contact us, especially if contemplating a long journey. All measurements are approximate. Fixtures and fittings, other than those mentioned above, to be agreed with the seller. Any services, systems or appliances at the property have not been tested.