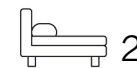




Living  
made  
better

Defoe House  
London City Island, E14 0TX



Asking Price £600,000

# Defoe House, London City Island, E14 0TX

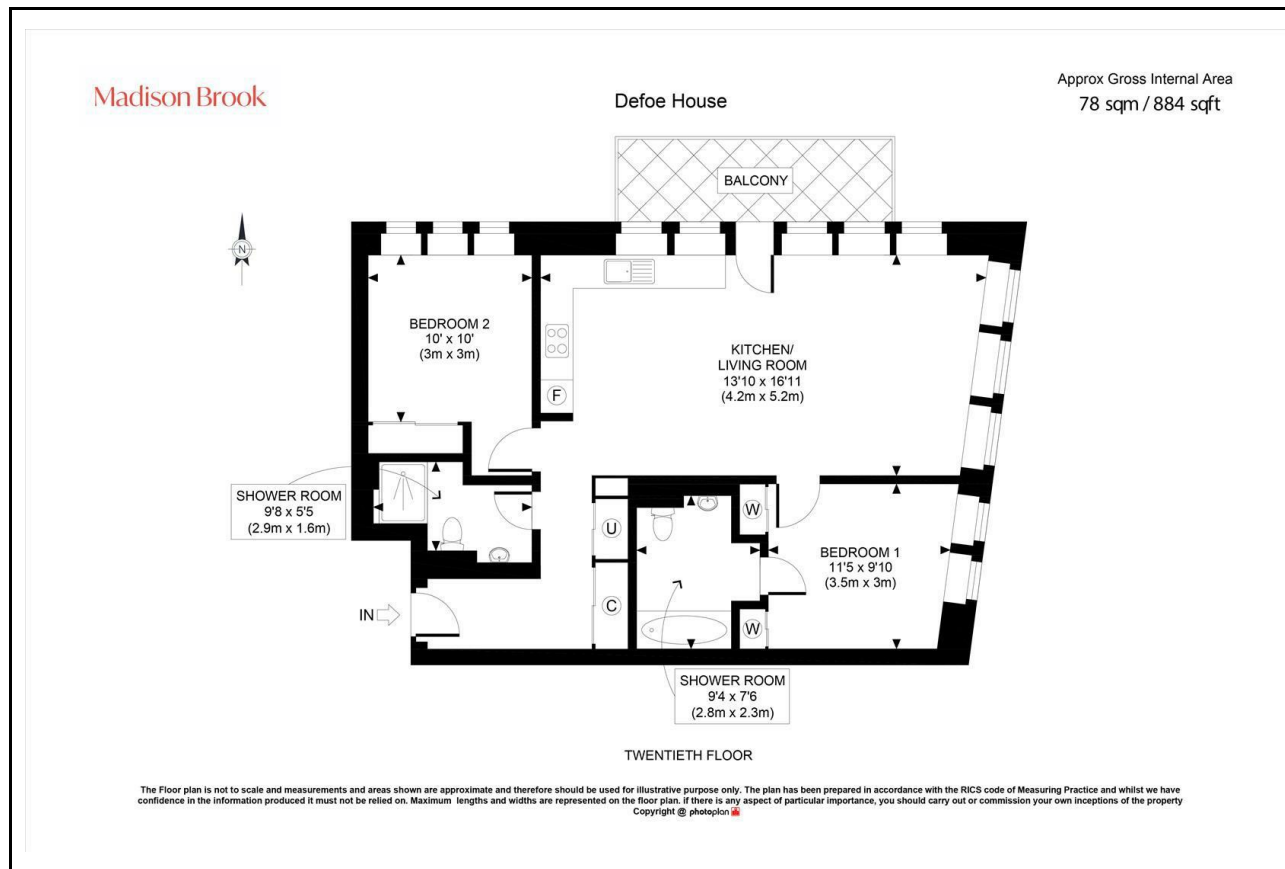
Madison Brook

## Property Summary

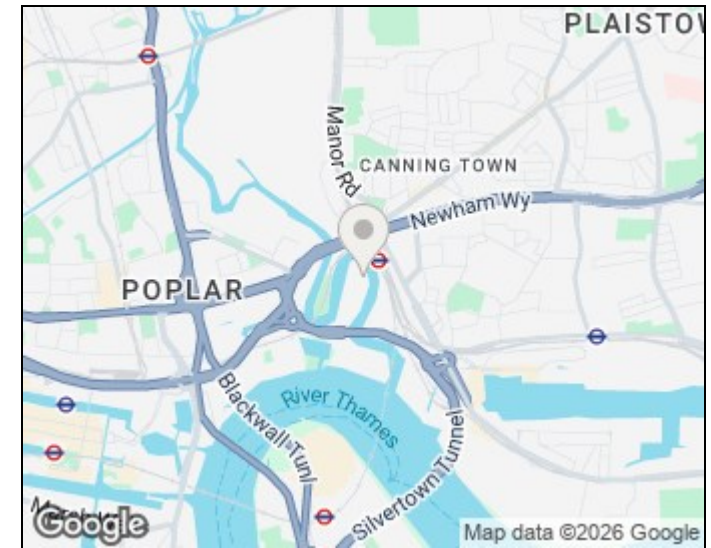
Set on the 20th floor of Defoe House in the sought-after London City Island development, this well-presented two-bedroom, two-bathroom apartment spans 884 sq. ft. and includes a private balcony and high-spec finishes throughout. The open-plan kitchen/living area is fitted with Bosch appliances and opens onto the balcony. Both bedrooms are generous doubles, with the principal bedroom benefiting from a sleek en-suite and built-in wardrobes. A second modern shower room and ample storage complete the layout.

Ideally located close to Canning Town Station (DLR & Jubilee Line), the apartment offers fast links to Canary Wharf, the City, and beyond.

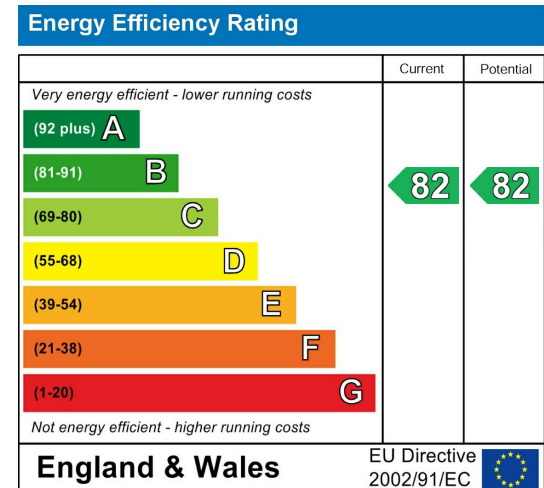
## Floorplan



## Area Map



## Energy Efficiency Graph



Unit B 20 Western Gateway, Royal Victoria  
Dock, London, E16 1BS  
Tel: 020 3946 6000 Email:  
docklands@madisonbrook.com  
<https://madisonbrook.com/>

These particulars, whilst believed to be accurate are set out as a general outline only for guidance and do not constitute any part of an offer or contract. Intending purchasers should not rely on them as statements of representation of fact, but must satisfy themselves by inspection or otherwise as to their accuracy. No person in this firm's employment has the authority to make or give any representation or warranty in respect of the property.