



# Darwin Court

Gloucester Avenue, NW1

£4,300 per month  
(£992.31 per week)

A fantastic two-bedroom apartment extending to approximately 1,230 sq ft, situated on the first floor of a sought-after purpose-built development on the cusp of Primrose Hill.

**CHESTERTONS**



# Darwin Court

## Gloucester Avenue, NW1

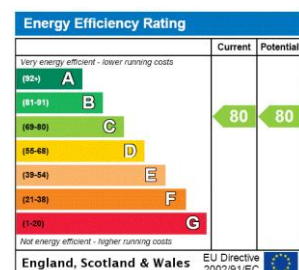
- Larger than average two-bedroom apartment (approx. 1,230 sq ft)
- First floor purpose-built development with lift and portorage
- Bright dual-aspect reception room with open-plan kitchen
- Two double bedrooms with extensive built-in storage
- Garage plus additional off-street parking space
- Access to communal gardens and close to Primrose Hill and Regent's Park
- Heating & Hot Water Included



A fantastic two-bedroom apartment extending to approximately 1,230 sq ft, situated on the first floor of a sought-after purpose-built development on the cusp of Primrose Hill.

Beautifully presented throughout, the property offers a spacious dual-aspect reception room filled with natural light, complemented by a stylish open-plan kitchen with integrated appliances. There are two generous double bedrooms with extensive built-in storage, a modern family bathroom and a separate recently refurbished shower room. Solid wood flooring runs throughout, enhancing the contemporary finish of this impressive home.

**Minimum Term:** 6 months  
**Deposit Required:** £4,961.54  
**Local Authority:** Camden  
**Council Tax Band:**  
**EPC Rating:** C  
**Part Furnished, Unfurnished**




### Chestertons Camden & Primrose Hill Lettings

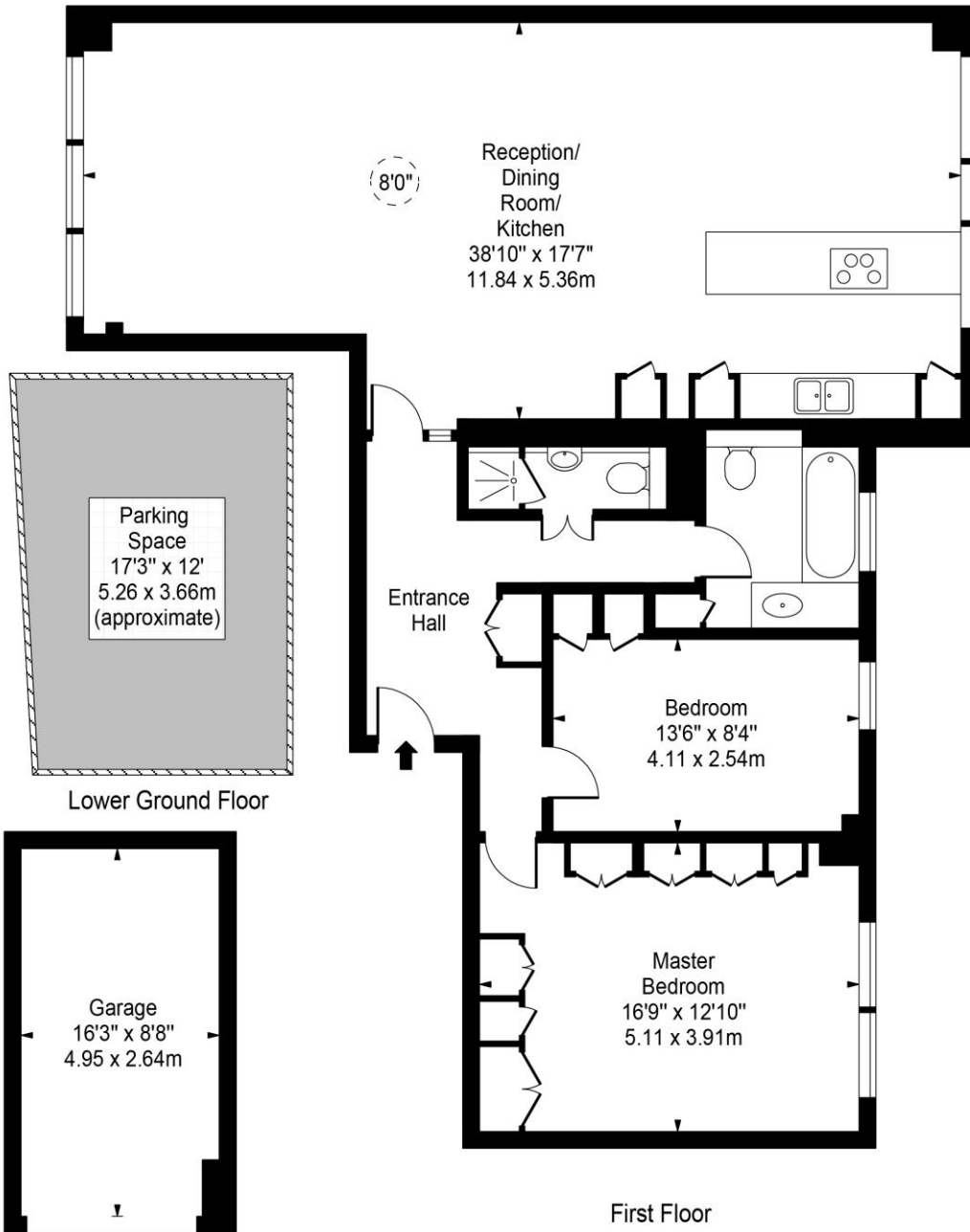
99-101 Parkway  
 London  
 NW1 7PP  
 camdentownlettingsusers@chestertons.co.uk  
 02072673574  
 chestertons.co.uk

Additional tenant charges apply (fees apply to non-AST tenancies only)  
 Tenancy Agreement Fee: £300  
 References per Tenant/Guarantor: £60  
 Inventory check (approx. £100 – £250 inc. VAT)  
 chestertons.co.uk/property-to-rent/applicable-fees

# Darwin Court, Gloucester Avenue



 - Ceiling Height



Gross Internal Area - 1230 Sq Ft - 114.27 Sq M

**Approx Gross Internal Area 1230 Sq Ft - 114.27 Sq M**

For Illustration Purposes Only - Not To Scale

