

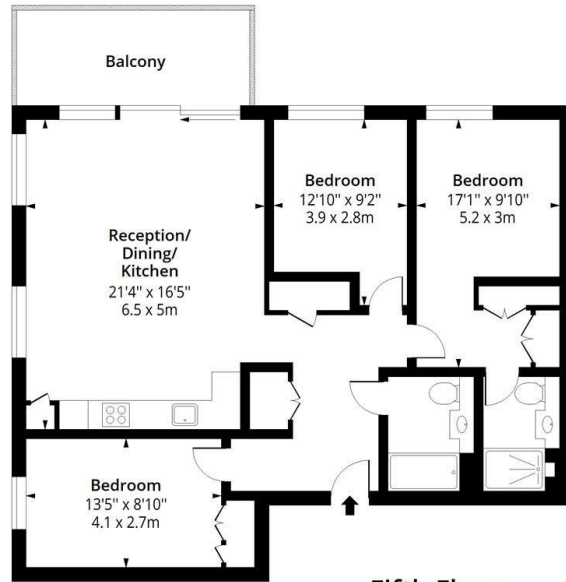


47, Waterview House 12 Quay Walk, Grand Union, Wembley, £3,000 Per month

- Three bedrooms
- 24h concierge
- Balcony
- Residents gym

Water View House, HA0

Approx. Gross Internal Area 1023 Sq Ft - 95.04 Sq M



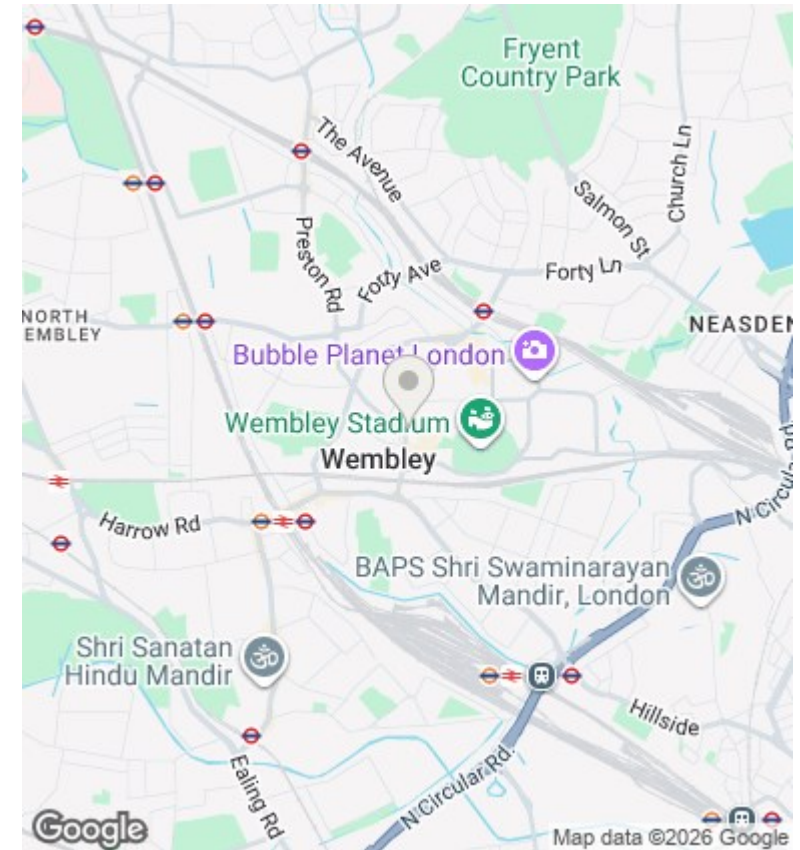
Fifth Floor
Floor Area 1023 Sq Ft - 95.04 Sq M



Measured according to RICS IPMS2. Floor plan is for illustrative purposes only and is not to scale. Every attempt has been made to ensure the accuracy of the floor plan shown, however all measurements, fixtures, fittings and data shown are an approximate interpretation for illustrative purposes only. 1 sq m = 10.76 sq feet.

lpaplus.com

Date: 3/7/2025



Directions

Viewings

Viewings by arrangement only. Call 0208 075 4927 to make an appointment.

Council Tax Band

E

EPC Rating:

Energy Efficiency Rating		
	Current	Potential
<i>Very energy efficient - lower running costs</i>		
(92 plus) A		
(81-91) B		
(69-80) C		
(55-68) D		
(39-54) E		
(21-38) F		
(1-20) G		
<i>Not energy efficient - higher running costs</i>		
England & Wales	EU Directive 2002/91/EC	