



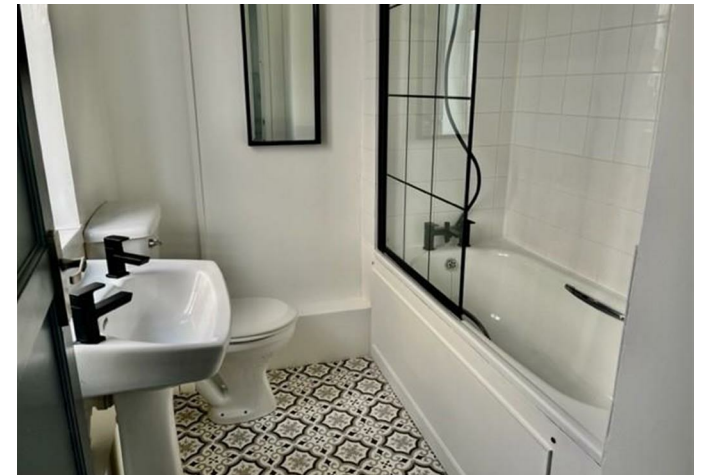
📍 60a Eastleigh Road, Devizes, Wiltshire, SN10 3EH

🔗 £775 Per Calendar Month

- Ground Floor Apartment
- One Double Bedroom
- Garden & Brick Stores
- Available Early July
- Unfurnished



🏠 EPC Rating C



Recently refreshed ground floor bedsit with a lovely garden, within easy walking distance of local amenities and Devizes town centre. Living accommodation comprises entrance hall, kitchen/dining room with electric cooker, bathroom with shower and bath, sitting room/bedroom combined. Externally, there is a garden to the front and enclosed garden to the rear, with two useful brick stores. Available now, u/f, £775pcm

Eastleigh Road, Devizes, SN10

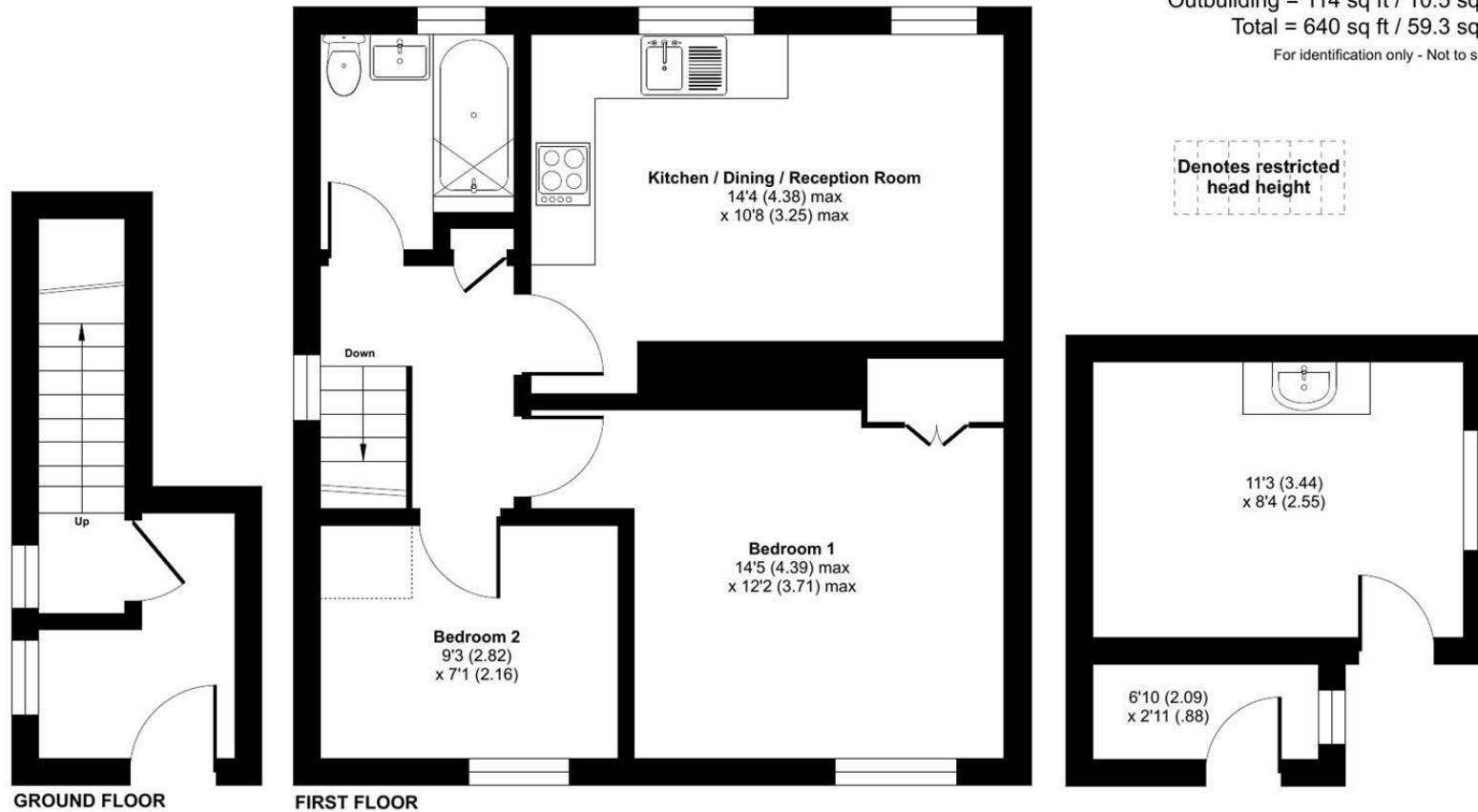
Approximate Area = 520 sq ft / 48.3 sq m

Limited Use Area(s) = 6 sq ft / 0.5 sq m

Outbuilding = 114 sq ft / 10.5 sq m

Total = 640 sq ft / 59.3 sq m

For identification only - Not to scale



 Floor plan produced in accordance with RICS Property Measurement 2nd Edition, Incorporating International Property Measurement Standards (IPMS2 Residential). © ntechcom 2025. Produced for Strakers. REF: 1270410

Disclaimer These particulars, whilst believed to be accurate are set out as a general outline only for guidance and do not constitute any part of an offer or contract. Intending purchasers should not rely on them as statements of representation of fact, but must satisfy themselves by inspection or otherwise as to their accuracy. No person in this firm's employment has the authority to make or give any representation or warranty in respect of the property. All measurements and distances are approximate only. Your home is at risk if you do not keep up repayments on a mortgage or other loan secured on it.