



Greenfields Close, Petersfield

£1,400 Per Month



Williams of Petersfield

INDEPENDENT ESTATE AGENTS

Greenfields Close, Petersfield

Williams of Petersfield are delighted to offer for let this charming two bedroom cottage in the popular village of Nyewood. This rural property is perfect for country walks and living. Within a short drive from the village of Rogate and the town of Petersfield.

The accommodation comprises of a lounge, with the added benefit of a wood burner. The kitchen is well equipped with built in appliances and butler sink. The back lobby leads to the bathroom, which has a roll top bath with shower over the bath. On the first floor there are two double bedrooms.

The outside space offers a large front garden and enclosed rear garden, and off road parking.

Available 27th of August 2026
Council Tax - Band C
EPC - Band D



Energy Efficiency Rating

	Current	Potential
<i>Very energy efficient - lower running costs</i>		
(92 plus) A		
(81-91) B		81
(69-80) C		
(55-68) D	57	
(39-54) E		
(21-38) F		
(1-20) G		
<i>Not energy efficient - higher running costs</i>		

England & Wales

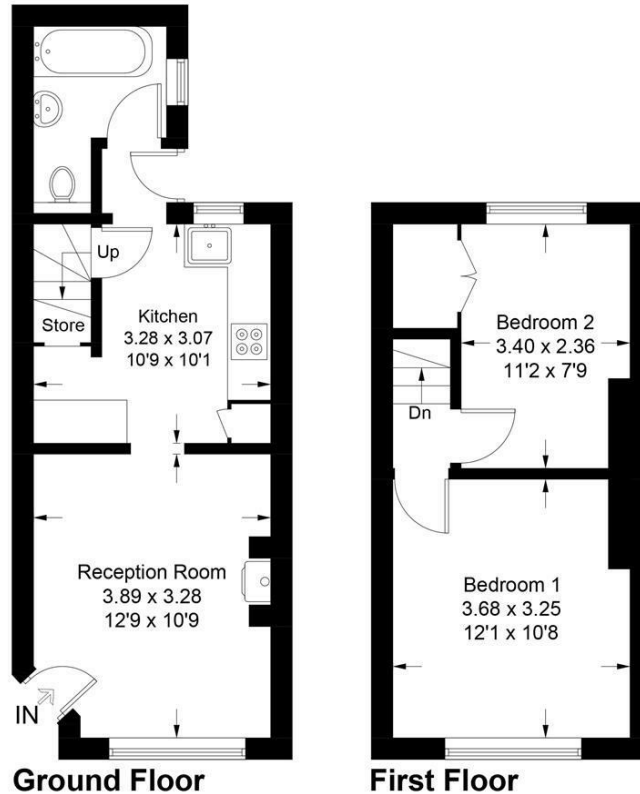
EU Directive
2002/91/EC



IMPORTANT NOTICE: Williams of Petersfield and its clients give notice that: they have no authority to make or give any representations or warranties in relation to the property. These particulars do not form any part of any offer or contract and must not be relied upon as statements or representations of fact. Any areas, measurements or distances are approximate. The text, photographs and plans are for guidance only and are not necessarily comprehensive. It should not be assumed that the property has all necessary planning, Building Regulation or other consents and Williams of Petersfield have not tested any services, equipment or facilities. Purchasers must satisfy themselves by inspection or otherwise.

Greenfields Close, GU31 5JQ

Approximate Gross Internal Area = 52.1 sq m / 561 sq ft



These plans are for representation purposes only as defined by RICS - Code of Measuring Practice. Not to Scale.
Produced for Williams of Petersfield. (ID1165187)

Williams of Petersfield

6 - 8 College Street, Petersfield, Hampshire, GU31 4AD

01730 233333 sales@williamsopetersfield.co.uk www.williamsopetersfield.co.uk

The Property Misdescriptions Act 1991: The Agent has not tested any apparatus, equipment, fixtures and fittings or services and so cannot verify that they are in working order or fit for the purpose. A buyer is advised to obtain verification from their solicitor or surveyor. References to the tenure of a property are based upon information supplied by the seller. The agent has not had sight of the title documents. A buyer is advised to obtain verification from their solicitor. Items shown in photographs are NOT included unless specifically mentioned within the sales particulars. They may however be available by separate negotiation. Buyers must check the availability of any property and make an appointment to view before embarking on any journey to see a property.