



GARRATT TERRACE, SW17

£2,850 per month

Immaculately Presented
Private Garden
Two Bedrooms
Two Bathrooms
978 Sq. Ft
EPC - C

@marshandparsons
marshandparsons.co.uk

MARSH &
PARSONS



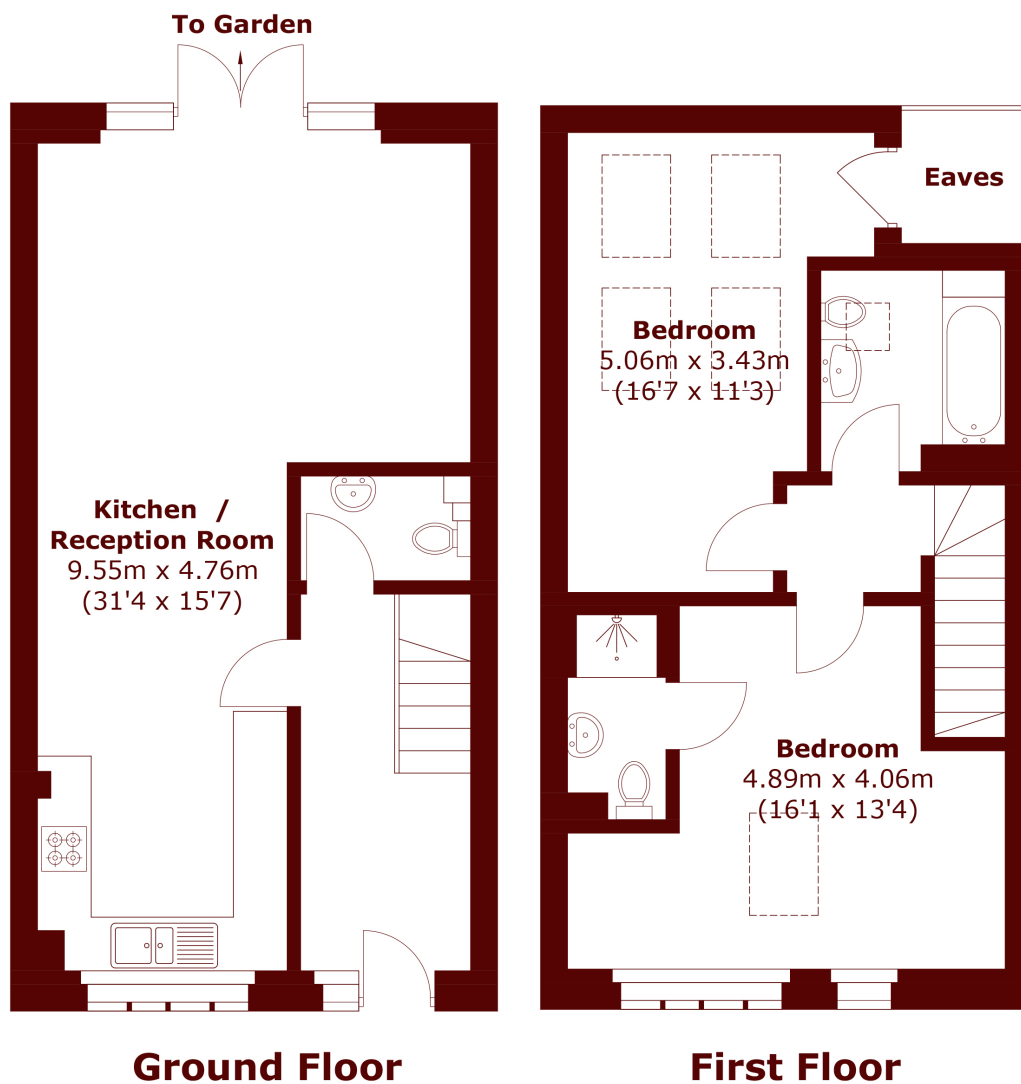
ABOUT THE PROPERTY

This stunning house is immaculately presented throughout. The house briefly comprises; entrance hallway with downstairs WC, open-plan kitchen/living room with double doors opening out on to the garden. The first floor further benefits from a master bedroom with an en suite shower room, and second double bedroom with a separate family bathroom.

Garratt Terrace is ideally located on a quiet residential street, moments from a fantastic range of shops, pubs and restaurants, as well as being situated within walking distance of Tooting Broadway (Northern line, Zone 3), and a good selection of buses heading to the City.



STEP INSIDE GARRATT TERRACE



Total area (approx.): 90.9 sq. m (978.4 sq. ft)
(Excluding Eaves)

Tooting
020 8772 9210

Energy Rating: C We aim to make our particulars both accurate and reliable. However, they are not guaranteed; nor do they form part of an offer or contract. If you require clarification on any points then please contact us, especially if you're traveling some distance to view. Please note that appliances and heating systems have not been tested and therefore no warranties can be given as to their good working order

**MARSH &
PARSONS**