



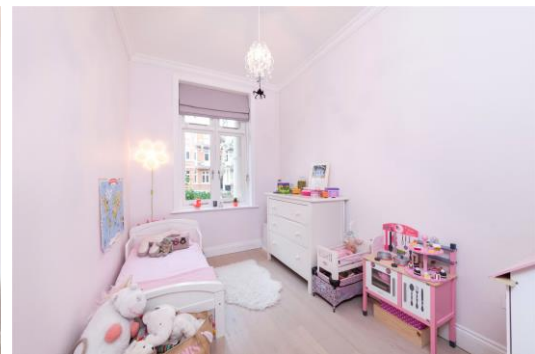
Lauderdale Mansions

Lauderdale Road, W9

£725 per week
(£3,141.67 pcm)

An exceptional three bedroom flat on the raised ground floor of this beautiful mansion block, in the heart of Maida Vale. Finished to the highest standards throughout with excellent entertaining space & access to the lovely communal gardens.

CHESTERTONS



Lauderdale Mansions

Lauderdale Road, W9

- Fantastic Mansion Block
- Spacious Reception With Underfloor Heating & Contemporary Kitchen
- Three Double Bedrooms & Two Modern Bathrooms
- Moments To Warwick Avenue Station
- EPC Rating D



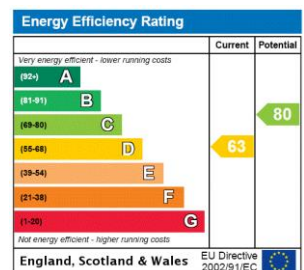
An exceptional three bedroom flat on the raised ground floor of this beautiful mansion block, in the heart of Maida Vale.

Finished to the highest standards throughout with excellent entertaining space & access to the lovely communal gardens, this property comprises of: Reception leading to contemporary integrated kitchen, large master bedroom with stylish en-suite, two further double bedrooms & family bathroom.

The property has underfloor heating throughout, high ceilings and an abundance of natural light throughout. Lauderdale Mansions is moments to Warwick Avenue underground & Lauderdale Parade

Tenure: To be advised
Unfurnished

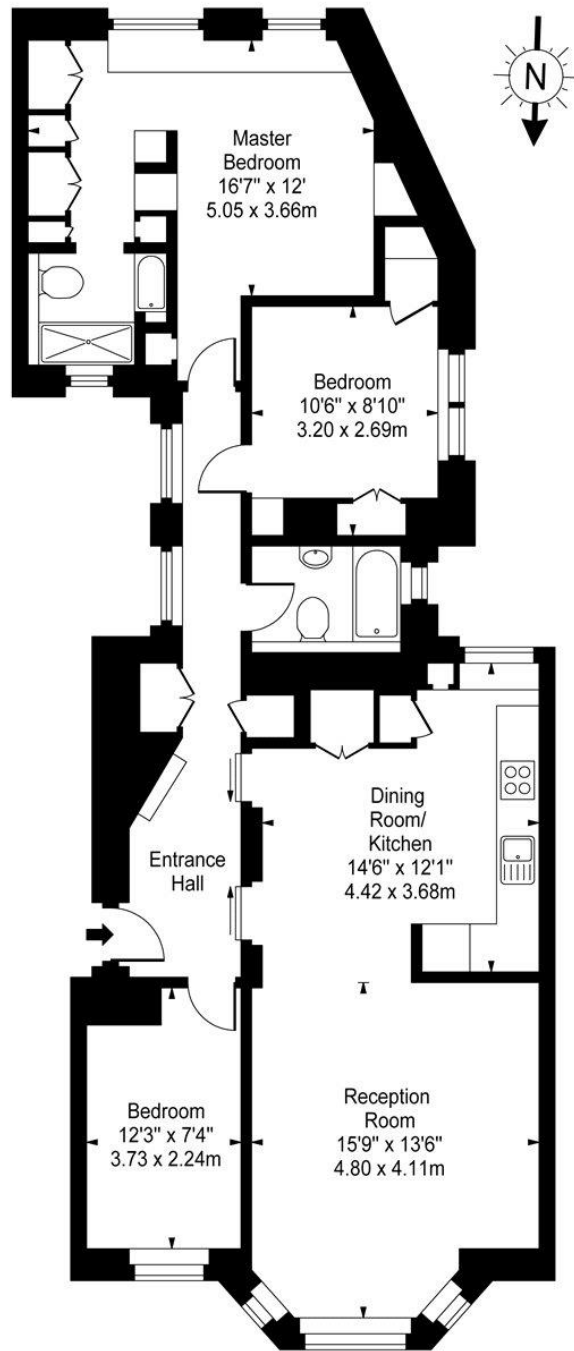
Additional tenant charges apply (fees apply to non-AST tenancies only)
 Tenancy Agreement Fee: £300
 References per Tenant/Guarantor: £60
 Inventory check (approx. £100 – £250 inc. VAT)
[chestertons.com/property-to-rent/applicable-fees](https://www.chestertons.com/property-to-rent/applicable-fees)



Chestertons Little Venice Lettings

26 Clifton Road
 Maida Vale
 London
 W9 1SX
lettings.littlevenice@chestertons.com
 02072662369
[chestertons.com](https://www.chestertons.com)

Lauderdale Mansions, W9



Raised Ground Floor

Approx Gross Internal Area **1005 Sq Ft - 93.36 Sq M**

For Illustration Purposes Only - Not To Scale
www.goldlens.co.uk
Ref. No. 002488

