



Flat 8, Tabard House, 22 Upper Teddington Road

Kingston Upon Thames

£230,000

Flat 8

Tabard House, Kingston Upon Thames

Council Tax band: B

Tenure: Leasehold

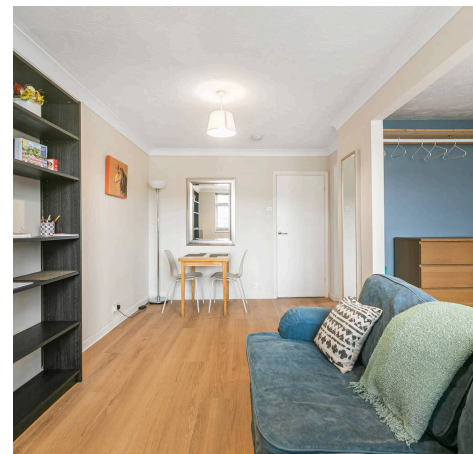
EPC Energy Efficiency Rating: D

EPC Environmental Impact Rating: D

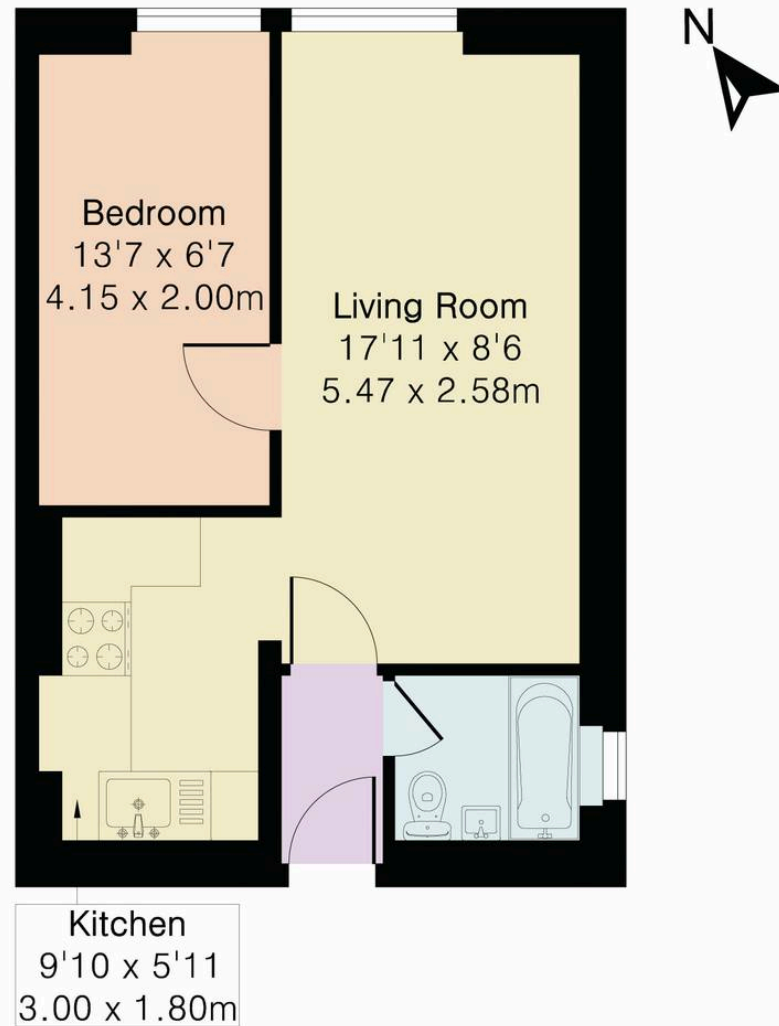
- NEWLY RENOVATED
- Brand new flooring
- Newly decorated
- Residents parking
- Modern studio
- Heart of Hampton Wick
- Moments to train station for convenient access to London Waterloo
- 5min walk to Kingston town centre & vibrant riverside
- Bushy Park closeby



HARRISON
JACKS



Approximate Gross Internal Area 363 sq ft - 34 sq m



First Floor



Floor plan produced in accordance with RICS Property Measurement 2nd Edition. Although Pink Plan Ltd ensures the highest level of accuracy, measurements of doors, windows and rooms are approximate and no responsibility is taken for error, omission or misstatement. These plans are for representation purposes only and no guarantee is given on the total square footage of the property within this plan. The figure icon is for initial guidance only and should not be relied on as a basis of valuation.

