



Steventon Road, W12

£1,350,000

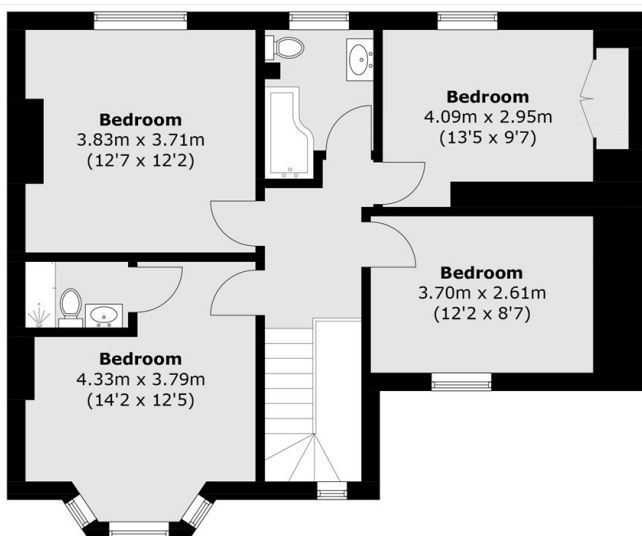
A five bedroom home offered with planning permission to extend, offers plenty of period features combined with a contemporary feel and access to an above average size large private garden, perfect for that summer barbecue. The property also benefits from a private garage and private gated driveway.

Steventon Road is a quiet road just off Uxbridge Road that provides convenient access to Shepherds Bush, Hammersmith and Chiswick.

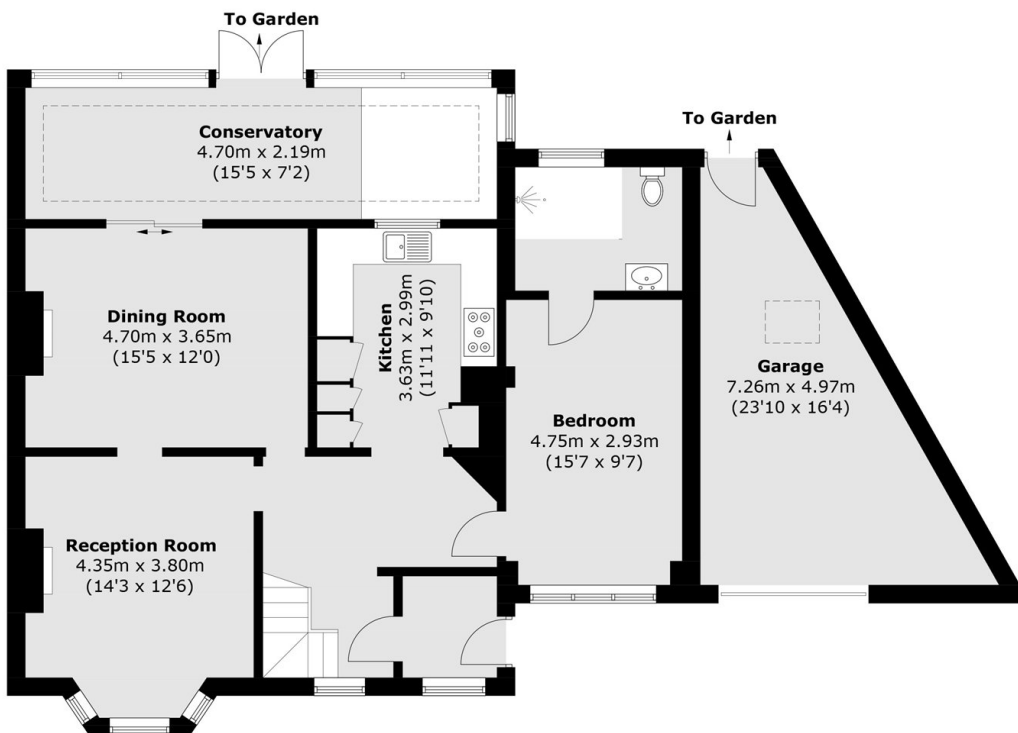
Features

- Off Street Parking
- Planning Permission
- Five Bedrooms
- Three Bathrooms
- Private Garden
- Private Garage

Steventon Road, London, W12



First Floor



Ground Floor

Approx Internal Area: 168.6 sq. m (1,814.8 sq. ft)
(Excluding Eaves)
Garage: 21.0 sq. m (226.0 sq. ft)
Total: 189.6 sq. m (2,040.8 sq. ft)