



**Stoneacre**  
Properties



## **Dragon Close, Leeds, LS14 6WG**

**£230,000**

**\*\*\*OFF STREET PARKING\*\*\*SOUGHT AFTER LOCATION\*\*\*** Offered to the market is this beautifully presented two bedroom semi detached house located on Dragon Close, Leeds. The property is situated in a popular location close to all local amenities including: shops, schools and transport links. The property briefly comprises of: entrance hall way, kitchen/diner, guest w.c, living room, first floor landing, two bedrooms and family bathroom. Externally the property benefits from a large rear garden with grass laid to lawn and a driveway to the side providing off street parking for multiple cars. This stunning property is not one to be missed to make this house your home please contact the office today to arrange your viewing.

## ENTRANCE

Door to the front elevation. Central heating radiator. Stairs leading to first floor landing.

## KITCHEN/DINER



Range of wall and base units. Integrated oven with gas hob and extractor fan above. Integrated fridge/freezer. Sink and drainer. Plumbing for washing machine and space for dishwasher. Space for dining table and chairs. Central heating radiator. Double glazed window to the front elevation.

## GUEST W.C



Low flush w.c. Wash hand basin. Central heating radiator.

## LIVING ROOM



French doors leading to the rear elevation. Central heating radiator.

## FIRST FLOOR LANDING

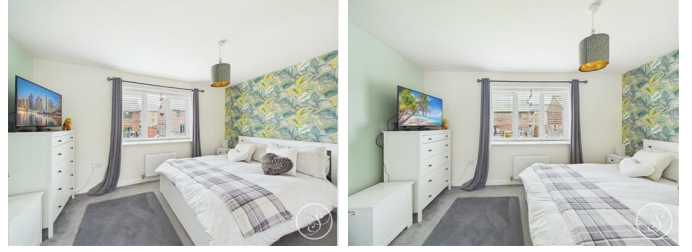
Loft access. Central heating radiator.

## BEDROOM ONE



Double glazed window to the rear elevation. Central heating radiator.

## BEDROOM TWO



Double glazed window to the front elevation. Central heating radiator. Storage cupboard.

## BATHROOM



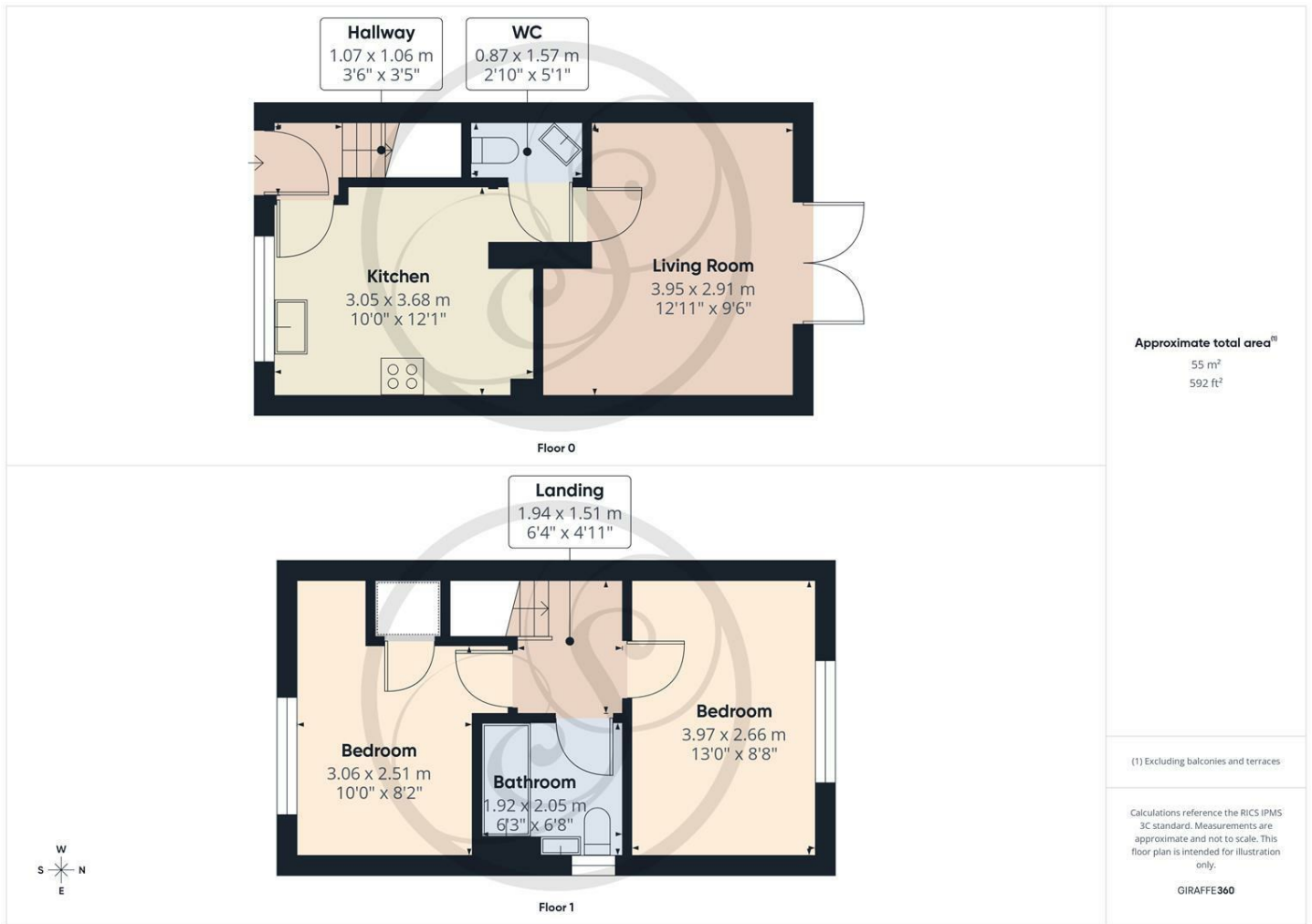
Double glazed frosted window to the side elevation. Low flush w.c. Wash hand basin. Bath with shower above. Central heating radiator.

## EXTERNAL

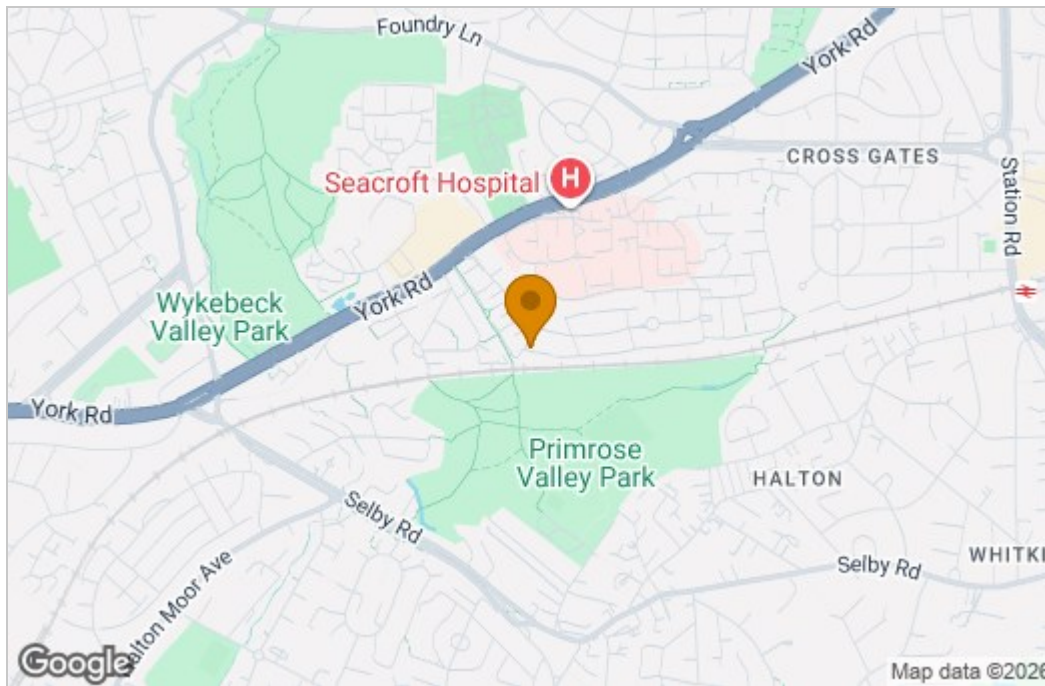


Driveway to the side elevation providing off street parking for multiple cars. Large enclosed rear garden with grass laid to lawn.

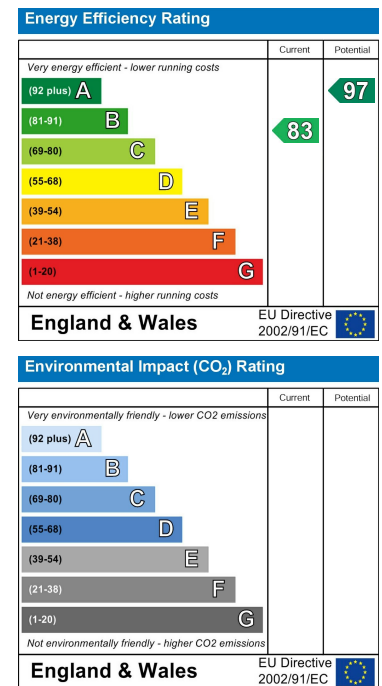
# Floor Plan



# Area Map



# Energy Efficiency Graph



These particulars, whilst believed to be accurate are set out as a general outline only for guidance and do not constitute any part of an offer or contract. Intending purchasers should not rely on them as statements of representation of fact, but must satisfy themselves by inspection or otherwise as to their accuracy. No person in this firm's employment has the authority to make or give any representation or warranty in respect of the property.

